

OPTIONS

Construction:

- carbon steel (s235Jr)
- stainless steel (Aisi 304)

Mounting method:

- to screw

Contribution:

- galvanized sheet insert

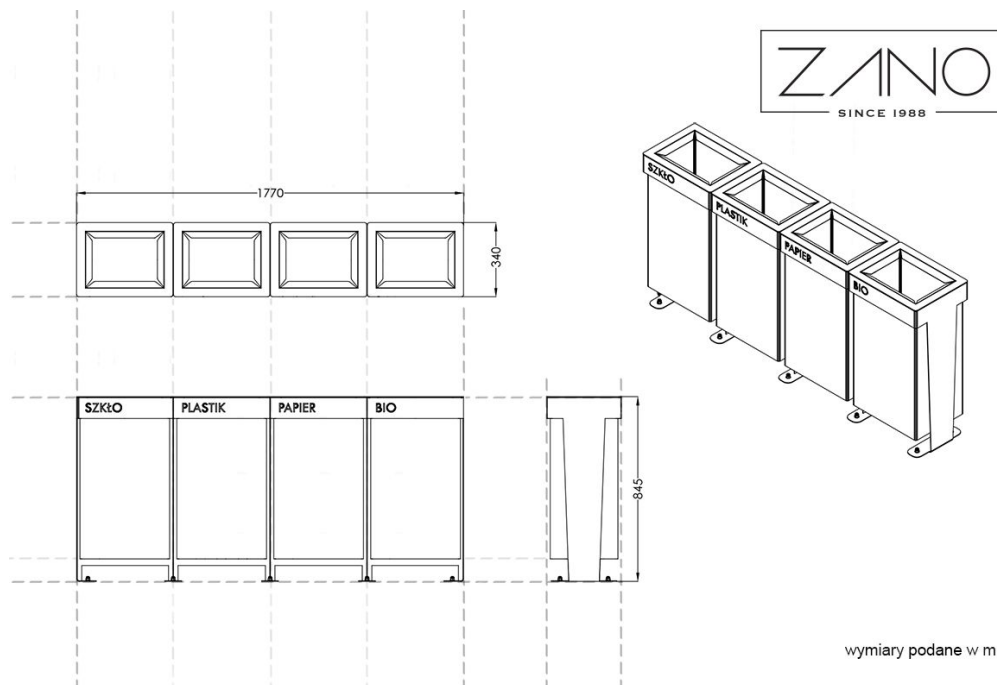
DESCRIPTION

The trash receptacle follows the distinctive styling of the Reliq series, incorporating a modular system that allows for integration of multiple units.

The receptacle is available in two styles: -a model **crafted entirely from stainless steel** -a variant comprising **painted carbon steel framework** paired with **stainless steel containers**

Featuring detachable inserts crafted from galvanized metal, it supports the sorted collection of recyclables, such as glass, plastics, paper, and organic waste. The hinged flaps on the containers make for straightforward disposal. **Each insert can hold 52 liters.**

The Reliq trash receptacle offers a wide range of color options. It is constructed from premium stainless steel or blackened steel. This bin may be installed as a standalone unit or secured to the ground using concrete anchors.



wymiary podane w mm

GENERAL TECHNICAL DATA

Dimensions:

- width: 86 1/2 in
- height: 39 3/4 in
- depth: 17 in

Weight:

- 505 lb

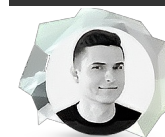
Capacity:

- number of containers: 4 szt.
- capacity of one container: 13 3/4 gal

Materials:

- construction - stainless steel or carbon steel
- container - stainless steel
- insert - galvanized sheet metal

ZANO



Michał Gzela

Product:
Reliq recycling garbage can
Catalog number: **15.013**
Designer: Michał Gzela

In accordance with the Polish Law on Copyright and Related Rights of 04.02.1994 (Official Journal of Laws No. 24, item 83, corrected: Journal of Laws No. 43, item 170) and in accordance with the EU copyright legislation including all EU directives and regulations on copyright, Zano Mirosław Zarotynski Company, reserves the copyright of drawings, descriptions, 3D models, renderings, graphics, content contained in offers, attachments to offers and all other documents. Its content is the intellectual property of ZANO Mirosław Zarotynski company. The use of author's ideas, solutions, copying, distribution of photos, graphics or fragments of graphics, descriptive texts, for profit, without the permission of the author - ZANO Mirosław Zarotynski company - is prohibited and constitutes a copyright infringement and is punishable.

NOTE: The drawings do not reflect the actual dimensions of the foundation. These are only sample installation diagrams taking into account the type of anchoring and the material of the substrate to which to attach the furniture.

The size of the foundation depends on local foundation conditions.



INSTALLATION TO PAVING WITH FOUNDATION

Installation description

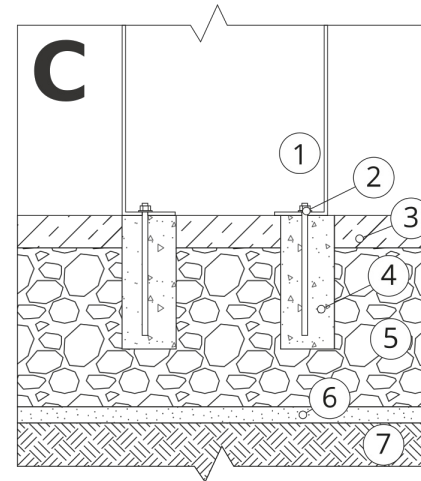
1. ZANO product
2. Quick-attachment / quick-attachment or chemical anchor
3. Stone paving / concrete paving / stone slabs / concrete slabs
4. Sand ballast (approximately 2 - 4 cm)
5. Stone aggregate substructure
6. Concrete foundation of C16/20 class (top surface of concrete 10 cm below paving surface)
7. Local land



MOUNTING TO PAVING

Installation description

1. ZANO product
2. Quick-attachment / quick-attachment or chemical anchor
3. Stone paving / concrete paving / stone slabs / concrete slabs
4. Sand ballast (approximately 2 - 4 cm)
5. Stone aggregate substructure
6. Local land



MOUNTING TO CONCRETE / ASPHALT

Installation description

1. ZANO product
2. Quick-attachment / quick-attachment or chemical anchor
3. Fixed restrained surface, such as concrete or asphalt
4. Concrete foundation of C16/20 class (top surface of concrete 10 cm below paving surface)
5. Stone aggregate substructure
6. Sand ballast (approximately 2 - 4 cm)
7. Local land



MOUNTING TO CONCRETE FOUNDATION

Installation description

1. ZANO product
2. Quick-attachment / quick-attachment or chemical anchor
3. Concrete foundation of C16/20 class (top surface of concrete 10 cm below paving surface)
4. Local land