



OPTIONS

Construction:

- carbon steel (s235Jr)

Mounting method:

- to screw

Ashtray:

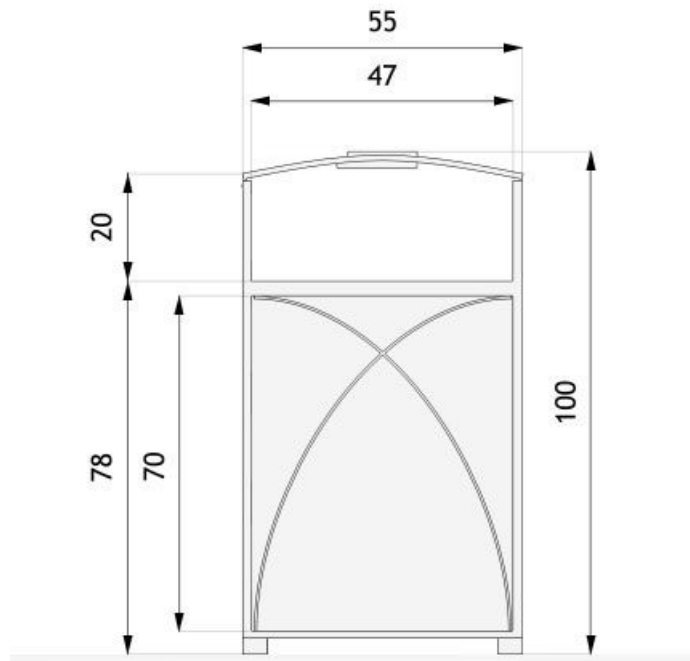
- with an ashtray

Contribution:

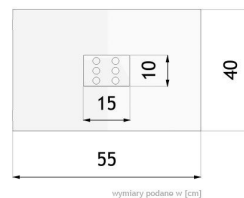
- galvanized sheet insert

DESCRIPTION

The model 03.039 Trashcan Rock exemplifies a vintage-inspired trash receptacle, echoing the appearance of an old-school mailbox. Featuring a sleek black steel exterior and timeless design, this trash can is aesthetically pleasing and fits well in parks, green spaces, streets, and locations dominated by historical city architecture. Despite its traditional look, it boasts several contemporary attributes. It includes a stainless steel ashtray built into the lid, and the top itself is hinged for easy access when changing the liner. The unit is constructed from steel profiles and panels, and the inner liner is made from galvanized steel. The can holds 60 liters yet remains fairly lightweight at 27 kilograms, standing a meter tall and over half a meter wide. It can be installed as a standalone unit or secured using wall anchors.



wymiary podane w [cm]



wymiary podane w [cm]

GENERAL TECHNICAL DATA

Dimensions:

- width: 21 ³/₄ in
- height: 39 ¹/₄ in
- thickness: 15 ³/₄ in

Weight:

- 60 lb

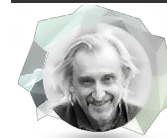
Capacity:

- capacity: 15 ³/₄ gal

Materials:

- galvanized sheet insert
- steel profiles
- stainless steel ashtray
- steel sheets

ZANO

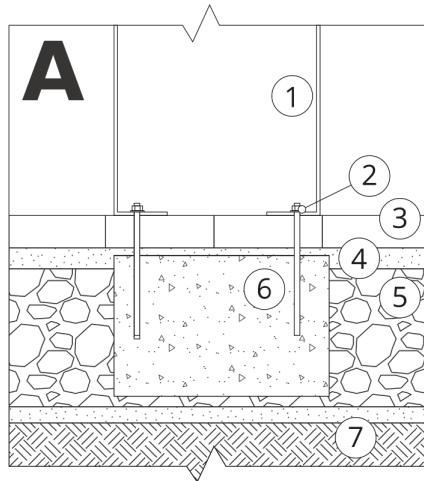


Product:
Basket with ashtray Rock
Catalog number: **03.039**
Designer: Tomasz Szpytma

In accordance with the Polish Law on Copyright and Related Rights of 04.02.1994 (Official Journal of Laws No. 24, item 83, corrected: Journal of Laws No. 43, item 170) and in accordance with the EU copyright legislation including all EU directives and regulations on copyright, Zano Mirosław Zarotynski Company, reserves the copyright of drawings, descriptions, 3D models, renderings, graphics, content contained in offers, attachments to offers and all other documents. Its content is the intellectual property of ZANO Mirosław Zarotynski company. The use of author's ideas, solutions, copying, distribution of photos, graphics or fragments of graphics, descriptive texts, for profit, without the permission of the author - ZANO Mirosław Zarotynski company - is prohibited and constitutes a copyright infringement and is punishable.

NOTE: The drawings do not reflect the actual dimensions of the foundation. These are only sample installation diagrams taking into account the type of anchoring and the material of the substrate to which to attach the furniture.

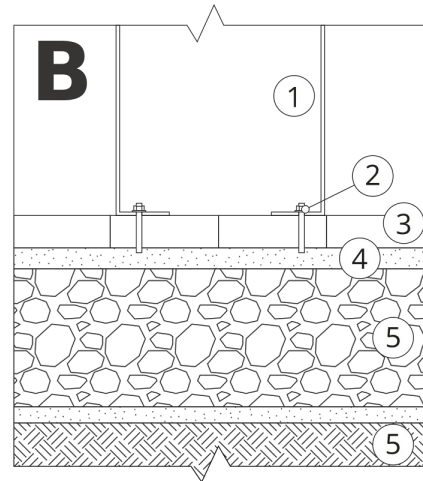
The size of the foundation depends on local foundation conditions.



INSTALLATION TO PAVING WITH FOUNDATION

Installation description

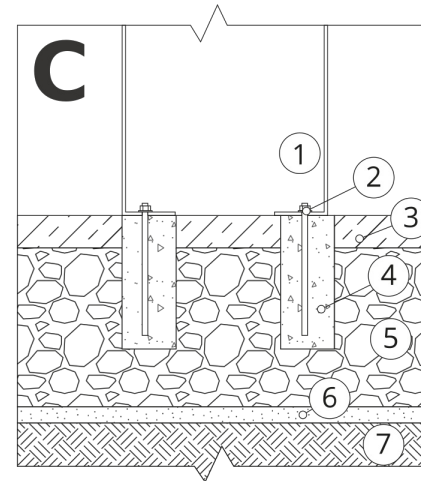
1. ZANO product
2. Quick-attachment / quick-attachment or chemical anchor
3. Stone paving / concrete paving / stone slabs / concrete slabs
4. Sand ballast (approximately 2 - 4 cm)
5. Stone aggregate substructure
6. Concrete foundation of C16/20 class (top surface of concrete 10 cm below paving surface)
7. Local land



MOUNTING TO PAVING

Installation description

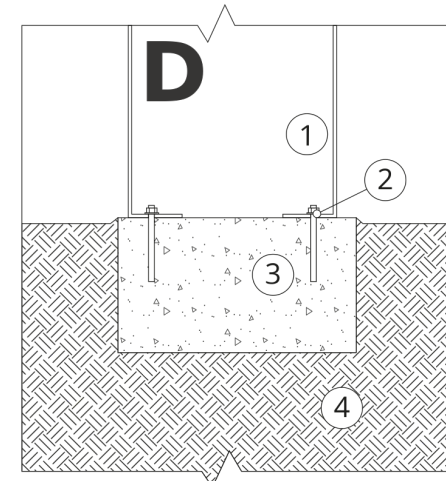
1. ZANO product
2. Quick-attachment / quick-attachment or chemical anchor
3. Stone paving / concrete paving / stone slabs / concrete slabs
4. Sand ballast (approximately 2 - 4 cm)
5. Stone aggregate substructure
6. Local land



MOUNTING TO CONCRETE / ASPHALT

Installation description

1. ZANO product
2. Quick-attachment / quick-attachment or chemical anchor
3. Fixed restrained surface, such as concrete or asphalt
4. Concrete foundation of C16/20 class (top surface of concrete 10 cm below paving surface)
5. Stone aggregate substructure
6. Sand ballast (approximately 2 - 4 cm)
7. Local land



MOUNTING TO CONCRETE FOUNDATION

Installation description

1. ZANO product
2. Quick-attachment / quick-attachment or chemical anchor
3. Concrete foundation of C16/20 class (top surface of concrete 10 cm below paving surface)
4. Local land