



OPTIONS

Construction:

- carbon steel (s235Jr)
- stainless steel (Aisi 304)

Mounting method:

- to screw

Contribution:

- galvanized sheet insert

DESCRIPTION

Model 03.044 is another basket in our series of products that offers attractive prices from the manufacturer. Even though it's priced competitively, this trash receptacle boasts a unique design, cutting-edge design features, high-quality craftsmanship, and meticulous attention to detail.

The Start trash can is constructed from carbon steel and stainless steel. **The body of the container is consistently made from stainless steel, no matter which type of steel is used in the rest of the structure.** The receptacle has a half-cylinder shape mounted on two legs. With its minimalist style, the Start basket seamlessly integrates into the aesthetic of contemporary residential areas, parks, and urban environments.





GENERAL TECHNICAL DATA

Dimensions:

- width: 14 1/2 in
- height: 32 1/4 in
- depth: 11 1/2 in

Weight:

- 66 lb

Capacity:

- capacity: 8 gal

Materials:

- construction - stainless steel or carbon steel
- container - stainless steel
- insert - galvanized sheet metal

ZANO


Filip Babiarz

Product: Garbage can Start
Catalog number: **03.044**
Designer: Filip Babiarz

In accordance with the Polish Law on Copyright and Related Rights of 04.02.1994 (Official Journal of Laws No. 24, item 83, corrected: Journal of Laws No. 43, item 170) and in accordance with the EU copyright legislation including all EU directives and regulations on copyright, Zano Mirosław Zarotynski Company, reserves the copyright of drawings, descriptions, 3D models, renderings, graphics, content contained in offers, attachments to offers and all other documents. Its content is the intellectual property of ZANO Mirosław Zarotynski company. The use of author's ideas, solutions, copying, distribution of photos, graphics or fragments of graphics, descriptive texts, for profit, without the permission of the author - ZANO Mirosław Zarotynski company - is prohibited and constitutes a copyright infringement and is punishable.



NOTE: The drawings do not reflect the actual dimensions of the foundation. These are only sample installation diagrams taking into account the type of anchoring and the material of the substrate to which to attach the furniture.

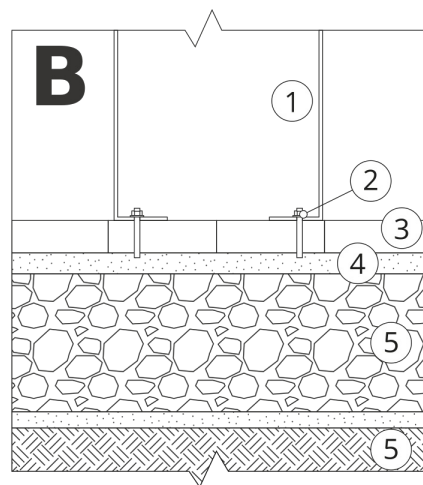
The size of the foundation depends on local foundation conditions.



INSTALLATION TO PAVING WITH FOUNDATION

Installation description

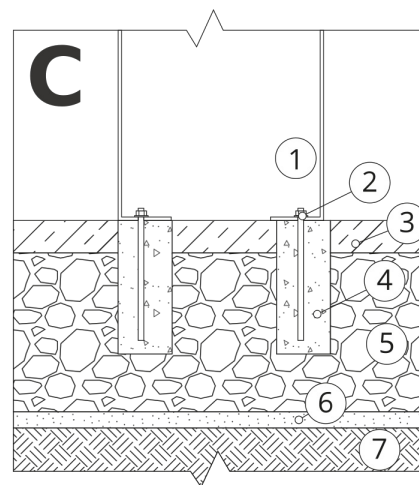
1. ZANO product
2. Quick-attachment / quick-attachment or chemical anchor
3. Stone paving / concrete paving / stone slabs / concrete slabs
4. Sand ballast (approximately 2 - 4 cm)
5. Stone aggregate substructure
6. Concrete foundation of C16/20 class (top surface of concrete 10 cm below paving surface)
7. Local land



MOUNTING TO PAVING

Installation description

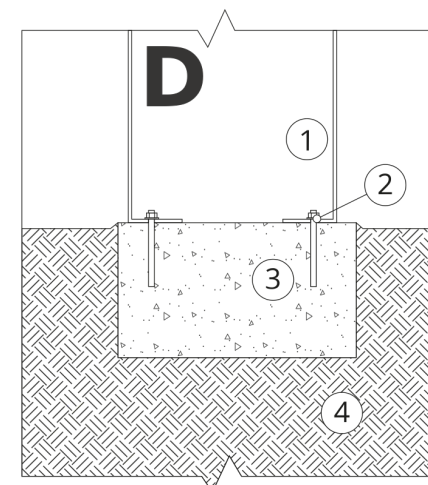
1. ZANO product
2. Quick-attachment / quick-attachment or chemical anchor
3. Stone paving / concrete paving / stone slabs / concrete slabs
4. Sand ballast (approximately 2 - 4 cm)
5. Stone aggregate substructure
6. Local land



MOUNTING TO CONCRETE / ASPHALT

Installation description

1. ZANO product
2. Quick-attachment / quick-attachment or chemical anchor
3. Fixed restrained surface, such as concrete or asphalt
4. Concrete foundation of C16/20 class (top surface of concrete 10 cm below paving surface)
5. Stone aggregate substructure
6. Sand ballast (approximately 2 - 4 cm)
7. Local land



MOUNTING TO CONCRETE FOUNDATION

Installation description

1. ZANO product
2. Quick-attachment / quick-attachment or chemical anchor
3. Concrete foundation of C16/20 class (top surface of concrete 10 cm below paving surface)
4. Local land