



OPTIONS

Construction:

- carbon steel (s235Jr)
- stainless steel (Aisi 304)

Seat and backrest:

- European coniferous wood
- hardwood of European origin
- oiled exotic wood
- premium exotic wood
- eco plank

Mounting method:

- to screw

Music module:

- no
- bluetooth speaker
- speaker with built-in memory

Battery pack:

- Gel 36 Ah
- Lithium 40 Ah

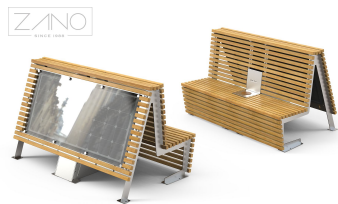
Wi-Fi hotspot:

- no
- 2.4 GHz; 3G, 4G (module does not include SIM card)

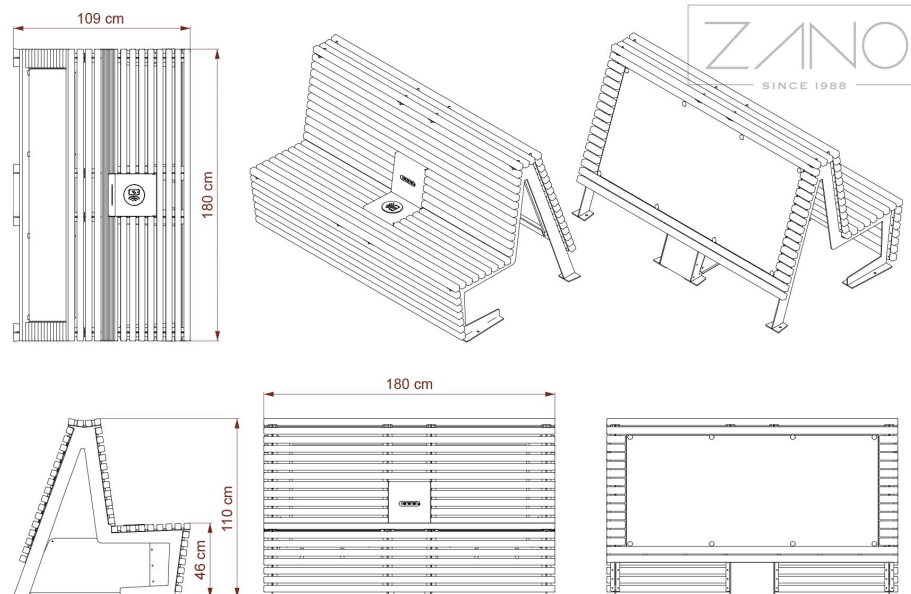
Logo:

- no
- milled in wood

DESCRIPTION



The Flash solar bench is an innovative addition to city landscapes, featuring a **photovoltaic panel** that ensures it operates completely off-grid. This feature eliminates the need for electrical hookups, offering placement flexibility while ensuring dependable functionality. The Flash bench includes three USB A 3.0 ports and a...



GENERAL TECHNICAL DATA

Dimensions:

- width: 70 $\frac{3}{4}$ in
- height: 43 $\frac{1}{4}$ in
- depth: 43 in

Weight:

- European coniferous wood: 441 lb
- hardwood of European origin: 503 lb
- eco plank: 536 lb

Basic equipment:

- inductive charger
- 2 USB A 3.0 quick charge ports and 1 USB C 3.0 Quick Charge port

Electrical specifications:

- max. power of photovoltaic panel: 160 W
- battery capacity: 55 Ah
- working temperature: -20°C - 60°C

Materials:

- European or exotic coniferous wood
- construction - stainless steel or carbon steel, galvanized and powder coated

ZANO



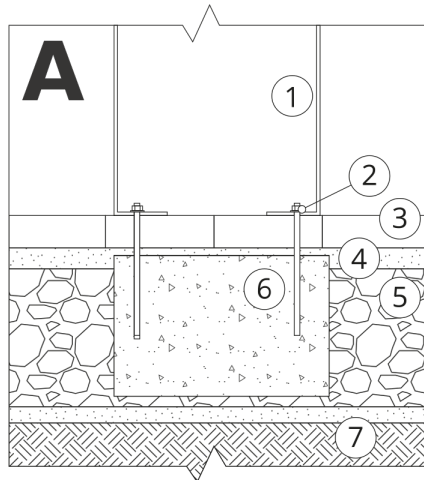
Iwona Żaczek

Product: Solar bench Flash
 Catalog number: 02.025.3
 Designer: Iwona Żaczek

In accordance with the Polish Law on Copyright and Related Rights of 04.02.1994 (Official Journal of Laws No. 24, item 83, corrected: Journal of Laws No. 43, item 170) and in accordance with the EU copyright legislation including all EU directives and regulations on copyright, Zano Mirosław Zarotynski Company, reserves the copyright of drawings, descriptions, 3D models, renderings, graphics, content contained in offers, attachments to offers and all other documents. Its content is the intellectual property of ZANO Mirosław Zarotynski company. The use of author's ideas, solutions, copying, distribution of photos, graphics or fragments of graphics, descriptive texts, for profit, without the permission of the author - ZANO Mirosław Zarotynski company - is prohibited and constitutes a copyright infringement and is punishable.

NOTE: The drawings do not reflect the actual dimensions of the foundation. These are only sample installation diagrams taking into account the type of anchoring and the material of the substrate to which to attach the furniture.

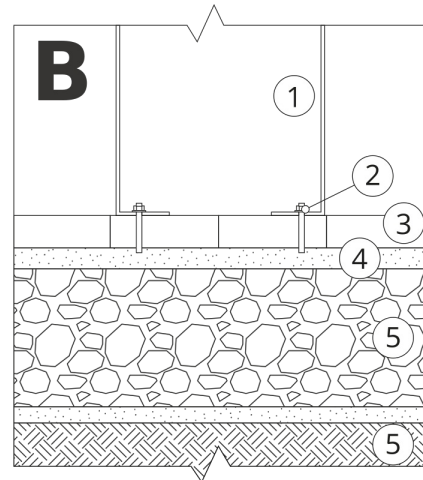
The size of the foundation depends on local foundation conditions.



INSTALLATION TO PAVING WITH FOUNDATION

Installation description

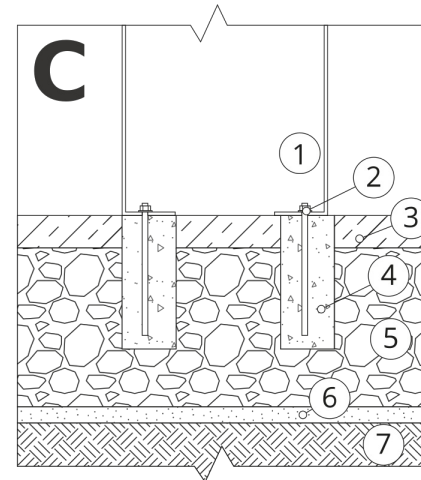
1. ZANO product
2. Quick-attachment / quick-attachment or chemical anchor
3. Stone paving / concrete paving / stone slabs / concrete slabs
4. Sand ballast (approximately 2 - 4 cm)
5. Stone aggregate substructure
6. Concrete foundation of C16/20 class (top surface of concrete 10 cm below paving surface)
7. Local land



MOUNTING TO PAVING

Installation description

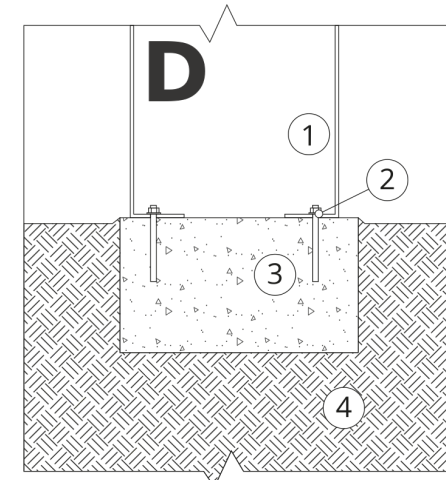
1. ZANO product
2. Quick-attachment / quick-attachment or chemical anchor
3. Stone paving / concrete paving / stone slabs / concrete slabs
4. Sand ballast (approximately 2 - 4 cm)
5. Stone aggregate substructure
6. Local land



MOUNTING TO CONCRETE / ASPHALT

Installation description

1. ZANO product
2. Quick-attachment / quick-attachment or chemical anchor
3. Fixed restrained surface, such as concrete or asphalt
4. Concrete foundation of C16/20 class (top surface of concrete 10 cm below paving surface)
5. Stone aggregate substructure
6. Sand ballast (approximately 2 - 4 cm)
7. Local land



MOUNTING TO CONCRETE FOUNDATION

Installation description

1. ZANO product
2. Quick-attachment / quick-attachment or chemical anchor
3. Concrete foundation of C16/20 class (top surface of concrete 10 cm below paving surface)
4. Local land