

OPTIONS

Construction:

- stainless steel (Aisi 304)

Mounting method:

- to screw

Logo:

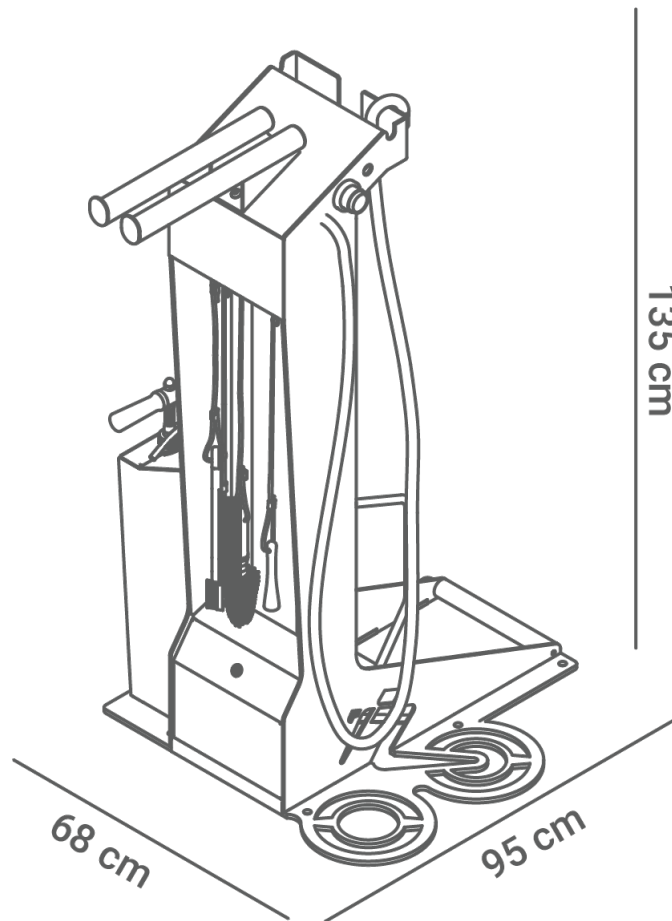
- no
- etched in stainless steel
- cut in steel
- sticker

DESCRIPTION

The KANGU station is used for emergency bicycle repair and maintenance. It also includes a low-pressure washer and a set of brushes specialized for cleaning specific parts of the bike. The station is made of high quality stainless steel.

The structure is welded and bolted from 5mm, 3mm, 1.5mm thick, 1.4301 ground stainless steel sheets. At the top of the station there is a bicycle rack - two stainless steel tubes with a cross section of 4.2 x 2.6 cm and a length of 45 cm. At the back of the station there is a bicycle rack made of stainless steel rods with a diameter of 14 mm. All brush fasteners (ropes), which are equipment of the station, are made of stainless steel. In the basic version, the station is equipped with a set of brushes and tools for washing the bicycle, as well as a timer button that, when pressed, activates the water. In addition, the station can be equipped with a timer tap for filling water bottles.

All elements of urban furniture must be properly anchored in accordance with the manufacturer's technical instructions. The manufacturer is not responsible for damage caused by negligent use or failure to...



GENERAL TECHNICAL DATA

Dimensions:

- width: 26 $\frac{3}{4}$ in
- height: 53 $\frac{1}{4}$ in
- depth: 37 $\frac{1}{2}$ in

Materials:

- construction - stainless steel

ZANO

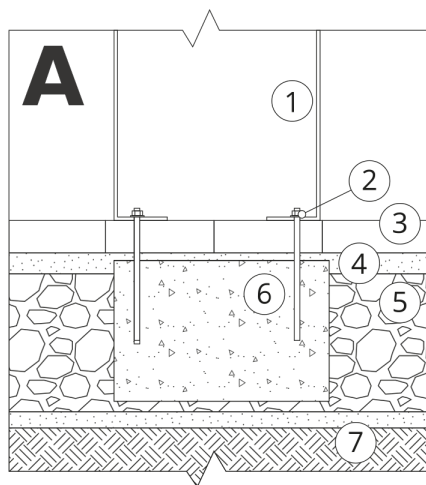
*Filip Babiarz*

Product:
Kangu bicycle washing and repair station
Catalog number: **18.004.7**
Designer: Filip Babiarz

In accordance with the Polish Law on Copyright and Related Rights of 04.02.1994 (Official Journal of Laws No. 24, item 83, corrected: Journal of Laws No. 43, item 170) and in accordance with the EU copyright legislation including all EU directives and regulations on copyright, Zano Mirosław Zarotynski Company, reserves the copyright of drawings, descriptions, 3D models, renderings, graphics, content contained in offers, attachments to offers and all other documents. Its content is the intellectual property of ZANO Mirosław Zarotynski company. The use of author's ideas, solutions, copying, distribution of photos, graphics or fragments of graphics, descriptive texts, for profit, without the permission of the author - ZANO Mirosław Zarotynski company - is prohibited and constitutes a copyright infringement and is punishable.

NOTE: The drawings do not reflect the actual dimensions of the foundation. These are only sample installation diagrams taking into account the type of anchoring and the material of the substrate to which to attach the furniture.

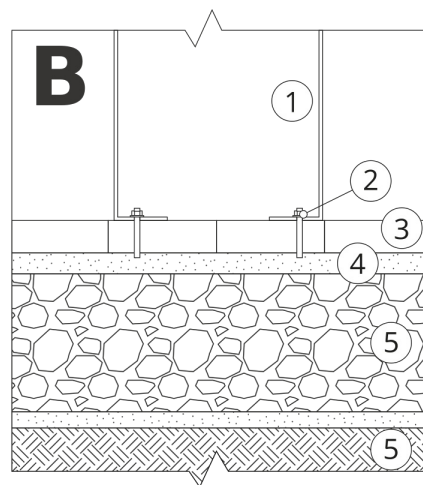
The size of the foundation depends on local foundation conditions.



INSTALLATION TO PAVING WITH FOUNDATION

Installation description

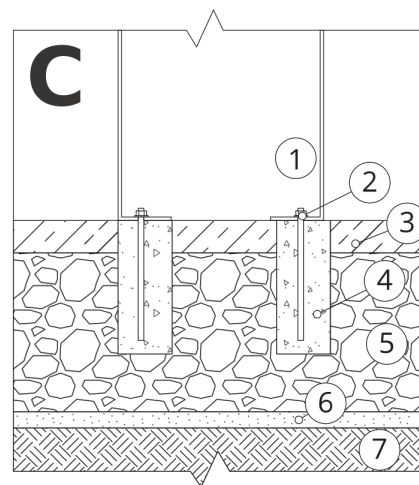
1. ZANO product
2. Quick-attachment / quick-attachment or chemical anchor
3. Stone paving / concrete paving / stone slabs / concrete slabs
4. Sand ballast (approximately 2 - 4 cm)
5. Stone aggregate substructure
6. Concrete foundation of C16/20 class (top surface of concrete 10 cm below paving surface)
7. Local land



MOUNTING TO PAVING

Installation description

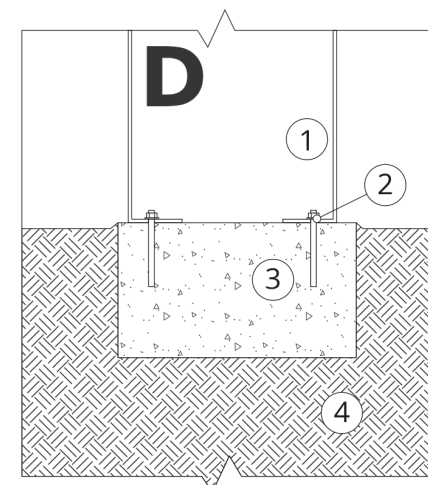
1. ZANO product
2. Quick-attachment / quick-attachment or chemical anchor
3. Stone paving / concrete paving / stone slabs / concrete slabs
4. Sand ballast (approximately 2 - 4 cm)
5. Stone aggregate substructure
6. Local land



MOUNTING TO CONCRETE / ASPHALT

Installation description

1. ZANO product
2. Quick-attachment / quick-attachment or chemical anchor
3. Fixed restrained surface, such as concrete or asphalt
4. Concrete foundation of C16/20 class (top surface of concrete 10 cm below paving surface)
5. Stone aggregate substructure
6. Sand ballast (approximately 2 - 4 cm)
7. Local land



MOUNTING TO CONCRETE FOUNDATION

Installation description

1. ZANO product
2. Quick-attachment / quick-attachment or chemical anchor
3. Concrete foundation of C16/20 class (top surface of concrete 10 cm below paving surface)
4. Local land