



## OPTIONS

**Construction:**

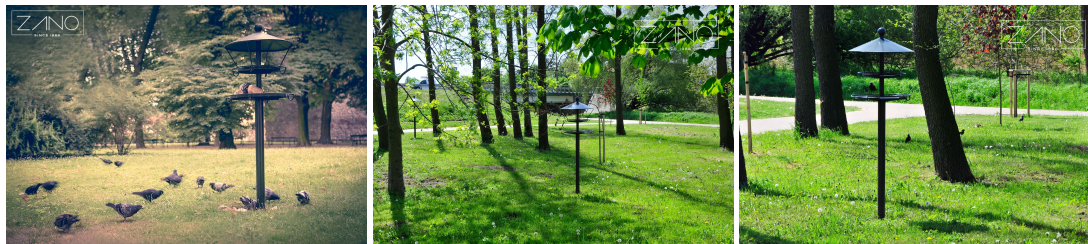
- carbon steel (s235Jr)

**Mounting method:**

- to be grouted in

## DESCRIPTION

A brand-new addition to ZANO's lineup, this bird feeder features a vintage design that merges the practicality of traditional feeders with an eye for design, a signature of ZANO. Its focus on aesthetics is vital as the feeder also serves as a decorative piece, akin to any other type of urban furniture. Constructed from steel pipes available in any RAL color and embellished with cast iron elements for decoration. The unit is supported by a 2.4-meter tall pole and is installed using a concrete base.





## GENERAL TECHNICAL DATA

### Dimensions:

- width: 25 1/2 in
- height from ground surface: 78 3/4 in
- height with anchor section: 98 1/2 in

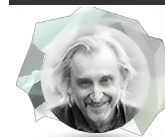
### Weight:

- 110 lb

### Materials:

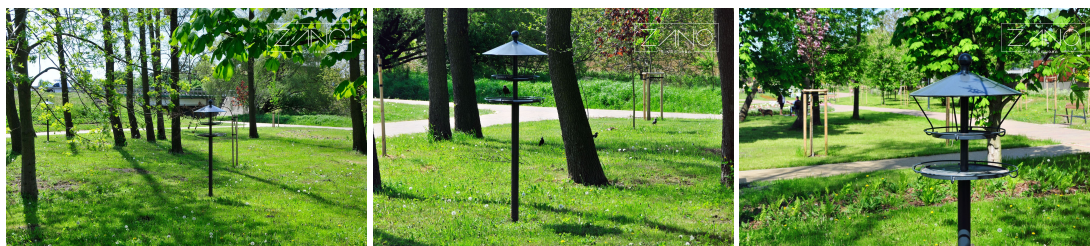
- iron castings
- steel tubes

ZANO



Product: Bird feeder  
Catalog number: **14.001**  
Designer: Tomasz Szpytma

In accordance with the Polish Law on Copyright and Related Rights of 04.02.1994 (Official Journal of Laws No. 24, item 83, corrected: Journal of Laws No. 43, item 170) and in accordance with the EU copyright legislation including all EU directives and regulations on copyright, Zano Mirosław Zarotynski Company, reserves the copyright of drawings, descriptions, 3D models, renderings, graphics, content contained in offers, attachments to offers and all other documents. Its content is the intellectual property of ZANO Mirosław Zarotynski company. The use of author's ideas, solutions, copying, distribution of photos, graphics or fragments of graphics, descriptive texts, for profit, without the permission of the author - ZANO Mirosław Zarotynski company - is prohibited and constitutes a copyright infringement and is punishable.



**NOTE:** The drawings do not reflect the actual dimensions of the foundation. These are only sample installation diagrams taking into account the type of anchoring and the material of the substrate to which to attach the furniture.

The size of the foundation depends on local foundation conditions.



### INSTALLATION TO PAVING WITH FOUNDATION

#### Installation description

1. ZANO product
2. Stone paving / concrete paving / stone slabs / concrete slabs
3. Sand ballast (approximately 2 - 4 cm)
4. Concrete foundation of C16/20 class (top surface of concrete 10 cm below paving surface)
5. Local land



### MOUNTING TO CONCRETE FOUNDATION

#### Installation description

1. ZANO product
2. Concrete foundation of C16/20 class (top surface of concrete 10 cm below paving surface)
3. Local land



### MOUNTING TO CONCRETE FOUNDATION

#### Installation description

1. ZANO product
2. Fixed restrained surface, such as concrete or asphalt
3. Concrete foundation of C16/20 class (top surface of concrete 10 cm below paving surface)
4. Stone aggregate substructure
5. Sand ballast (approximately 2 - 4 cm)
6. Local land