

OPTIONS

Construction:

- carbon steel (s235Jr)
- stainless steel (Aisi 304)

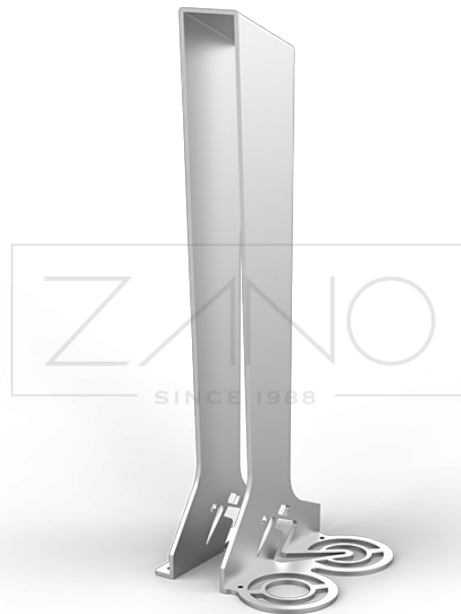
Mounting method:

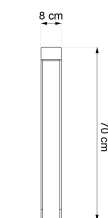
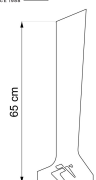
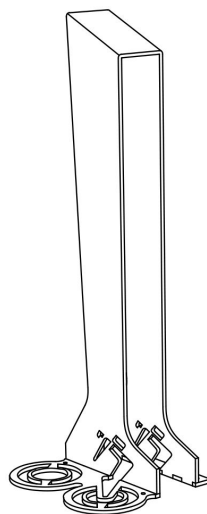
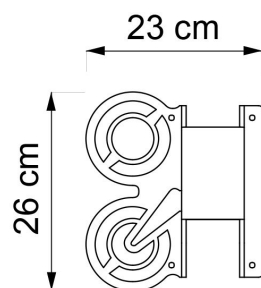
- to screw

DESCRIPTION

The **metal bicycle stand Kangu** is a sleek, contemporary piece of urban furniture designed for single bicycle parking. It boasts a unique, futuristic design that distinguishes it from other bike stands. The base features a cyclist silhouette cut out of steel. Paired with the Kangu repair station, this stand makes a perfect addition to locations such as office complexes, educational institutions, or shopping centers.

Constructed from 6 mm thick **stainless steel**, the Kangu stand also offers an option for carbon steel construction, which can be painted in a customer-specified RAL color. It is mounted to the ground using wall plugs and screws.





GENERAL TECHNICAL DATA

Dimensions:

- width: 3 1/4 in
- height: 27 1/2 in
- depth: 10 1/4 in
- base width: 9 in

Weight:

- 26 lb

Materials:

- carbon steel or stainless steel

ZANO

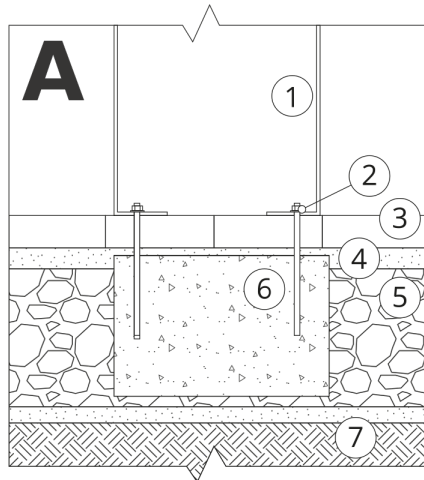

Iwona Żaczek

Product:
Kangu bicycle stand
Catalog number: **05.004**
Designer: Iwona Żaczek

In accordance with the Polish Law on Copyright and Related Rights of 04.02.1994 (Official Journal of Laws No. 24, item 83, corrected: Journal of Laws No. 43, item 170) and in accordance with the EU copyright legislation including all EU directives and regulations on copyright, Zano Mirosław Zarotynski Company, reserves the copyright of drawings, descriptions, 3D models, renderings, graphics, content contained in offers, attachments to offers and all other documents. Its content is the intellectual property of ZANO Mirosław Zarotynski company. The use of author's ideas, solutions, copying, distribution of photos, graphics or fragments of graphics, descriptive texts, for profit, without the permission of the author - ZANO Mirosław Zarotynski company - is prohibited and constitutes a copyright infringement and is punishable.

NOTE: The drawings do not reflect the actual dimensions of the foundation. These are only sample installation diagrams taking into account the type of anchoring and the material of the substrate to which to attach the furniture.

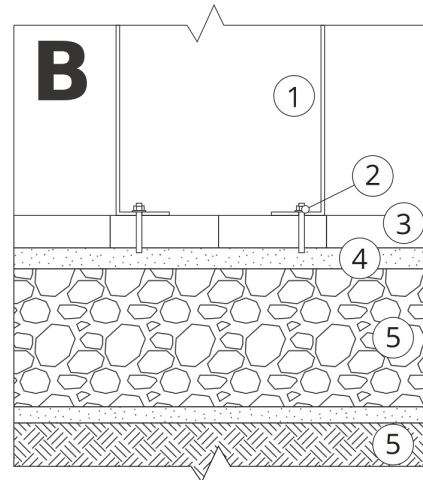
The size of the foundation depends on local foundation conditions.



INSTALLATION TO PAVING WITH FOUNDATION

Installation description

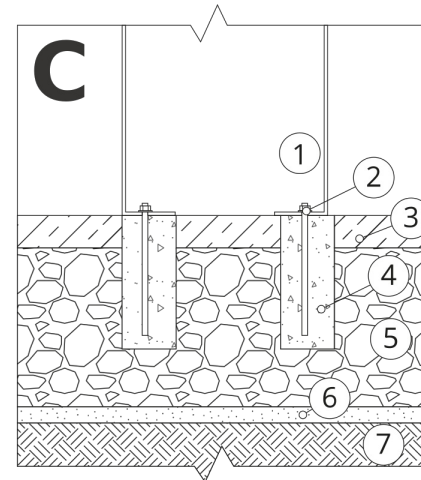
1. ZANO product
2. Quick-attachment / quick-attachment or chemical anchor
3. Stone paving / concrete paving / stone slabs / concrete slabs
4. Sand ballast (approximately 2 - 4 cm)
5. Stone aggregate substructure
6. Concrete foundation of C16/20 class (top surface of concrete 10 cm below paving surface)
7. Local land



MOUNTING TO PAVING

Installation description

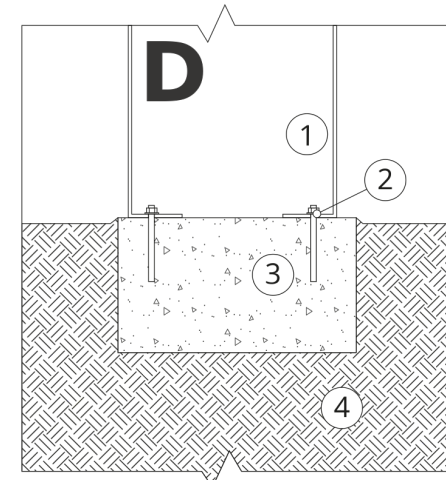
1. ZANO product
2. Quick-attachment / quick-attachment or chemical anchor
3. Stone paving / concrete paving / stone slabs / concrete slabs
4. Sand ballast (approximately 2 - 4 cm)
5. Stone aggregate substructure
6. Local land



MOUNTING TO CONCRETE / ASPHALT

Installation description

1. ZANO product
2. Quick-attachment / quick-attachment or chemical anchor
3. Fixed restrained surface, such as concrete or asphalt
4. Concrete foundation of C16/20 class (top surface of concrete 10 cm below paving surface)
5. Stone aggregate substructure
6. Sand ballast (approximately 2 - 4 cm)
7. Local land



MOUNTING TO CONCRETE FOUNDATION

Installation description

1. ZANO product
2. Quick-attachment / quick-attachment or chemical anchor
3. Concrete foundation of C16/20 class (top surface of concrete 10 cm below paving surface)
4. Local land