

## OPTIONS

### Construction:

- carbon steel (s235Jr)

### Mounting method:

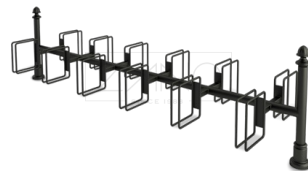
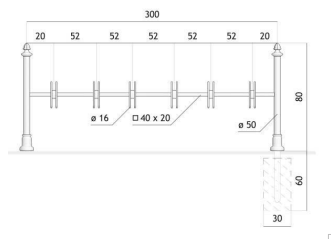
- to be grouted in

### Number of parking spaces:

- spaces for 8 bicycles
- spaces for 10 bicycles
- spaces for 12 bicycles
- spaces for 14 bicycles

## DESCRIPTION

The Gemini 05.451 model stands out for several reasons. Its traditional design, featuring two brackets with ornate ends, evokes the charm of historic architecture. It's no wonder this model is the premier choice in our Retro series, designed to enhance the aesthetic of urban and particularly historic settings. This rack integrates seamlessly into areas adorned with aged structures. The model's distinctiveness also shines through in its utility. It can hold between eight to twelve bikes, depending on the configuration chosen, while being compact since it is a double-sided unit. The 05.451 is crafted from black steel, cast iron, steel tubing, and closed profiles, noted for its pleasing appearance and meticulous attention to detail.



## GENERAL TECHNICAL DATA

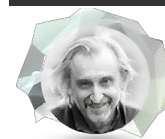
**Dimensions:**

- width: 11 <sup>3</sup>/<sub>4</sub> in
- length: 118 in
- height from ground surface: 31 <sup>1</sup>/<sub>2</sub> in
- height with anchor section: 55 in

**Materials:**

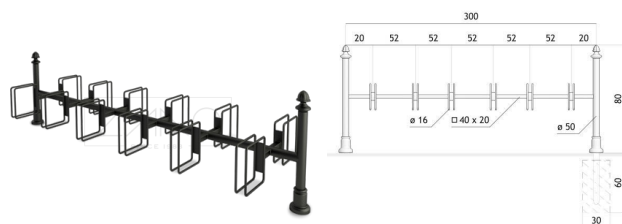
- iron castings
- steel tubes
- closed profiles

ZANO



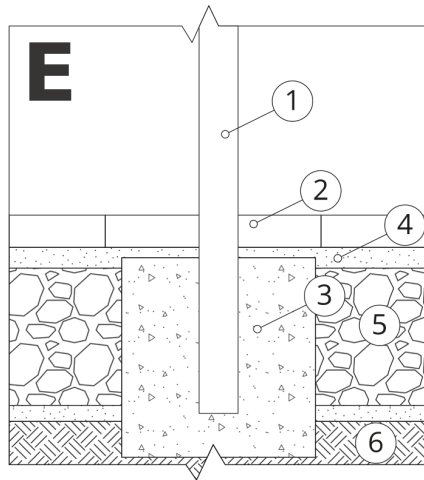
Product:  
 Gemini bicycle stand  
 Catalog number: **05.451**  
 Designer: Tomasz Szpytma

In accordance with the Polish Law on Copyright and Related Rights of 04.02.1994 (Official Journal of Laws No. 24, item 83, corrected: Journal of Laws No. 43, item 170) and in accordance with the EU copyright legislation including all EU directives and regulations on copyright, Zano Mirosław Zarotynski Company, reserves the copyright of drawings, descriptions, 3D models, renderings, graphics, content contained in offers, attachments to offers and all other documents. Its content is the intellectual property of ZANO Mirosław Zarotynski company. The use of author's ideas, solutions, copying, distribution of photos, graphics or fragments of graphics, descriptive texts, for profit, without the permission of the author - ZANO Mirosław Zarotynski company - is prohibited and constitutes a copyright infringement and is punishable.



**NOTE:** The drawings do not reflect the actual dimensions of the foundation. These are only sample installation diagrams taking into account the type of anchoring and the material of the substrate to which to attach the furniture.

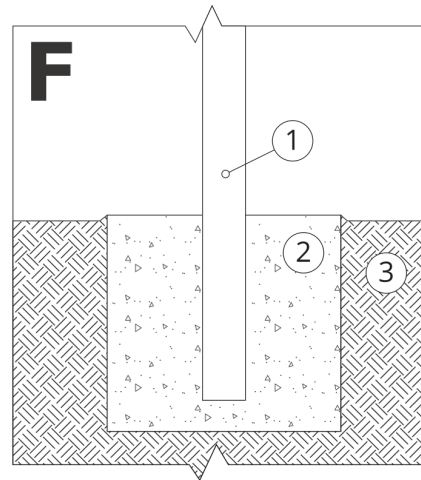
The size of the foundation depends on local foundation conditions.



### INSTALLATION TO PAVING WITH FOUNDATION

#### Installation description

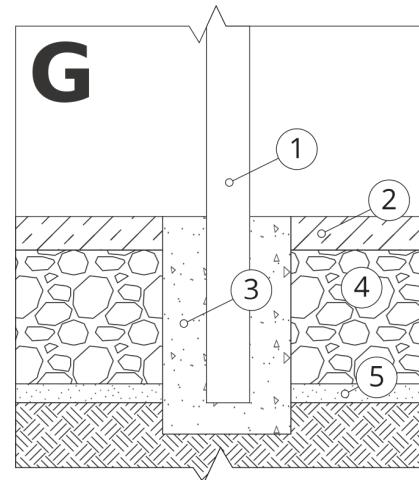
1. ZANO product
2. Stone paving / concrete paving / stone slabs / concrete slabs
3. Sand ballast (approximately 2 - 4 cm)
4. Concrete foundation of C16/20 class (top surface of concrete 10 cm below paving surface)
5. Local land



### MOUNTING TO CONCRETE FOUNDATION

#### Installation description

1. ZANO product
2. Concrete foundation of C16/20 class (top surface of concrete 10 cm below paving surface)
3. Local land



### MOUNTING TO CONCRETE FOUNDATION

#### Installation description

1. ZANO product
2. Fixed restrained surface, such as concrete or asphalt
3. Concrete foundation of C16/20 class (top surface of concrete 10 cm below paving surface)
4. Stone aggregate substructure
5. Sand ballast (approximately 2 - 4 cm)
6. Local land