

## OPTIONS

---

**Construction:**

- carbon steel (s235Jr)

**Methods of installation:**

- embedded in concrete

**Road sign:**

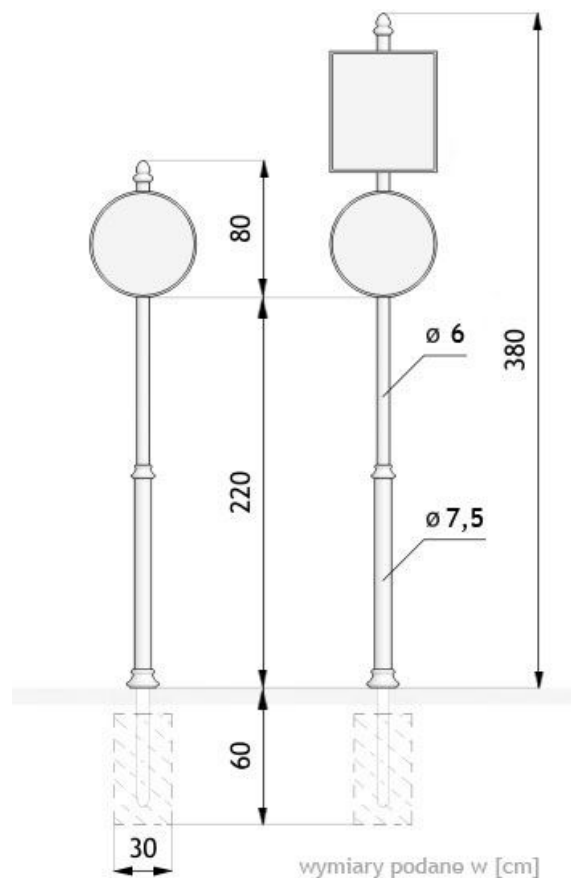
- 1 sign
- 2 signs

## DESCRIPTION

---

Traffic signs can't direct traffic if they can't be seen. Thanks to our traffic sign posts this situation won't be a problem any more. Our modular systems will keep your signs standing tall, so traffic around your lots and grounds flows without a hitch. Sign posts keep your signs visible in a way that no motorist can miss. They're sturdy, last long, and permanently display signs around the premises. Presented models are manufactured from black steel which is available in all RAL palette standard colours.





## GENERAL TECHNICAL DATA

### Dimensions:

- height from ground to sign: 220 cm
- height of post with 1 sign: 300 cm
- height of post with 2 signs: 380 cm

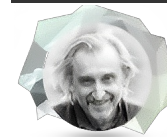
### Weight:

- 1 sign: 20 kg
- 2 signs: 24 kg

### Materials:

- iron castings
- steel tubes

ZANO



Product:  
Signum Traffic sign posts  
Catalog number: **04.041**  
Designer: Tomasz Szpytma

In accordance with the Polish Law on Copyright and Related Rights of 04.02.1994 (Official Journal of Laws No. 24, item 83, corrected: Journal of Laws No. 43, item 170) and in accordance with the EU copyright legislation including all EU directives and regulations on copyright, Zano Mirosław Zarotynski Company, reserves the copyright of drawings, descriptions, 3D models, renderings, graphics, content contained in offers, attachments to offers and all other documents. Its content is the intellectual property of ZANO Mirosław Zarotynski company. The use of author's ideas, solutions, copying, distribution of photos, graphics or fragments of graphics, descriptive texts, for profit, without the permission of the author - ZANO Mirosław Zarotynski company - is prohibited and constitutes a copyright infringement and is punishable.

**NOTE:** The drawings do not reflect the actual dimensions of the foundation. They are only exemplary assembly schemes taking into account the type of anchoring and the substrate material to which the furniture is to be fixed.

The size of the foundation depends on the local foundation conditions.



### INSTALLATION INTO PAVING WITH FOUNDATION

#### Description of the assembly

1. ZANO product
2. Stone paving / concrete paving / stone slabs / concrete slabs
3. Sand ballast (approx. 2 - 4 cm)
4. Concrete foundation, class C16/20 (top surface concrete 10 cm below paving surface)
5. Ground



### MOUNTING TO CONCRETE FOUNDATION

#### Description of the assembly

1. ZANO product
2. Concrete foundation, class C16/20 (top surface concrete 10 cm below paving surface)
3. Ground



### MOUNTING TO CONCRETE FOUNDATION

#### Description of the assembly

1. ZANO product
2. Fixed hardened surface e.g. concrete or asphalt
3. Concrete foundation, class C16/20 (top surface concrete 10 cm below paving surface)
4. Stone aggregate substructure
5. Sand ballast (approx. 2 - 4 cm)
6. Ground