



OPTIONS

Construction:

- carbon steel (s235Jr)

Seat and backrest:

- soft wood
- hardwood of European origin
- hard wood (oil finish)
- premium hard wood

Methods of installation:

- attached by bolts to foundation

DESCRIPTION

Presented bench is an excellent example of classic style street furniture. The comfortable black steel construction and elegant soft wood seating section were designed to compose with nature and urban surroundings. The seating and backrest offer comfortable support. This model offers also a timeless design that can provide comfort and style to any traditional landscape, such as: parks, gardens, playgrounds etc. Presented bench is available in all RAL palette standard colours (for example: black matt, dark graphite or dark green).

GENERAL TECHNICAL DATA

Dimensions:

- width: 67 cm
- length: 240 cm
- height: 85 cm

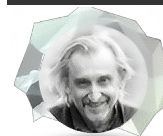
Weight:

- 70 kg

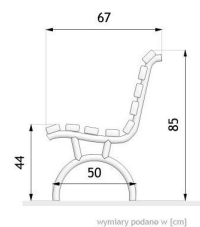
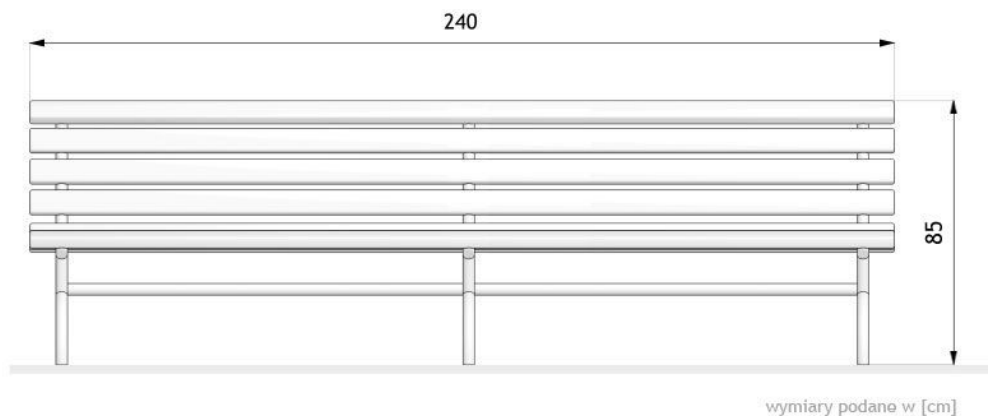
Materials:

- carbon steel
- chemically cured paint
- softwood planks

ZANO



Product: Bench Parco
 Catalog number: **02.086.1**
 Designer: Tomasz Szpytma



In accordance with the Polish Law on Copyright and Related Rights of 04.02.1994 (Official Journal of Laws No. 24, item 83, corrected: Journal of Laws No. 43, item 170) and in accordance with the EU copyright legislation including all EU directives and regulations on copyright, Zano Mirosław Zarotynski Company, reserves the copyright of drawings, descriptions, 3D models, renderings, graphics, content contained in offers, attachments to offers and all other documents. Its content is the intellectual property of ZANO Mirosław Zarotynski company. The use of author's ideas, solutions, copying, distribution of photos, graphics or fragments of graphics, descriptive texts, for profit, without the permission of the author - ZANO Mirosław Zarotynski company - is prohibited and constitutes a copyright infringement and is punishable.

NOTE: The drawings do not reflect the actual dimensions of the foundation. They are only exemplary assembly schemes taking into account the type of anchoring and the substrate material to which the furniture is to be fixed.

The size of the foundation depends on the local foundation conditions.



INSTALLATION INTO PAVING WITH FOUNDATION

Description of the assembly

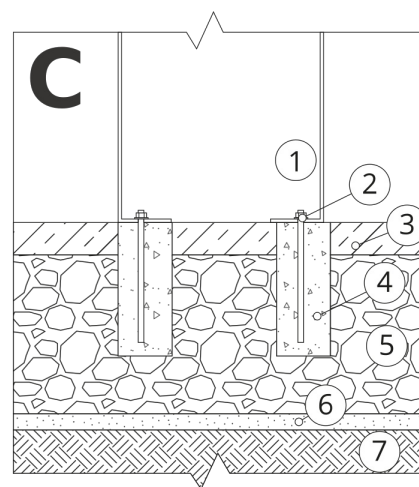
1. ZANO product
2. Quick-action fastener or chemical anchor
3. Stone paving / concrete paving / stone slabs / concrete slabs
4. Sand ballast (approx. 2 - 4 cm)
5. Stone aggregate substructure
6. Concrete foundation, class C16/20 (top surface concrete 10 cm below paving surface)
7. Ground



INSTALLATION TO PAVING

Description of the assembly

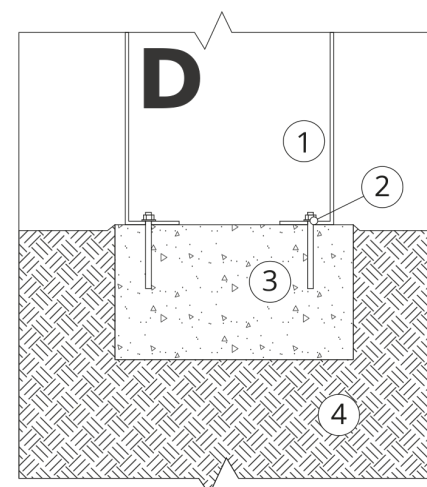
1. ZANO product
2. Quick-action fastener or chemical anchor
3. Stone paving / concrete paving / stone slabs / concrete slabs
4. Sand ballast (approx. 2 - 4 cm)
5. Stone aggregate substructure
6. Ground



CONCRETE / ASPHALT MOUNTING

Description of the assembly

1. ZANO product
2. Quick-action fastener or chemical anchor
3. Fixed hardened surface e.g. concrete or asphalt
4. Concrete foundation, class C16/20 (top surface concrete 10 cm below paving surface)
5. Stone aggregate substructure
6. Sand ballast (approx. 2 - 4 cm)
7. Ground



MOUNTING TO CONCRETE FOUNDATION

Description of the assembly

1. ZANO product
2. Quick-action fastener or chemical anchor
3. Concrete foundation, class C16/20 (top surface concrete 10 cm below paving surface)
4. Ground