

OPTIONS

Construction:

- carbon steel (s235Jr)

Methods of installation:

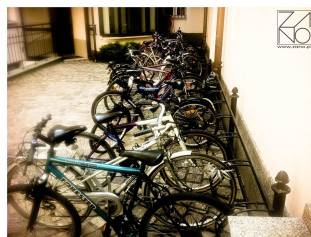
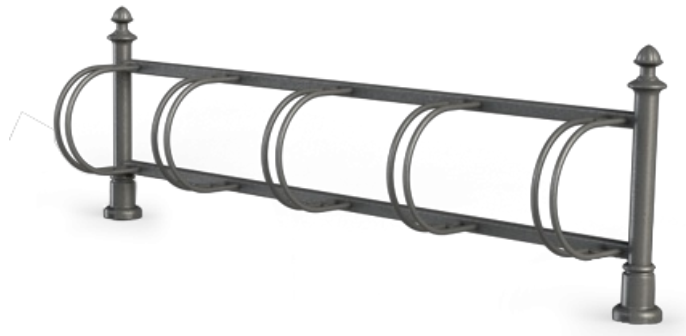
- embedded in concrete

Rack size:

- 3
- 4
- 5
- 6
- 7

DESCRIPTION

Presented bicycle rack is an aesthetic and functional project for those who travel by bike. Bicyclists need reasonable protection against theft. Decora 05.050 bicycle rack is a great answer for this requiring. First of all, its double steel rings attached to the front hold bicycle wheels securely in place. What is more, black steel and cast iron ornaments guarantee timeless aesthetic. 05.050 bicycle rack has a space for even seven bicycles. To sum up, ZANO Street Furniture bicycle rack is a piece of street furniture that looks amazingly while providing many benefits.



GENERAL TECHNICAL DATA

Dimensions:

- width: 30 cm
- length: 220 cm
- height from ground surface: 62 cm
- height with anchoring section: 140 cm

Materials:

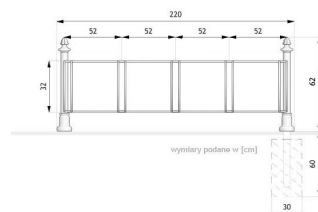
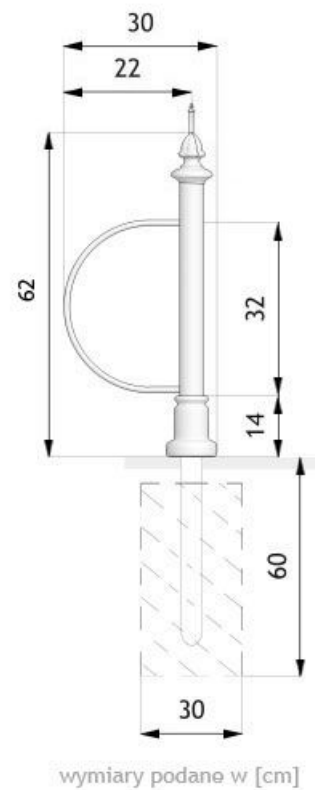
- iron castings
- steel tubes
- closed profiles
- round bars

ZANO



Product:
Decora Bicycle Rack
Catalog number: **05.050**
Designer: Tomasz Szpytma

In accordance with the Polish Law on Copyright and Related Rights of 04.02.1994 (Official Journal of Laws No. 24, item 83, corrected: Journal of Laws No. 43, item 170) and in accordance with the EU copyright legislation including all EU directives and regulations on copyright, Zano Mirosław Zarotynski Company, reserves the copyright of drawings, descriptions, 3D models, renderings, graphics, content contained in offers, attachments to offers and all other documents. Its content is the intellectual property of ZANO Mirosław Zarotynski company. The use of author's ideas, solutions, copying, distribution of photos, graphics or fragments of graphics, descriptive texts, for profit, without the permission of the author - ZANO Mirosław Zarotynski company - is prohibited and constitutes a copyright infringement and is punishable.



NOTE: The drawings do not reflect the actual dimensions of the foundation. They are only exemplary assembly schemes taking into account the type of anchoring and the substrate material to which the furniture is to be fixed.

The size of the foundation depends on the local foundation conditions.



INSTALLATION INTO PAVING WITH FOUNDATION

Description of the assembly

1. ZANO product
2. Stone paving / concrete paving / stone slabs / concrete slabs
3. Sand ballast (approx. 2 - 4 cm)
4. Concrete foundation, class C16/20 (top surface concrete 10 cm below paving surface)
5. Ground



MOUNTING TO CONCRETE FOUNDATION

Description of the assembly

1. ZANO product
2. Concrete foundation, class C16/20 (top surface concrete 10 cm below paving surface)
3. Ground



MOUNTING TO CONCRETE FOUNDATION

Description of the assembly

1. ZANO product
2. Fixed hardened surface e.g. concrete or asphalt
3. Concrete foundation, class C16/20 (top surface concrete 10 cm below paving surface)
4. Stone aggregate substructure
5. Sand ballast (approx. 2 - 4 cm)
6. Ground