

OPTIONS

Construction:

- stainless steel (Aisi 304)

Methods of installation:

- attached by bolts to foundation

Logo:

- none
- etching in stainless steel
- cut in steel
- sticker

DESCRIPTION

"KANGU"- Self-service station for ad-hoc repair and cleaning of bicycles. It is designed for self-repair and maintenance of bicycles and for cleaning by the user using the station structure as a base and the brushes and tools included in the equipment.

Model 18.004.7 is characterised by an integrated bicycle stand, a floor pump with a manometer. The station has both tools for repairs and brushes and a low-pressure washer for washing the bike.

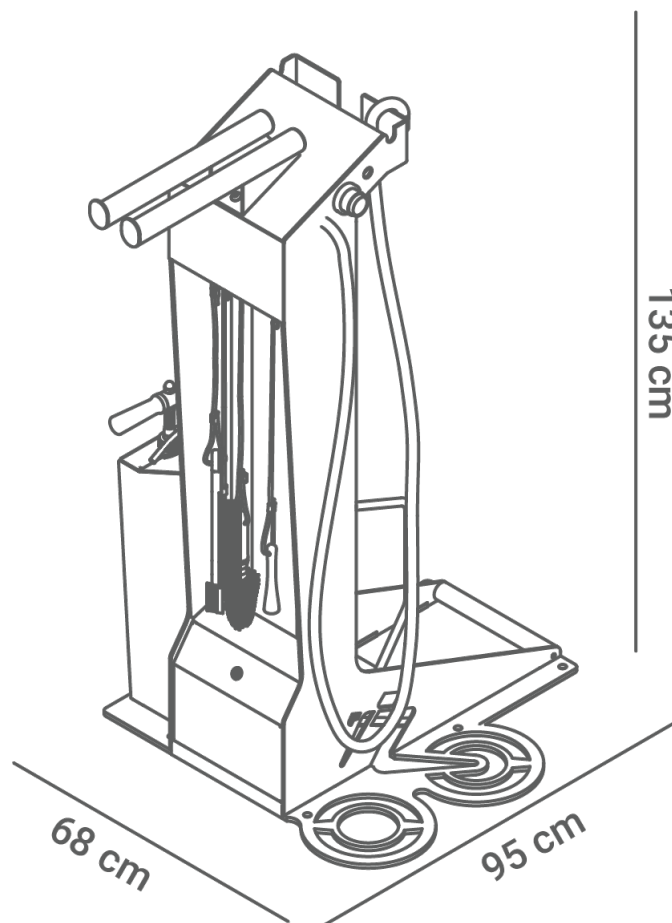
The welded construction from **5 mm thick** steel plates ensures the **stability** and **durability** of the product.

KANG models for washing bicycles are made only and entirely of stainless steel 1.4301 ground.

Station equipment:

- a holder made of two stainless steel tubes for hanging the bicycle (tube dimensions: dia. 42 x 2.6 mm, length 450 mm);
- brushes - attached to stainless steel cables (8 mm in diameter) in PVC sheathing. They are attached to the cables with steel swivels which prevents the tools from tangling;
- low-pressure washer (connection to mains water supply required);
- water tap with timer;
- bike stand
- bike repair tool kit

- floor pump with pressure gauge; compatible with...



GENERAL TECHNICAL DATA

Dimensions:

- width: 68 cm
- height: 135 cm
- depth: 95 cm

Materials:

- construction - stainless steel

ZANO

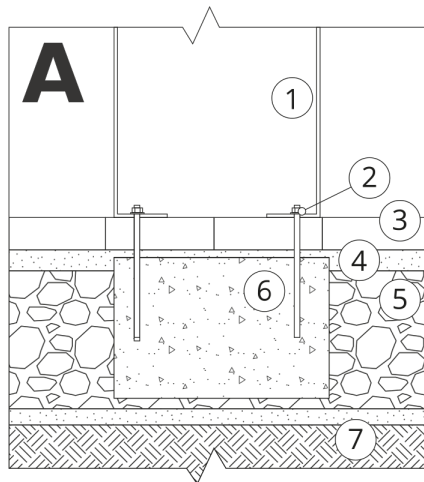
*Filip Babiarz*

Product:
Kangu bicycle washing and repair station
Catalog number: **18.004.7**
Designer: Filip Babiarz

In accordance with the Polish Law on Copyright and Related Rights of 04.02.1994 (Official Journal of Laws No. 24, item 83, corrected: Journal of Laws No. 43, item 170) and in accordance with the EU copyright legislation including all EU directives and regulations on copyright, Zano Mirosław Zarotynski Company, reserves the copyright of drawings, descriptions, 3D models, renderings, graphics, content contained in offers, attachments to offers and all other documents. Its content is the intellectual property of ZANO Mirosław Zarotynski company. The use of author's ideas, solutions, copying, distribution of photos, graphics or fragments of graphics, descriptive texts, for profit, without the permission of the author - ZANO Mirosław Zarotynski company - is prohibited and constitutes a copyright infringement and is punishable.

NOTE: The drawings do not reflect the actual dimensions of the foundation. They are only exemplary assembly schemes taking into account the type of anchoring and the substrate material to which the furniture is to be fixed.

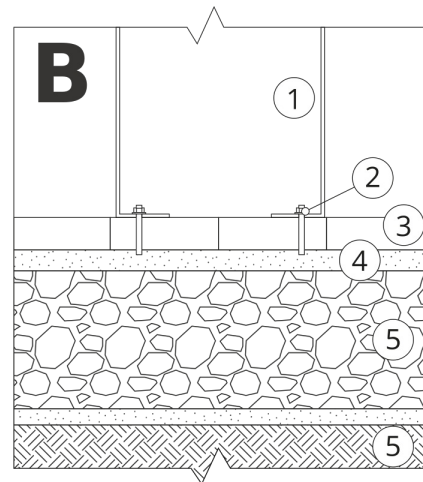
The size of the foundation depends on the local foundation conditions.



INSTALLATION INTO PAVING WITH FOUNDATION

Description of the assembly

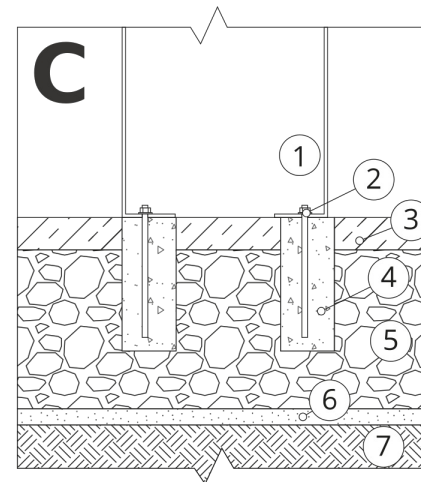
1. ZANO product
2. Quick-action fastener or chemical anchor
3. Stone paving / concrete paving / stone slabs / concrete slabs
4. Sand ballast (approx. 2 - 4 cm)
5. Stone aggregate substructure
6. Concrete foundation, class C16/20 (top surface concrete 10 cm below paving surface)
7. Ground



INSTALLATION TO PAVING

Description of the assembly

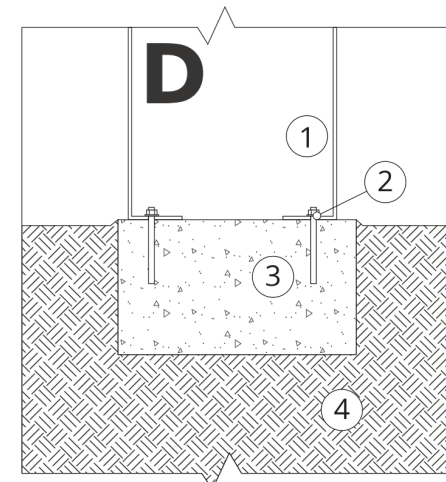
1. ZANO product
2. Quick-action fastener or chemical anchor
3. Stone paving / concrete paving / stone slabs / concrete slabs
4. Sand ballast (approx. 2 - 4 cm)
5. Stone aggregate substructure
6. Ground



CONCRETE / ASPHALT MOUNTING

Description of the assembly

1. ZANO product
2. Quick-action fastener or chemical anchor
3. Fixed hardened surface e.g. concrete or asphalt
4. Concrete foundation, class C16/20 (top surface concrete 10 cm below paving surface)
5. Stone aggregate substructure
6. Sand ballast (approx. 2 - 4 cm)
7. Ground



MOUNTING TO CONCRETE FOUNDATION

Description of the assembly

1. ZANO product
2. Quick-action fastener or chemical anchor
3. Concrete foundation, class C16/20 (top surface concrete 10 cm below paving surface)
4. Ground