



## OPTIONS

---

**Construction:**

- carbon steel (s235Jr)
- stainless steel (Aisi 304)

**Methods of installation:**

- attached by bolts to foundation

**Ashtray:**

- include

**Container:**

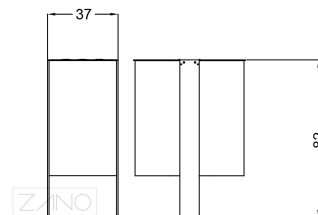
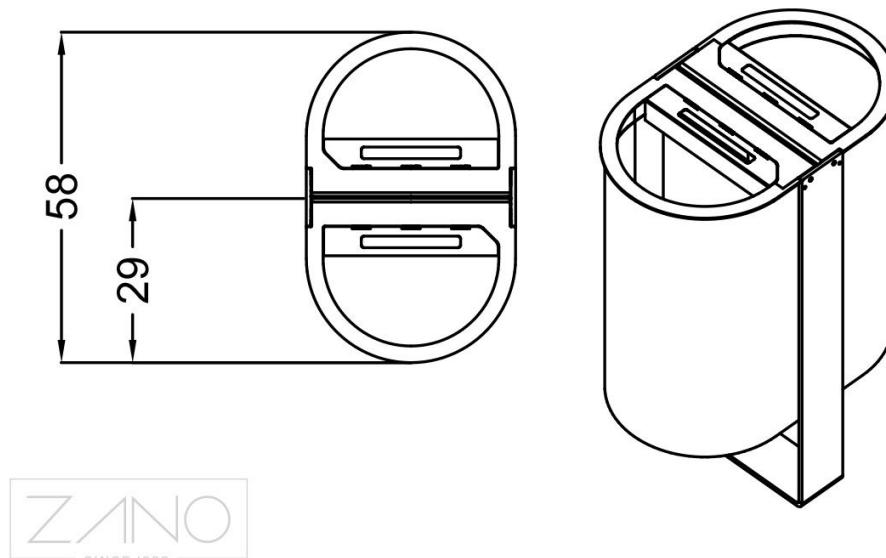
- galvanized steel container

## DESCRIPTION

---

The Start litter bin 03.244.1 is an extension of the basic model with a second waste chamber and extra built-in ashtray. This increases the capacity to 60 litres. The basket is available in two variants: - in stainless steel - in carbon steel with stainless steel, where the structure is made of carbon steel and the container is made of stainless steel (carbon steel is galvanised and then painted in a RAL colour specified by the client) Inside the basket there are removable inserts made of galvanised sheet. Thanks to the removable insert, it is much easier to dispose of waste.





## GENERAL TECHNICAL DATA

### Dimensions:

- width: 37 cm
- height: 82 cm
- depth: 58 cm

### Weight:

- 60 kg

### Capacity:

- number of containers: 2 szt.
- capacity of one container: 30 l

### Materials:

- construction - stainless steel or carbon steel
- container - stainless steel
- insert - galvanised sheet metal

ZANO



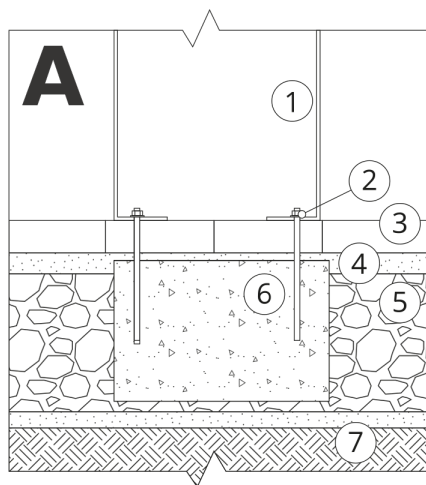
*Filip Babiarz*

Product:  
Double litter bin with ashtray  
Catalog number: **03.244.1**  
Designer: Filip Babiarz

In accordance with the Polish Law on Copyright and Related Rights of 04.02.1994 (Official Journal of Laws No. 24, item 83, corrected: Journal of Laws No. 43, item 170) and in accordance with the EU copyright legislation including all EU directives and regulations on copyright, Zano Mirosław Zarotynski Company, reserves the copyright of drawings, descriptions, 3D models, renderings, graphics, content contained in offers, attachments to offers and all other documents. Its content is the intellectual property of ZANO Mirosław Zarotynski company. The use of author's ideas, solutions, copying, distribution of photos, graphics or fragments of graphics, descriptive texts, for profit, without the permission of the author - ZANO Mirosław Zarotynski company - is prohibited and constitutes a copyright infringement and is punishable.

**NOTE:** The drawings do not reflect the actual dimensions of the foundation. They are only exemplary assembly schemes taking into account the type of anchoring and the substrate material to which the furniture is to be fixed.

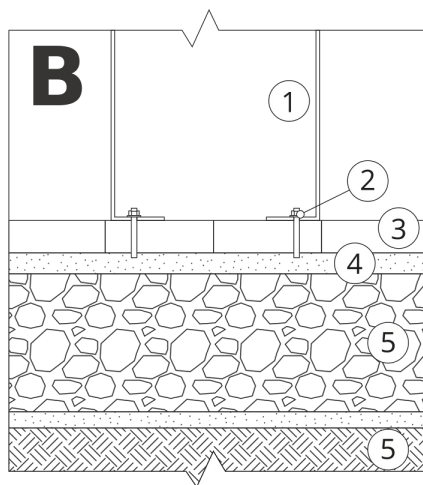
The size of the foundation depends on the local foundation conditions.



### INSTALLATION INTO PAVING WITH FOUNDATION

#### Description of the assembly

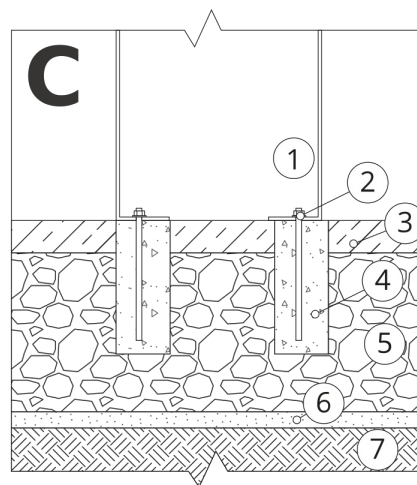
1. ZANO product
2. Quick-action fastener or chemical anchor
3. Stone paving / concrete paving / stone slabs / concrete slabs
4. Sand ballast (approx. 2 - 4 cm)
5. Stone aggregate substructure
6. Concrete foundation, class C16/20 (top surface concrete 10 cm below paving surface)
7. Ground



### INSTALLATION TO PAVING

#### Description of the assembly

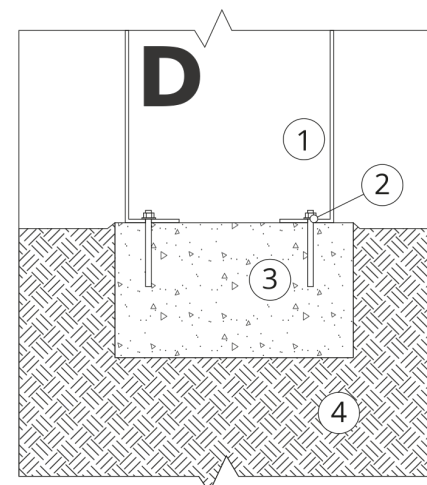
1. ZANO product
2. Quick-action fastener or chemical anchor
3. Stone paving / concrete paving / stone slabs / concrete slabs
4. Sand ballast (approx. 2 - 4 cm)
5. Stone aggregate substructure
6. Ground



### CONCRETE / ASPHALT MOUNTING

#### Description of the assembly

1. ZANO product
2. Quick-action fastener or chemical anchor
3. Fixed hardened surface e.g. concrete or asphalt
4. Concrete foundation, class C16/20 (top surface concrete 10 cm below paving surface)
5. Stone aggregate substructure
6. Sand ballast (approx. 2 - 4 cm)
7. Ground



### MOUNTING TO CONCRETE FOUNDATION

#### Description of the assembly

1. ZANO product
2. Quick-action fastener or chemical anchor
3. Concrete foundation, class C16/20 (top surface concrete 10 cm below paving surface)
4. Ground