



## OPTIONS

### Construction:

- carbon steel (s235Jr)
- stainless steel (Aisi 304)

### Seat and backrest:

- soft wood
- hardwood of European origin
- hard wood (oil finish)
- premium hard wood

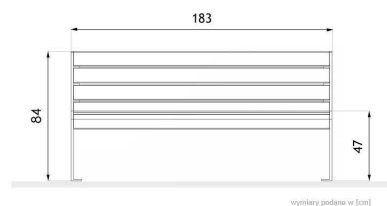
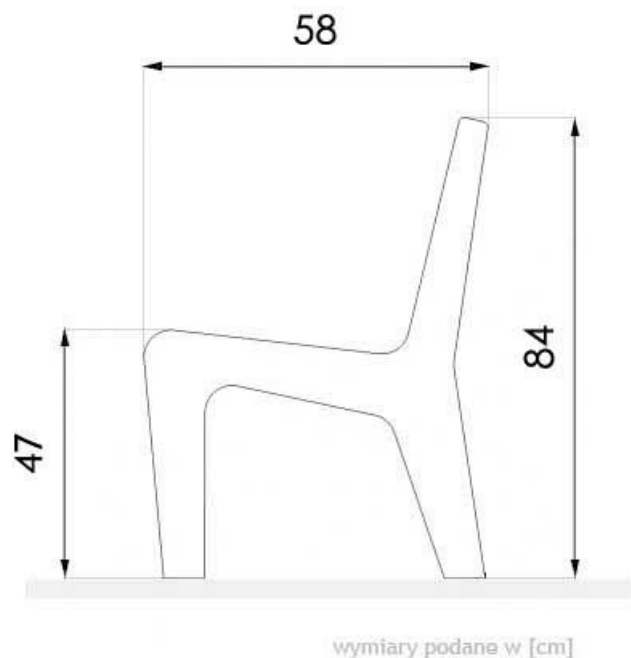
### Methods of installation:

- attached by bolts to foundation

## DESCRIPTION

02.012 Soft Bench is constructed of the finest materials on the market today. They are made to withstand years of use in adverse weather conditions and still maintain their lasting beauty. Stainless steel is perhaps the ultimate material from which to manufacture all steel seats. It is immensely strong, corrosion resistant and has a stunning appearance. bench is an ultra-modern and sleek design of street furniture that creates a symmetry which will enhance and revitalise all towns, parks and public, open spaces. For sure presented **stainless steel bench will be a fantastic investment for your school playground, community center, park playground, church playground or other recreation area.**





## GENERAL TECHNICAL DATA

### Dimensions:

- width: 58 cm
- length: 183 cm
- height: 84 cm

### Weight:

- soft wood: 53 kg
- hardwood of European origin: 60 kg

### Materials:

- carbon steel or stainless steel
- wood

ZANO



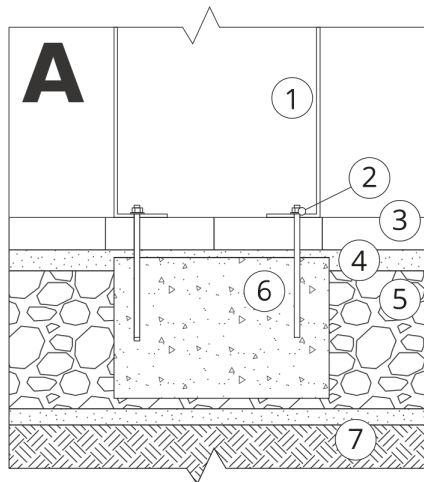
*M. Wełmiński*

Product: Soft Bench  
Catalog number: **02.012**  
Designer:  
Mateusz Wełmiński

In accordance with the Polish Law on Copyright and Related Rights of 04.02.1994 (Official Journal of Laws No. 24, item 83, corrected: Journal of Laws No. 43, item 170) and in accordance with the EU copyright legislation including all EU directives and regulations on copyright, Zano Mirosław Zarotynski Company, reserves the copyright of drawings, descriptions, 3D models, renderings, graphics, content contained in offers, attachments to offers and all other documents. Its content is the intellectual property of ZANO Mirosław Zarotynski company. The use of author's ideas, solutions, copying, distribution of photos, graphics or fragments of graphics, descriptive texts, for profit, without the permission of the author - ZANO Mirosław Zarotynski company - is prohibited and constitutes a copyright infringement and is punishable.

**NOTE:** The drawings do not reflect the actual dimensions of the foundation. They are only exemplary assembly schemes taking into account the type of anchoring and the substrate material to which the furniture is to be fixed.

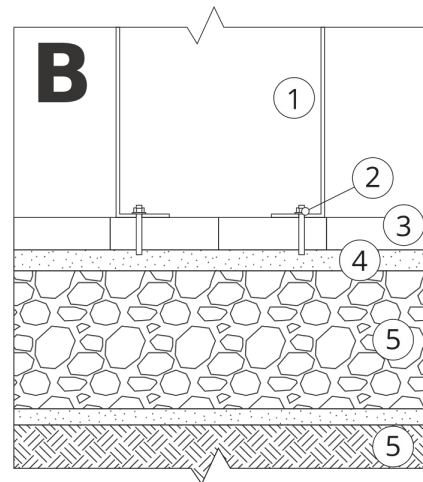
The size of the foundation depends on the local foundation conditions.



### INSTALLATION INTO PAVING WITH FOUNDATION

#### Description of the assembly

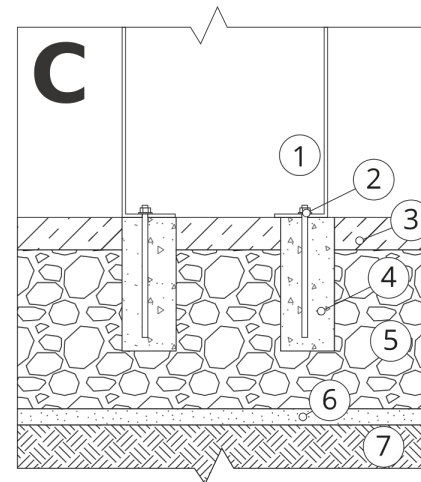
1. ZANO product
2. Quick-action fastener or chemical anchor
3. Stone paving / concrete paving / stone slabs / concrete slabs
4. Sand ballast (approx. 2 - 4 cm)
5. Stone aggregate substructure
6. Concrete foundation, class C16/20 (top surface concrete 10 cm below paving surface)
7. Ground



### INSTALLATION TO PAVING

#### Description of the assembly

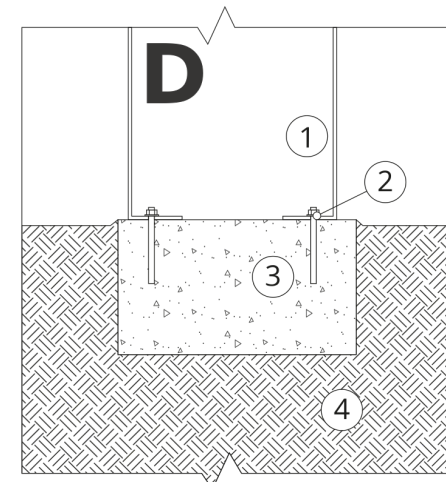
1. ZANO product
2. Quick-action fastener or chemical anchor
3. Stone paving / concrete paving / stone slabs / concrete slabs
4. Sand ballast (approx. 2 - 4 cm)
5. Stone aggregate substructure
6. Ground



### CONCRETE / ASPHALT MOUNTING

#### Description of the assembly

1. ZANO product
2. Quick-action fastener or chemical anchor
3. Fixed hardened surface e.g. concrete or asphalt
4. Concrete foundation, class C16/20 (top surface concrete 10 cm below paving surface)
5. Stone aggregate substructure
6. Sand ballast (approx. 2 - 4 cm)
7. Ground



### MOUNTING TO CONCRETE FOUNDATION

#### Description of the assembly

1. ZANO product
2. Quick-action fastener or chemical anchor
3. Concrete foundation, class C16/20 (top surface concrete 10 cm below paving surface)
4. Ground