

OPTIONS

Construction:

- carbon steel (s235Jr)

Methods of installation:

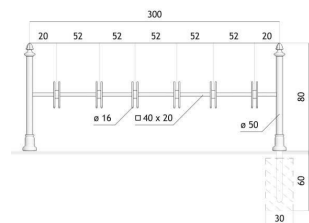
- embedded in concrete

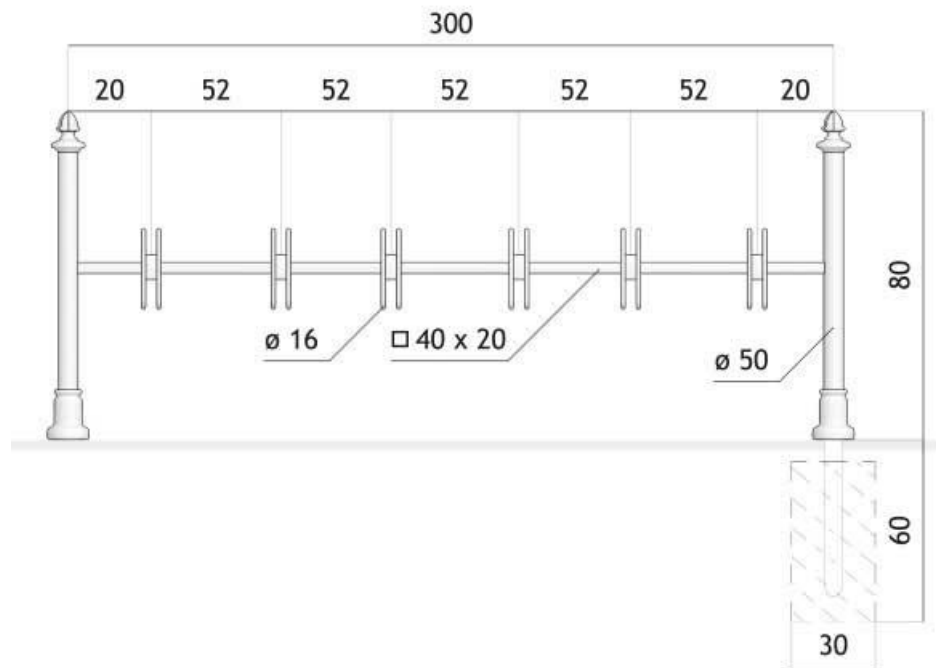
Rack size:

- 8
- 10
- 12
- 14

DESCRIPTION

Bicycle parking needs to be visible, accessible, easy to use, convenient, and plentiful. All of those demands achieve our durable 05.251 bicycle rack. It is absolutely amazing and multifunctional project. First of all it is very aesthetic retro style. It will be perfect for every historical surroundings. The second advantage of Gemini 05.451 bicycle rack is its functionality. It supports the whole bike (not just one wheel) and enable the user to lock the frame and wheels of the bike. What is more, it has a space for even 12 bicycles. Gemini bicycle rack is made of black steel- durable, low maintenance and solid material. Thanks to it presented rack will be surely a long-life product. Bicycle rack designed by ZANO Street Furniture is clearly visible and accessible and it doesn't interfere with pedestrians or other street furniture.





GENERAL TECHNICAL DATA

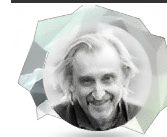
Dimensions:

- width: 30 cm
- length: 300 cm
- height from ground surface: 80 cm
- height with anchoring section: 140 cm

Materials:

- iron castings
- steel tubes
- closed profiles

ZANO



Product:
 Gemini Bicycle Rack
 Catalog number: **05.451**
 Designer: Tomasz Szpytma

In accordance with the Polish Law on Copyright and Related Rights of 04.02.1994 (Official Journal of Laws No. 24, item 83, corrected: Journal of Laws No. 43, item 170) and in accordance with the EU copyright legislation including all EU directives and regulations on copyright, Zano Mirosław Zarotynski Company, reserves the copyright of drawings, descriptions, 3D models, renderings, graphics, content contained in offers, attachments to offers and all other documents. Its content is the intellectual property of ZANO Mirosław Zarotynski company. The use of author's ideas, solutions, copying, distribution of photos, graphics or fragments of graphics, descriptive texts, for profit, without the permission of the author - ZANO Mirosław Zarotynski company - is prohibited and constitutes a copyright infringement and is punishable.

NOTE: The drawings do not reflect the actual dimensions of the foundation. They are only exemplary assembly schemes taking into account the type of anchoring and the substrate material to which the furniture is to be fixed.

The size of the foundation depends on the local foundation conditions.



INSTALLATION INTO PAVING WITH FOUNDATION

Description of the assembly

1. ZANO product
2. Stone paving / concrete paving / stone slabs / concrete slabs
3. Sand ballast (approx. 2 - 4 cm)
4. Concrete foundation, class C16/20 (top surface concrete 10 cm below paving surface)
5. Ground



MOUNTING TO CONCRETE FOUNDATION

Description of the assembly

1. ZANO product
2. Concrete foundation, class C16/20 (top surface concrete 10 cm below paving surface)
3. Ground



MOUNTING TO CONCRETE FOUNDATION

Description of the assembly

1. ZANO product
2. Fixed hardened surface e.g. concrete or asphalt
3. Concrete foundation, class C16/20 (top surface concrete 10 cm below paving surface)
4. Stone aggregate substructure
5. Sand ballast (approx. 2 - 4 cm)
6. Ground