

## GENERAL TECHNICAL DATA

### Dimensions:

- Height: 46 cm
- Width: 120 cm
- Depth: 119 cm

### Weight:

- kg

### Materials:

- stainless or carbon steel
- hardwood or softwood

## DESCRIPTION:

The structure is bent and bolted from 2 mm and 3 mm thick steel sheets made of S235JR carbon steel, galvanized and powder-coated according to the RAL palette, or entirely made of 1.4301 stainless steel with a brushed finish.

The tabletop is made using 24 wooden boards: 2 boards with a cross-section of 45 × 25 mm and a length of 1187 mm, 2 boards with a cross-section of 45 × 80 mm and a length of 1200 mm, and 2 boards with a cross-section of 25 × 67 mm and a length of 1096 mm. The wood is either European softwood, impregnated and lacquered twice, or exotic wood, impregnated and oiled twice.

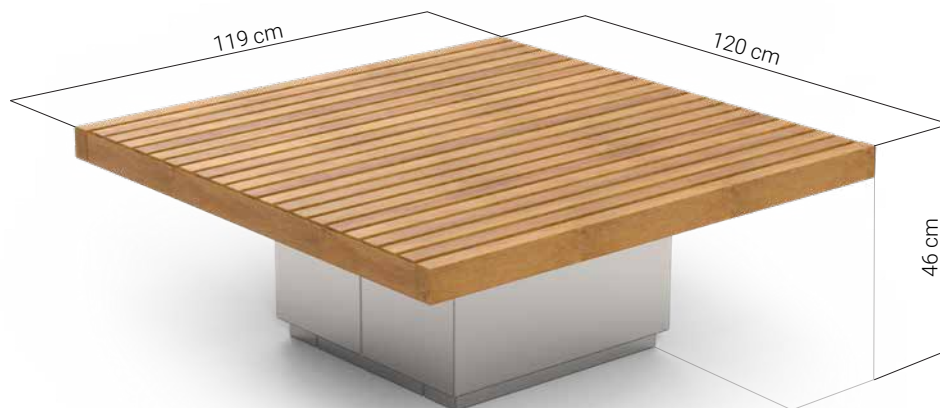
All elements of small architecture must be properly anchored in accordance with the manufacturer's technical instructions. The manufacturer shall not be liable for any damage resulting from careless use or failure to follow the instructions.



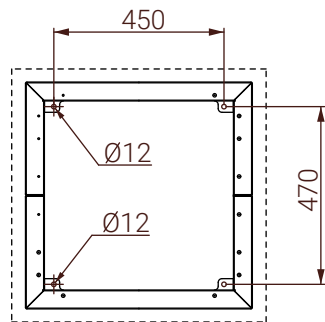
product: Stolik Quadro 13.076.1  
designer: Iwona Żaczek

ZANO Mirosław Zarotyński, in accordance with the Act on Copyright and Related Rights of 04.02.1994 (Journal of Laws 1994 No. 24, item 83, as amended: Journal of Laws 1994 No. 43, item 170), as well as with European Union legislation on copyright protection, including all EU directives and regulations concerning copyright, reserves copyright to drawings, 3D models, renderings, graphics, and the content contained in offers, offer attachments, and other documents – their content constitutes the intellectual property of ZANO Mirosław Zarotyński.

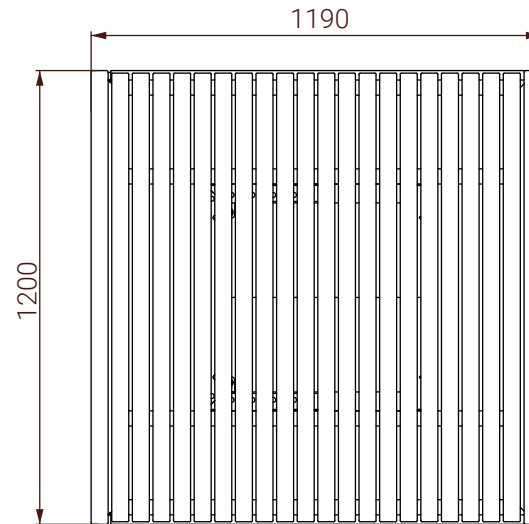
The use of original ideas, solutions, copying, or distributing photographs, fragments of graphics, or description texts for commercial purposes without the author's consent – ZANO Mirosław Zarotyński – is prohibited and constitutes an infringement of copyright and is subject to penalty.



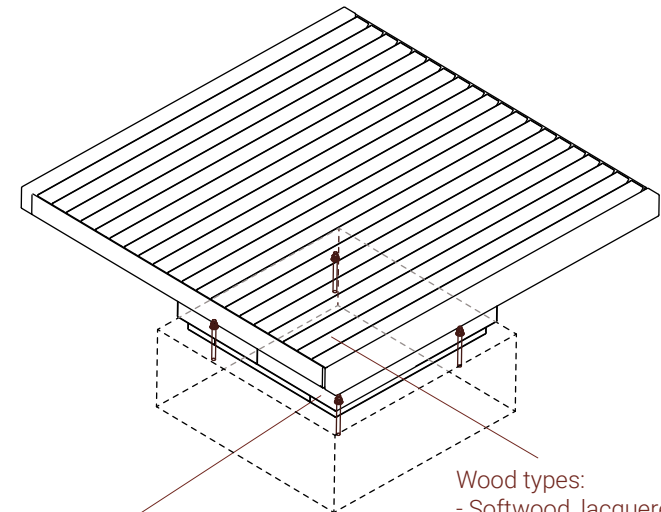
MOUNTING HOLES SPACING



TOP VIEW



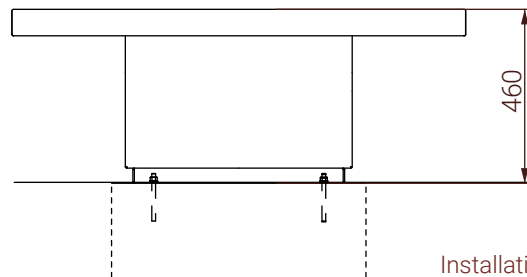
ISOMETRIC VIEW



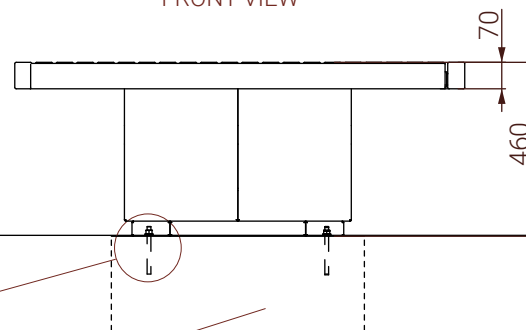
Wood types:  
- Softwood, lacquered  
- Hardwood, oiled

Steel types:  
- Construction steel (S235JR, DC01) galvanized and powder coated according to RAL palette  
- Stainless steel (1.4301) brushed

SIDE VIEW



FRONT VIEW



Ground level

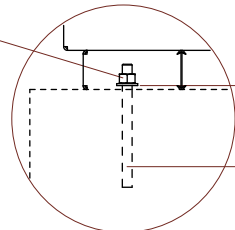
Installation:  
Attached by bolts  
to foundation

Exemplary concrete foundation


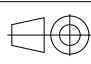
4 x nut  
M10 Din1587

4 x washer  
M10 Din125

4 x threaded rod  
M10 x120 DIN 976-1



dimensions given in [mm]

Quadro table 13.076.1		 <div>ZANO Street Furniture Lindegó 7A, 30-148 Cracow, Poland phone: +48 12 200 20 53 email: office@zano.pl</div>	
<p>ZANO Mirosław Zarotyński, in accordance with the Act on Copyright and Related Rights of 04.02.1994 (Journal of Laws 1994 No. 24, item 83, as amended: Journal of Laws 1994 No. 43, item 170), as well as with European Union legislation on copyright protection, including all EU directives and regulations concerning copyright, reserves copyright to drawings, 3D models, renderings, graphics, and the content contained in offers, offer attachments, and other documents – their content constitutes the intellectual property of ZANO Mirosław Zarotyński.</p> <p>The use of original ideas, solutions, copying, or distributing photographs, fragments of graphics, or description texts for commercial purposes without the author's consent – ZANO Mirosław Zarotyński – is prohibited and constitutes an infringement of copyright and is subject to penalty.</p>		serial number:	060825-v1
sheet:	A4		
scale:	1:20		
weight:			