



GENERAL TECHNICAL DATA

dimensions:

- height: 17.72in
- width: 72.05in
- depth: 19.29in

weight:

- using softwood: 138.9lb
- using hardwood: 158.7lb

materials:

- softwood or hardwood
- stainless or carbon steel

DESCRIPTION:

Welded structure connected with wooden planks. Weld structure of 0.3150in and 0.1575in thick steel sheets, carbon steel s235Jr galvanized and powder coated according to RAL palette or all stainless steel AISI 304SS brushed. Seat using seven wooden planks including five of 1.496in x 3.346in section and 70.87in length and two of 1.496in x 1.496in section and 70.87in length. European coniferous wood impregnated and varnished twice or exotic wood impregnated and oiled twice.

All street furniture elements must be properly anchored according to the manufacturer's technical instructions. The manufacturer is not liable for damage caused by negligent use or failure to follow instructions.

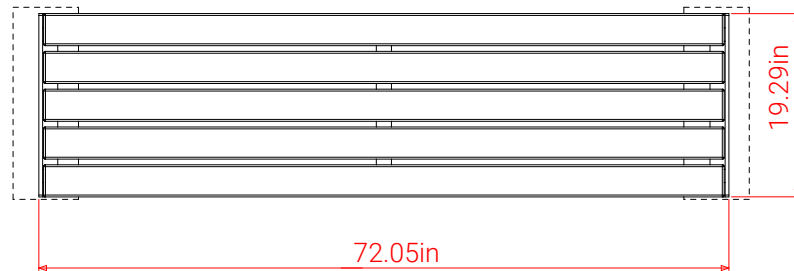


M. Wełmiński

product:
Simple bench
02.424
designer: M. Wełmiński

In accordance with the Polish Law on Copyright and Related Rights of 04.02.1994 (Official Journal of Laws No. 24, item 83, corrected: Journal of Laws No. 43, item 170) and in accordance with the EU copyright legislation including all EU directives and regulations on copyright, Zano Miroslaw Zarotyński Company, reserves the copyright of drawings, descriptions, 3D models, renderings, graphics, content contained in offers, attachments to offers and all other documents. Its content is the intellectual property of ZANO Miroslaw Zarotyński company. The use of author's ideas, solutions, copying, distribution of photos, graphics or fragments of graphics, descriptive texts, for profit, without the permission of the author - ZANO Miroslaw Zarotyński company - is prohibited and constitutes a copyright infringement and is punishable.

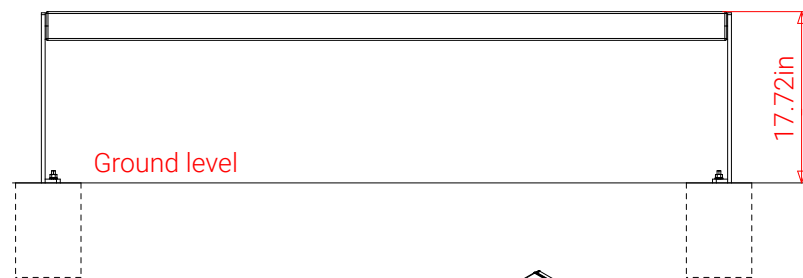
TOP VIEW



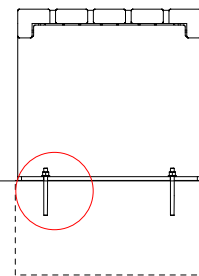
MOUNTING HOLES SPACING



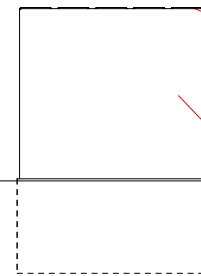
FRONT VIEW



VERTICAL SECTION



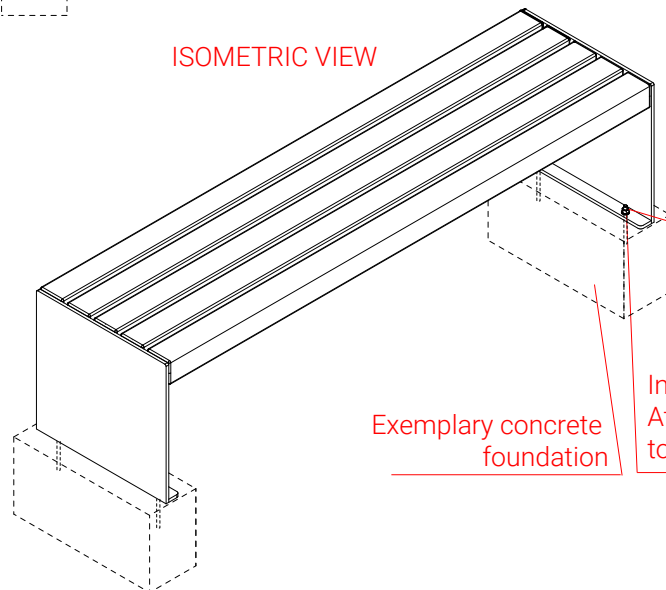
SIDE VIEW



Wood types:
 - softwood, lacquered
 - Hardwood, oiled

Steel types:
 - Construction steel (S235JR, DC01) galvanized and powder coated according to RAL palette
 - Stainless steel (1.4301) brushed

ISOMETRIC VIEW



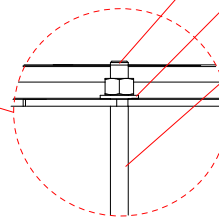
Exemplary concrete foundation

Installation:
 Attached by bolts to foundation

4 x Nut M10 DIN1587

4 x Washer
 M10 DIN 125

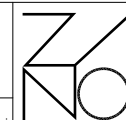
4 x Threaded rod
 M10x125 DIN 976-1



Dimensions given in [inches]

Simple bench
 02.424

In accordance with the Polish Law on Copyright and Related Rights of 04.02.1994 (Official Journal of Laws No. 24, item 83, corrected: Journal of Laws No. 43, item 170) and in accordance with the EU copyright legislation including all EU directives and regulations on copyright, Zano Mirosław Zarotyński Company, reserves the copyright of drawings, descriptions, 3D models, renderings, graphics, content contained in offers, attachments to offers and all other documents. Its content is the intellectual property of ZANO Mirosław Zarotyński company. The use of author's ideas, solutions, copying, distribution of photos, graphics or fragments of graphics, descriptive texts, for profit, without the permission of the author - ZANO Mirosław Zarotyński company - is prohibited and constitutes a copyright infringement and is punishable.



ZANO Street Furniture
 Lindego 7A, 30-148
 Cracow, Poland

phone: +48 12 200 20 53
 email: office@zano.pl

Number: 250523-V1

Sheet: A4

Scale: 1:20



Mass: using softwood: 138.9lb
 using hardwood: 158.7lb