



## GENERAL TECHNICAL DATA

### dimensions:

- height: 29 17/32"
- width: 23 5/8"
- depth: 23 5/8"

### weight:

- 103 lb

### materials:

- stainless or carbon steel

## DESCRIPTION:

Riveted structure made of bent steel sheets, 2 mm thick of carbon steel ASTM A36 galvanized and powder coated according to RAL palette RAL or entirely of stainless steel AISI 304SS ground. The flower pot has four wooden planks with a section of 1 37/64" x 1 31/32" mm and a length of 29 19/64" mm. One drainage hole has been created in the bottom of the pot for drainage of water. It is recommended to pad the pot with foil and, in the case of outdoor use insulating the pot with styrofoam. As standard the pot does not have a steel insert.

All landscaping elements must be properly anchored in accordance with the manufacturer's technical instructions manufacturer's technical instructions. The manufacturer is not responsible responsible for damage caused by careless use or failure to follow instructions instructions.

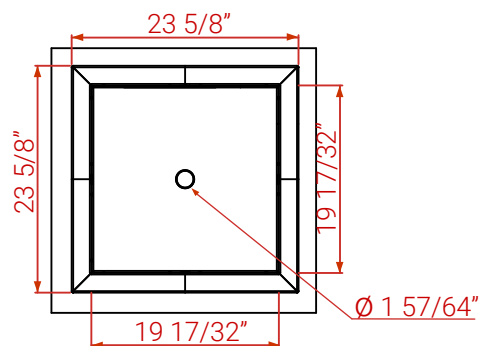


*M. Wełmiński*

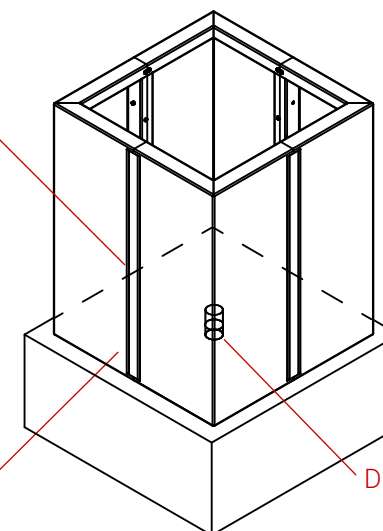
product:  
Planters Agawa  
06.020.1.M  
designer: Michał  
Wełmiński

In accordance with the Polish Law on Copyright and Related Rights of 04.02.1994 (Official Journal of Laws No. 24, item 83, corrected: Journal of Laws No. 43, item 170) and in accordance with the EU copyright legislation including all EU directives and regulations on copyright, Zano Miroslaw Zarotynski Company, reserves the copyright of drawings, descriptions, 3D models, renderings, graphics, content contained in offers, attachments to offers and all other documents. Its content is the intellectual property of ZANO Miroslaw Zarotynski company. The use of author's ideas, solutions, copying, distribution of photos, graphics or fragments of graphics, descriptive texts, for profit, without the permission of the author - ZANO Miroslaw Zarotynski company - is prohibited and constitutes a copyright infringement and is punishable.

TOP VIEW

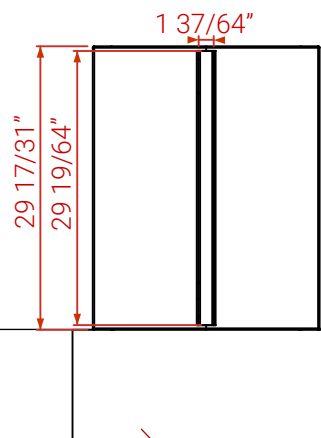


ISOMETRIC VIEW

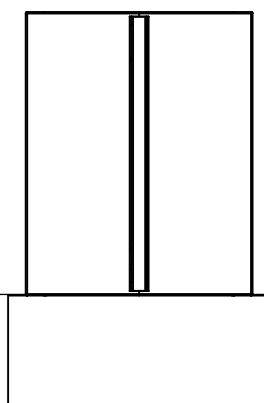


Wood types:  
 - Softwood, lacquered  
 - Hardwood, oiled

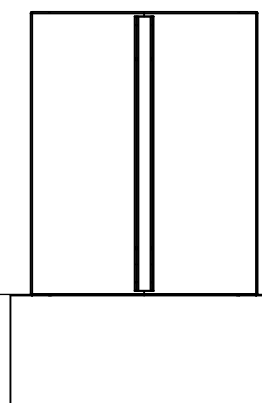
FRONT VIEW



BACK VIEW



SIDE VIEW



Steel types:  
 - Carbon steel ASTM A36 galvanized and powder coated according to RAL palette  
 - Stainless steel AISI 304SS brushed

Exemplary concrete foundation

Ground level

Dimensions given in [in]

Planters Agawa 06.020.1.M

In accordance with the Polish Law on Copyright and Related Rights of 04.02.1994 (Official Journal of Laws No. 24, Item 83, corrected: Journal of Laws No. 43, Item 170) and in accordance with the EU copyright legislation including all EU directives and regulations on copyright, Zano Miroslaw Zarolynski Company, reserves the copyright of drawings, descriptions, 3D models, renderings, graphics, content contained in offers, attachments to offers and all other documents. Its content is the intellectual property of ZANO Miroslaw Zarolynski company. The use of author's ideas, solutions, copying, distribution of photos, graphics or fragments of graphics, descriptive texts, for profit, without the permission of the author - ZANO Miroslaw Zarolynski company - is prohibited and constitutes a copyright infringement and is punishable.



ZANO Street Furniture  
 Lindego 7A, 30-148  
 Cracow, Poland  
 phone: +48 12 200 20 53  
 email: office@zano.pl

Number: 260722-V1

Sheet:

A4

Scale:

1:20

Weight:

103 lb

