

GENERAL TECHNICAL DATA

dimensions:

- height: 75 cm
- width: 60 cm
- width: 60 cm

weight:

- 47 kg

materials:

- stainless or carbon steel

DESCRIPTION:

Riveted structure made of bent steel sheets, 2 mm thick of carbon steel s235Jr galvanized and powder coated according to RAL palette RAL or entirely of stainless steel 1.4301 ground. One drainage hole has been created in the bottom of the pot for drainage of water. It is recommended to pad the pot with foil and, in the case of outdoor use insulating the pot with styrofoam. As standard the pot does not have a steel insert.

All landscaping elements must be properly anchored in accordance with the manufacturer's technical instructions manufacturer's technical instructions. The manufacturer is not responsible for damage caused by careless use or failure to follow instructions instructions.

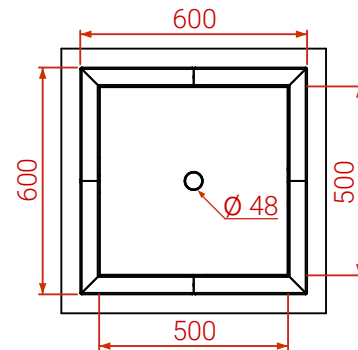


M. Welmiński

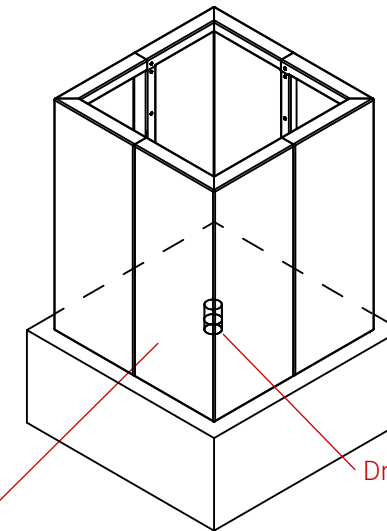
product:
Planters Agawa
06.020.M
designer: Michał
Welmiński

In accordance with the Polish Law on Copyright and Related Rights of 04.02.1994 (Official Journal of Laws No. 24, item 83, corrected: Journal of Laws No. 43, item 170) and in accordance with the EU copyright legislation including all EU directives and regulations on copyright, Zano Miroslaw Zarotyrski Company, reserves the copyright of drawings, descriptions, 3D models, renderings, graphics, content contained in offers, attachments to offers and all other documents. Its content is the intellectual property of ZANO Miroslaw Zarotyrski company. The use of author's ideas, solutions, copying, distribution of photos, graphics or fragments of graphics, descriptive texts, for profit, without the permission of the author - ZANO Miroslaw Zarotyrski company - is prohibited and constitutes a copyright infringement and is punishable.

TOP VIEW



ISOMETRIC VIEW

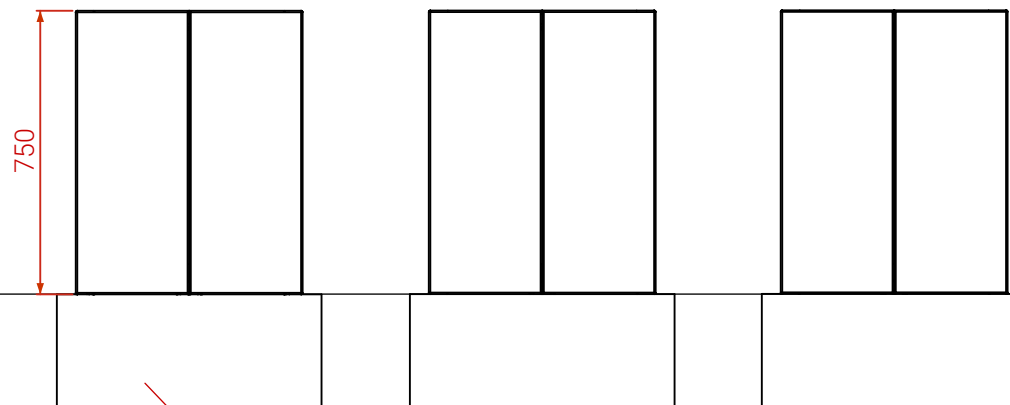


Drainage hole

FRONT VIEW

BACK VIEW

SIDE VIEW



Exemplary concrete foundation

Steel types:

- Construction steel (S235JR, DC01) galvanized and powder coated according to RAL palette
- Stainless steel (1.4301) brushed

Ground level

Dimensions given in [mm]

Planters Agawa 06.020.M



ZANO Street Furniture
Lindego 7A, 30-148
Cracow, Poland

phone: +48 12 200 20 53
email: office@zano.pl

In accordance with the Polish Law on Copyright and Related Rights of 04.02.1994 (Official Journal of Laws No. 24, item 83, corrected: Journal of Laws No. 43, item 170) and in accordance with the EU copyright legislation including all EU directives and regulations on copyright, Zano Miroslaw Zarotylfeld Company, reserves the copyright of drawings, descriptions, 3D models, renderings, graphics, content contained in offers, attachments to offers and all other documents. Its content is the intellectual property of ZANO Miroslaw Zarotylfeld company. The use of author's ideas, solutions, copying, distribution of photos, graphics or fragments of graphics, descriptive texts, for profit, without the permission of the author - ZANO Miroslaw Zarotylfeld company - is prohibited and constitutes a copyright infringement and is punishable.

Number: 260722-V1

Sheet: A4

Scale: 1:20

Weight: 47 kg

