

GENERAL TECHNICAL DATA

dimensions:

- height: 35 5/16 inches
- width: 11 13/16 inches
- depth: 7 11/16 inches

- weight:**
- with softwood 37 lb
 - with hardwood 39 lb

- materials:**
- stainless or carbon steel
 - softwood or hardwood

DESCRIPTION

Welded structure, combined with a wooden seat. Welded $0 \frac{5}{16}$ " thick steel plate construction, made of carbon steel ASTM A36 galvanized and powder-coated according to RAL palette or entirely of stainless steel AISI 304SS ground.

The wooden stool is made of 6 wooden planks, $1 \frac{47}{64}$ " thick. The seat can be made of softwood impregnated and varnished twice or of hardwood impregnated and oiled twice.

All items of street furniture must be properly anchored according to the manufacturer's technical instructions. The manufacturer is not liable for damage caused by negligent use or failure to follow instructions.



PROJEKTANT

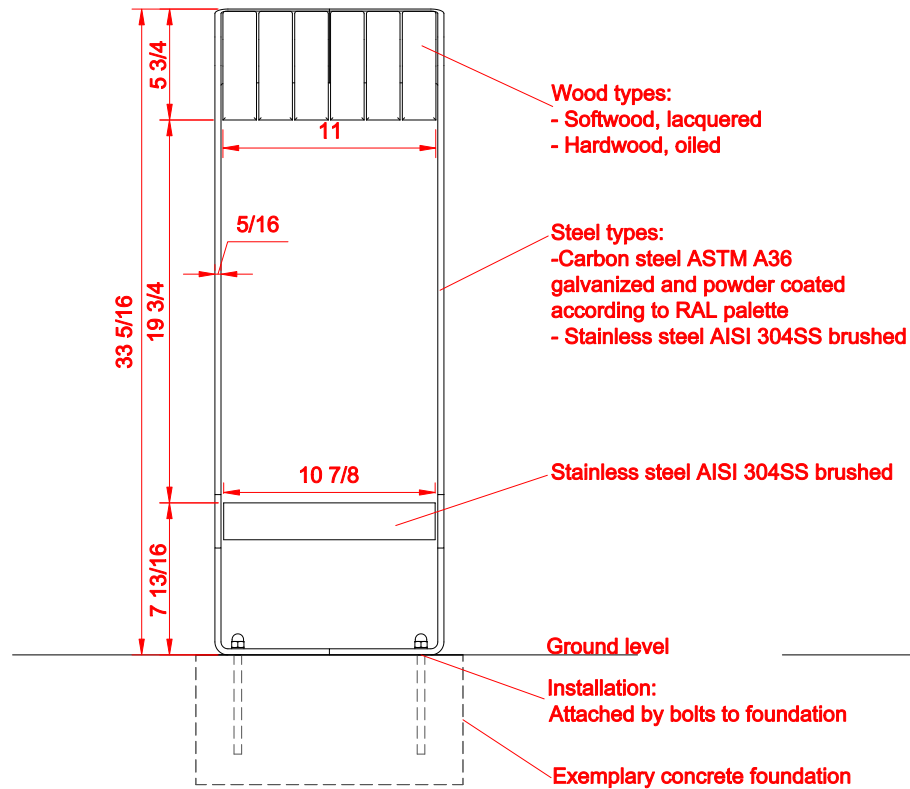
product: Reliq stool 17.001

version: 1

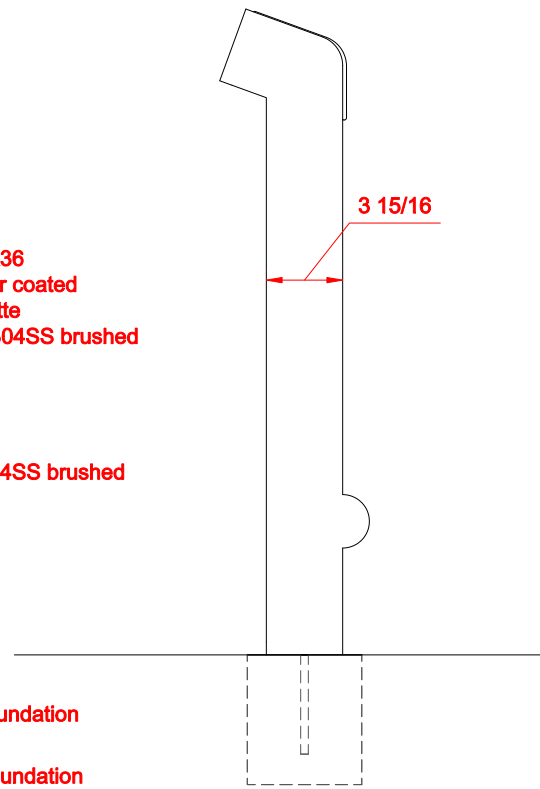
designer: Michał Gzela

In accordance with the Polish Law on Copyright and Related Rights of 04.02.1994 (Official Journal of Laws No. 24, item 83, corrected: Journal of Laws No. 43, item 170) and in accordance with the EU copyright legislation including all EU directives and regulations on copyright, Zano Mirosław Zarotyński Company, reserves the copyright of drawings, descriptions, 3D models, renderings, graphics, content contained in offers, attachments to offers and all other documents. Its content is the intellectual property of ZANO Mirosław Zarotyński company. The use of author's ideas, solutions, copying, distribution of photos, graphics or fragments of graphics, descriptive texts, for profit, without the permission of the author - ZANO Mirosław Zarotyński company - is prohibited and constitutes a copyright infringement and is punishable.

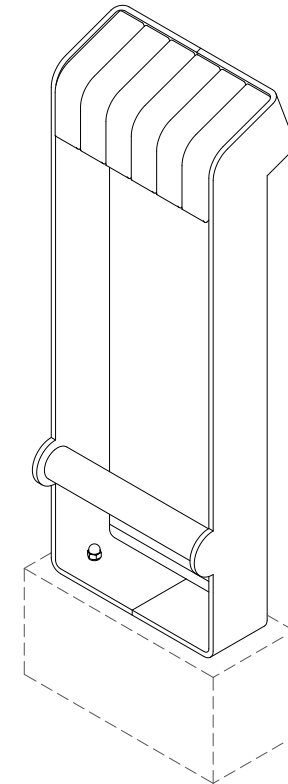
FRONT VIEW



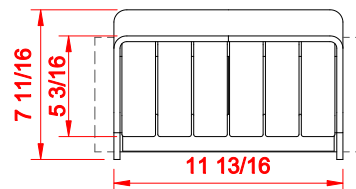
SIDE VIEW



ISOMETRIC VIEW



TOP VIEW

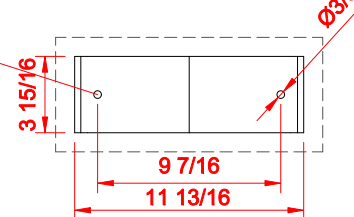


2x Nut
M8 DIN1587

2x Washer
M8 DIN125

2x Threaded rod
M8x150 DIN976-1

MOUNTING HOLES SPACING



Dimensions given in [inches]

Reliq Stool 17.001

In accordance with the Polish Law on Copyright and Related Rights of 04.02.1994 (Official Journal of Laws No. 24, Item 83, corrected: Journal of Laws No. 43, Item 170) and in accordance with the EU copyright legislation including all EU directives and regulations on copyright, Zano Miroslaw Zarotyński Company, reserves the copyright of drawings, descriptions, 3D models, renderings, graphics, content contained in offers, attachments to offers and all other documents. Its content is the intellectual property of ZANO Miroslaw Zarotyński company. The use of author's ideas, solutions, copying, distribution of photos, graphics or fragments of graphics, descriptive texts, for profit, without the permission of the author - ZANO Miroslaw Zarotyński company - is prohibited and constitutes a copyright infringement and is punishable.



ZANO Street Furniture
Lindegó 7A, 30-148
Cracow, Poland
phone: +48 12 200 20 53
email: office@zano.pl

Number:	160117-v1		
Sheet:	A4		
Scale:	1:10		
Mass:	with soft wood	37 lb	
	with hard wood	39 lb	