**GENERAL TECHNICAL DATA:****dimensions:**

- height: 17 23/32"
- width: 106 21/32"
- depth: 17 23/32"

weight:

- 71 kg

materials:

- powder coated cast iron according to RAL palette or stainless steel brushed
- hardwood or softwood

DESCRIPTION:

Bended welded structure made of 5/64 - 5/32" thick steel sheets of carbon steel s235Jr galvanized and powder coated according to RAL or stainless steel combined with wooden planks. Seat of the bench using wooden benches with rectangular cross section of 1 1/2 x 4 9/64" and 70 55/64" long. European coniferous wood impregnated and varnished twice or exotic wood impregnated and oiled twice. Bench model combined with two pots made of carbon steel s235Jr galvanized and powder coated according to RAL or stainless steel. In the bottoms of the pots there is one drainage hole for water drainage. It is recommended to line the pot with foil and, in the case of outdoor use, insulate the pot with polystyrene foam.

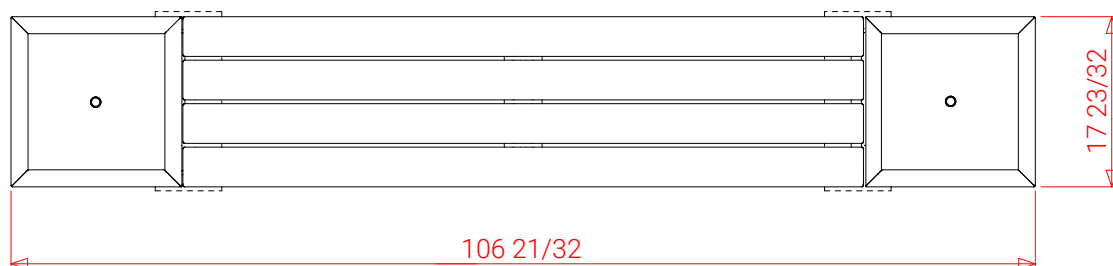
All street furniture elements must be properly anchored according to the manufacturer's technical instructions. The manufacturer is not liable for damage caused by negligent use or failure to follow instructions.



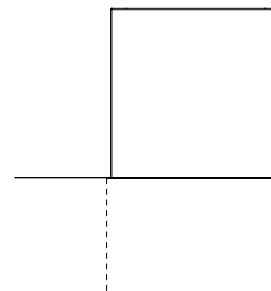
Product: Flora Bench 02.427

In accordance with the Polish Law on Copyright and Related Rights of 04.02.1994 (Official Journal of Laws No. 24, item 83, corrected: Journal of Laws No. 43, item 170) and in accordance with the EU copyright legislation including all EU directives and regulations on copyright, Zano Mirosław Zarotynski Company, reserves the copyright of drawings, descriptions, 3D models, renderings, graphics, content contained in offers, attachments to offers and all other documents. Its content is the intellectual property of ZANO Mirosław Zarotynski company. The use of author's ideas, solutions, copying, distribution of photos, graphics or fragments of graphics, descriptive texts, for profit, without the permission of the author - ZANO Mirosław Zarotynski company - is prohibited and constitutes a copyright infringement and is punishable.

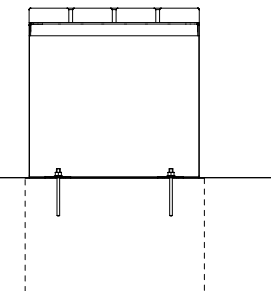
TOP VIEW



SIDE VIEW



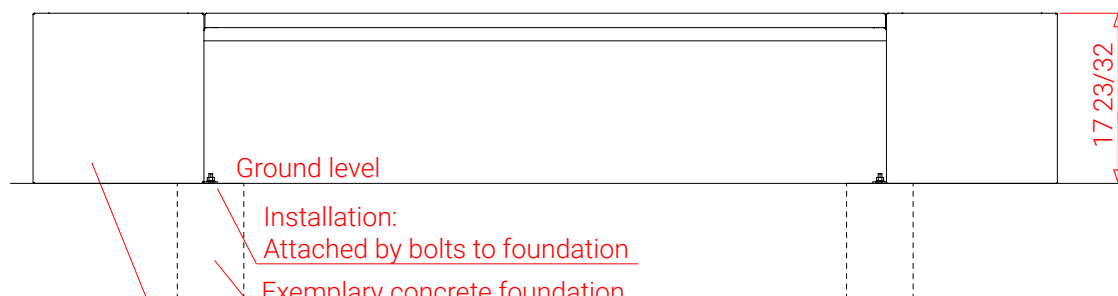
CROSS SECTION



MOUNTING HOLES SPACING



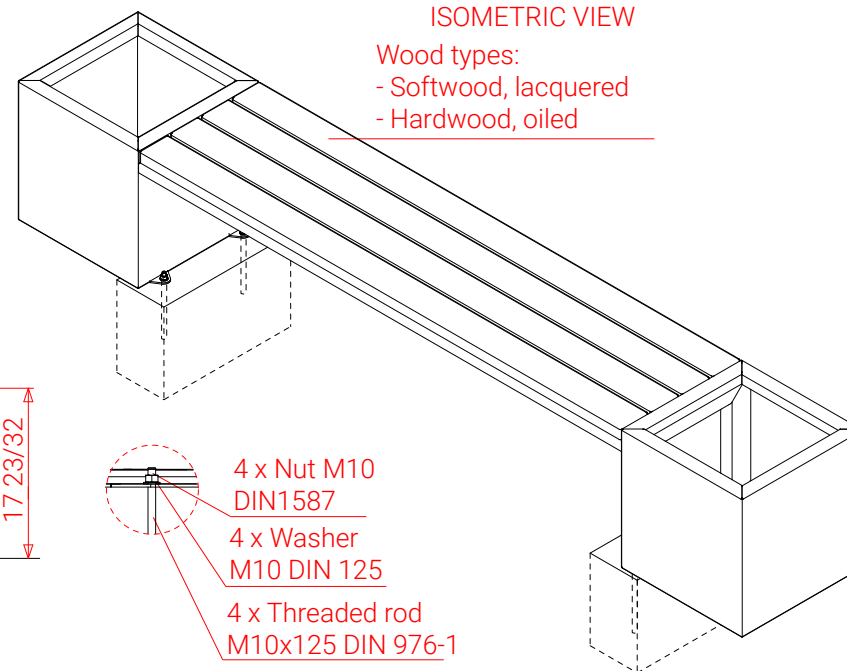
FRONT VIEW



Steel types:

- Construction steel (S235JR, DC01) galvanized and powder coated according to RAL palette
- Stainless steel (1.4301) brushed

ISOMETRIC VIEW



Dimensions give in [inches]

Flora Bench
02.427

In accordance with the Polish Law on Copyright and Related Rights of 04.02.1994 (Official Journal of Laws No. 24, item 83, corrected: Journal of Laws No. 43, item 170) and in accordance with the EU copyright legislation including all EU directives and regulations on copyright, Zano Mirosław Zarotyński Company, reserves the copyright of drawings, descriptions, 3D models, renderings, graphics, content contained in offers, attachments to offers and all other documents. Its content is the intellectual property of ZANO Mirosław Zarotyński company. The use of author's ideas, solutions, copying, distribution of photos, graphics or fragments of graphics, descriptive texts, for profit, without the permission of the author - ZANO Mirosław Zarotyński company - is prohibited and constitutes a copyright infringement and is punishable.

ZANO Street Furniture
Lindegó 7A, 30-148
Cracow, Polandphone: +48 12 200 20 53
email: office@zano.pl

Number: 281022-V1

Sheet: A4

Scale: 1:20

Mass: 71 kg