

GENERAL TECHNICAL DATA

dimensions:

- height: 77 cm
- width: 164 cm
- depth: 164 cm

weight:

- with softwood 114 kg
- with hardwood 131 kg

materials:

- carbon or stainless steel
- softwood or hardwood

DESCRIPTION

Welded structure combined with wooden planks. Welded 8 mm thick steel sheet structure, made of carbon steel s235Jr galvanised and powder-coated according to RAL palette, or entirely of stainless steel 1.4301 ground. Table top using 36 wooden planks of rectangular cross-section at the widest point 133 × 55 × 38 mm (trapezoid), length 473 mm. Softwood impregnated and varnished twice, and hardwood impregnated and oiled twice. All items of street furniture must be properly anchored according to the manufacturer's technical instructions. The manufacturer is not liable for damage caused by negligent use or failure to follow instructions.

ZANO
SINCE 1990



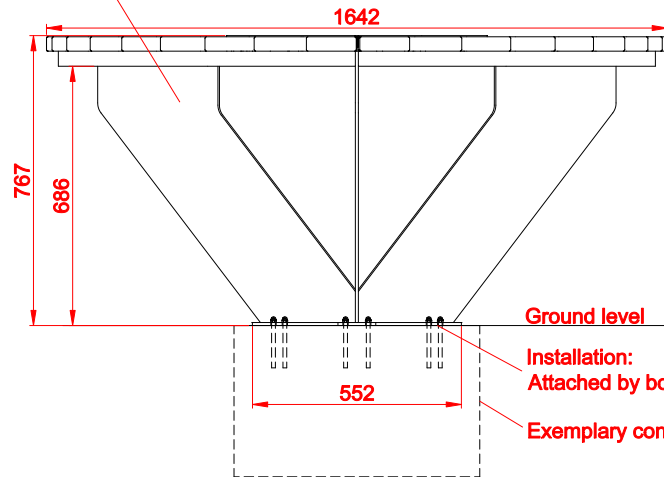
product:
Table DOMINO 13.440.1
designer: Iwona Pieczara
version: 1

In accordance with the Polish Law on Copyright and Related Rights of 04.02.1994 (Official Journal of Laws No. 24, item 83, corrected: Journal of Laws No. 43, item 170) and in accordance with the EU copyright legislation including all EU directives and regulations on copyright, Zano Mirosław Zarotyński Company, reserves the copyright of drawings, descriptions, 3D models, renderings, graphics, content contained in offers, attachments to offers and all other documents. Its content is the intellectual property of ZANO Mirosław Zarotyński company. The use of author's ideas, solutions, copying, distribution of photos, graphics or fragments of graphics, descriptive texts, for profit, without the permission of the author - ZANO Mirosław Zarotyński company - is prohibited and constitutes a copyright infringement and is punishable.

Steel types:

- Construction steel (S235JR, DC01) galvanized and powder coated according to RAL palette
- Stainless steel (1.4301) brushed

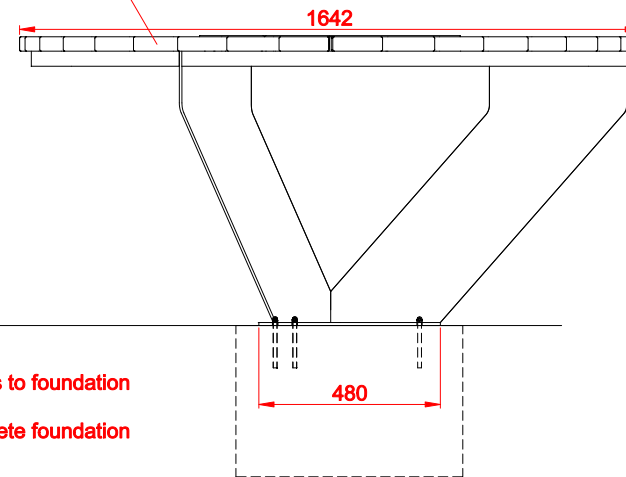
FRONT VIEW



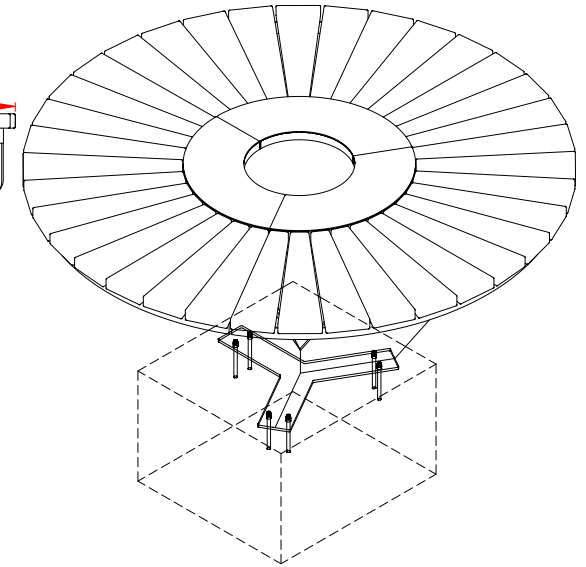
SIDE VIEW

Wood types:

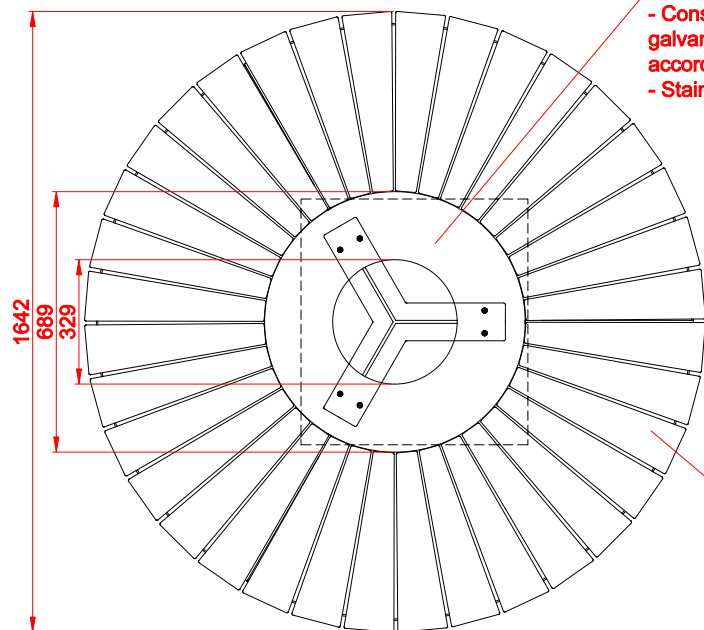
- Soft wood, lacquered
- Hard wood, oiled



ISOMETRIC VIEW



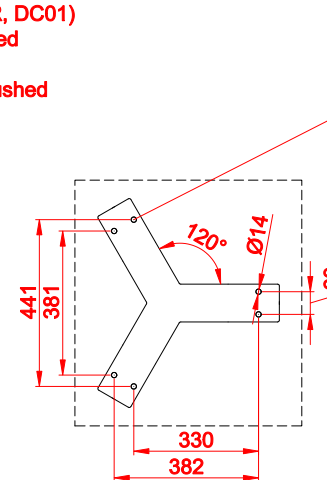
TOP VIEW



Steel types:

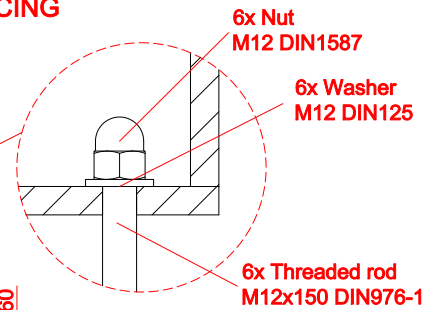
- Construction steel (S235JR, DC01) galvanized and powder coated according to RAL palette
- Stainless steel (1.4301) brushed

MOUNTING HOLES SPACING



Wood types:

- Soft wood, lacquered
- Hard wood, oiled



Dimensions given in [mm]

Domino Table 13.440.1

In accordance with the Polish Law on Copyright and Related Rights of 04.02.1994 (Official Journal of Laws No. 24, item 83, corrected; Journal of Laws No. 43, item 170) and in accordance with the EU copyright legislation including all EU directives and regulations on copyright, Zano Mirosław Zarotyński Company, reserves the copyright of drawings, descriptions, 3D models, renderings, graphics, content contained in offers, attachments to offers and all other documents. Its content is the intellectual property of ZANO Mirosław Zarotyński company. The use of author's ideas, solutions, copying, distribution of photos, graphics or fragments of graphics, descriptive texts, for profit, without the permission of the author - ZANO Mirosław Zarotyński company - is prohibited and constitutes a copyright infringement and is punishable.



ZANO Street Furniture
Lindegó 7A, 30-148
Cracow, Poland

phone: +48 12 200 20 53
email: office@zano.pl

Number:	191120-v1	
Sheet:	A4	
Scale:	1:20	
Mass:	with soft wood	114 kg
	with hard wood	131 kg