

## GENERAL TECHNICAL DATA

**dimensions:** - height: 77 cm  
 - seat height: 45 cm  
 - width: 280 cm  
 - depth: 280 cm

**weight:** - with softwood: 225 kg  
 - with hardwood: 338 kg

**materials:** - stainless or carbon steel  
 - hardwood or softwood

## DESCRIPTION

Welded structure connected to wooden planks by joints. Welded construction of steel pipes with a diameter of 48 mm, made of carbon steel s235Jr galvanised and powder-coated according to RAL palette or entirely of stainless steel 1.4301 ground.

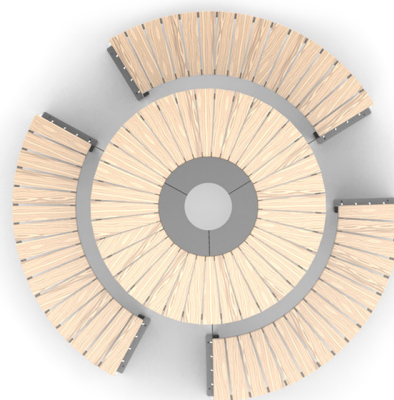
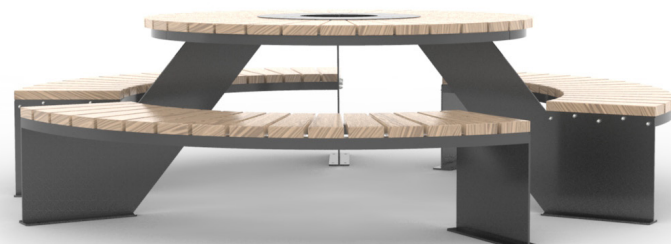
Table top using 3 wooden boards of rectangular cross-section at the widest point 1180 × 120 × 38 mm and 3 boards of cross-section 873 × 95 × 38 mm. Seat of the table using 3 wooden planks of rectangular cross-section at the widest point 971 × 82 × 38 mm and 3 planks of cross-section 879 × 95 × 38 mm. Softwood impregnated and varnished twice or hardwood impregnated and oiled twice.

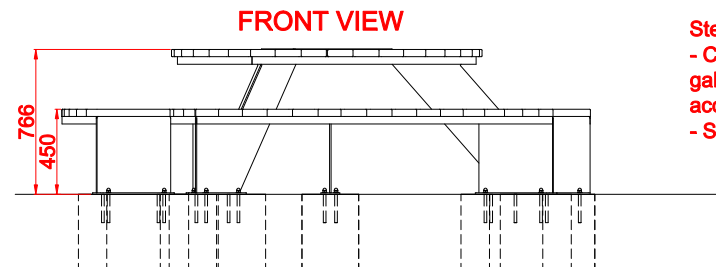
All items of street furniture must be properly anchored according to the manufacturer's technical instructions. The manufacturer is not liable for damage caused by negligent use or failure to follow instructions.



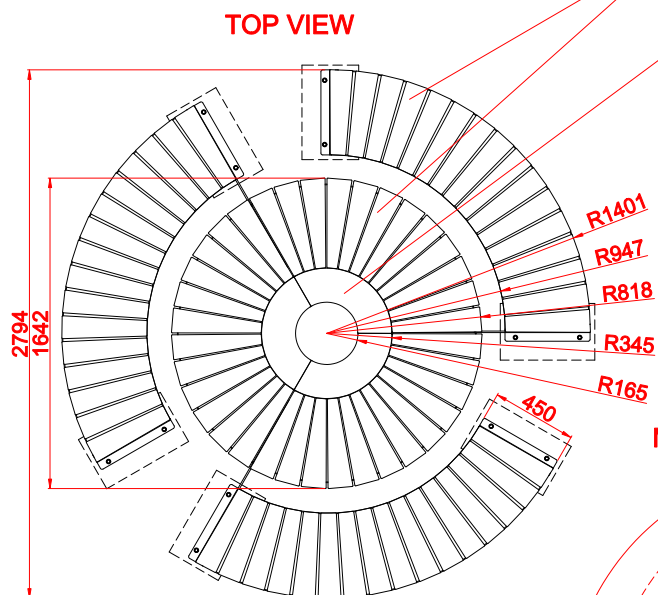
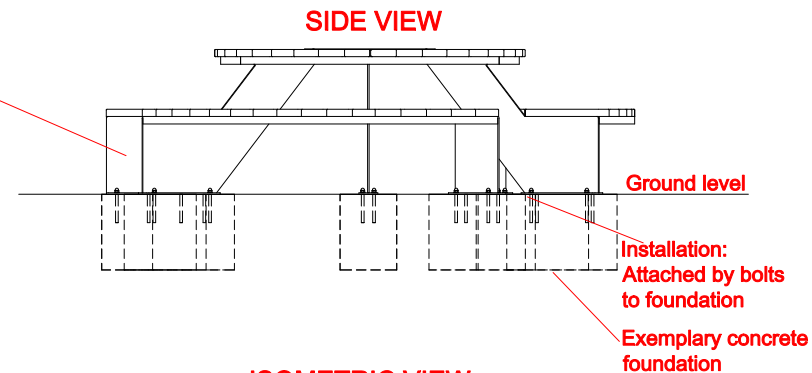
product:  
 Domino picnic table 13.440  
 version: 1  
 designer: Filip Babiarz

In accordance with the Polish Law on Copyright and Related Rights of 04.02.1994 (Official Journal of Laws No. 24, item 83, corrected: Journal of Laws No. 43, item 170) and in accordance with the EU copyright legislation including all EU directives and regulations on copyright, Zano Mirosław Zarotyński Company, reserves the copyright of drawings, descriptions, 3D models, renderings, graphics, content contained in offers, attachments to offers and all other documents. Its content is the intellectual property of ZANO Mirosław Zarotyński company. The use of author's ideas, solutions, copying, distribution of photos, graphics or fragments of graphics, descriptive texts, for profit, without the permission of the author - ZANO Mirosław Zarotyński company - is prohibited and constitutes a copyright infringement and is punishable.



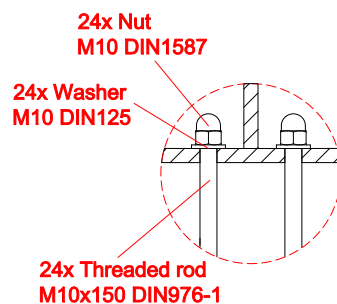
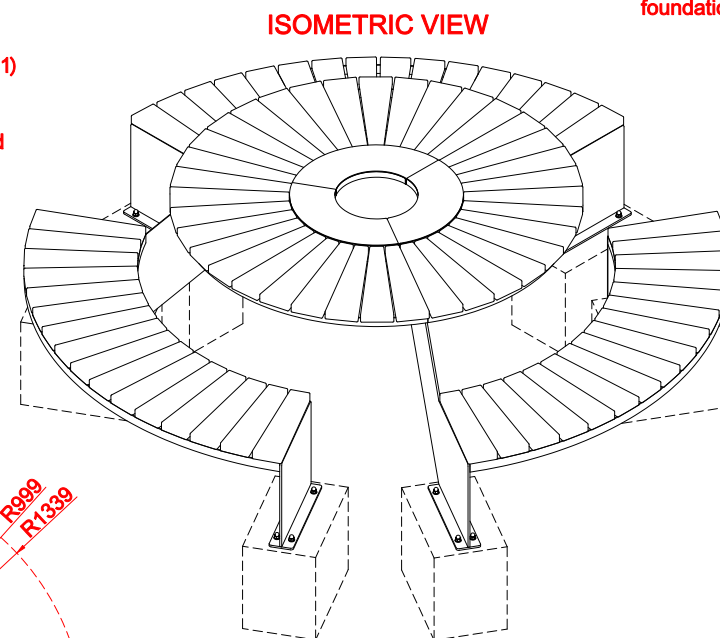


**Steel types:**  
 - Construction steel ( S235JR, DC01)  
 galvanized and powder coated  
 according to RAL palette  
 - Stainless steel ( 1.4301) brushed

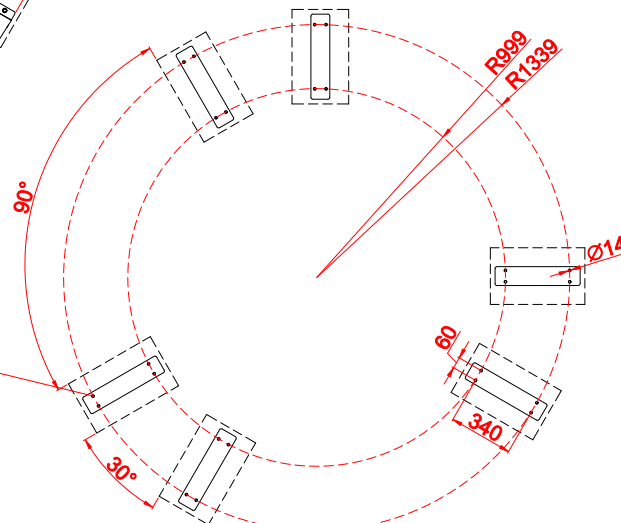


**Wood types:**  
 - Soft wood, lacquered  
 - Hard wood, oiled

**Steel types:**  
 - Construction steel ( S235JR, DC01)  
 galvanized and powder coated  
 according to RAL palette  
 - Stainless steel ( 1.4301) brushed



**MOUNTING HOLES SPACING**



Dimensions given in [mm]

**Domino Picnic Table**  
13.440

In accordance with the Polish Law on Copyright and Related Rights of 04.02.1994 (Official Journal of Laws No. 24, Item 63, corrected: Journal of Laws No. 43, Item 170) and in accordance with the EU copyright legislation including all EU directives and regulations on copyright, Zano Mirosław Zarotyński Company, reserves the copyright of drawings, descriptions, 3D models, renderings, graphics, content contained in offers, attachments to offers and all other documents. Its content is the intellectual property of ZANO Mirosław Zarotyński company. The use of author's ideas, solutions, copying, distribution of photos, graphics or fragments of graphics, descriptive texts, for profit, without the permission of the author - ZANO Mirosław Zarotyński company - is prohibited and constitutes a copyright infringement and is punishable.



ZANO Street Furniture  
 Lindego 7A, 30-148  
 Cracow, Poland

phone: +48 12 200 20 53  
 email: office@zano.pl

Number: 300919-v1

Sheet: A4

Scale: 1:40

Mass: with soft wood 255 kg  
 with hard wood 338 kg