

GENERAL TECHNICAL DATA

dimensions:

- height: 43 cm
- width: 64 cm
- depth: 64 cm

weight: - using softwood 30 kg
- using hardwood 34 kg

materials: - stainless or carbon steel
- hardwood or softwood

DESCRIPTION

Welded structure combined with wooden planks. Welded 3mm thick steel sheet structure made of carbon steel s235Jr galvanised and powder coated to RAL palette, or entirely of stainless steel 1.4301 polished. Bench seating using 6 wooden planks with a rectangular cross-section of 38 x 80mm and varying in length from 480mm to 620mm. Softwood impregnated and varnished twice or hardwood impregnated and oiled twice.

All items of street furniture must be properly anchored according to the manufacturer's technical instructions. The manufacturer is not liable for damage caused by negligent use or failure to follow instructions.

ZANO
SINCE 1998

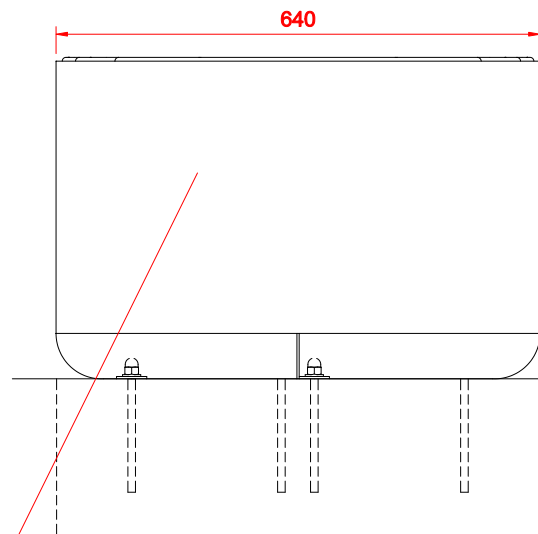


Filip Babiarz

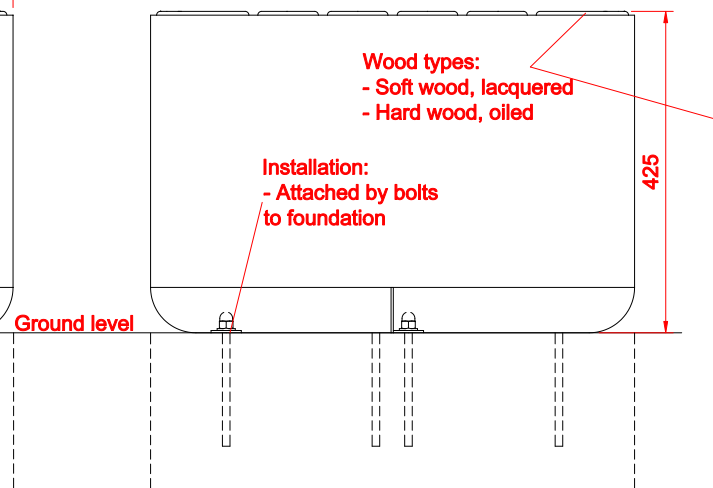
product:
bench UNIVERSE 02.455.1
version: 1
designer: Filip Babiarz

In accordance with the Polish Law on Copyright and Related Rights of 04.02.1994 (Official Journal of Laws No. 24, item 83, corrected: Journal of Laws No. 43, item 170) and in accordance with the EU copyright legislation including all EU directives and regulations on copyright, Zano Mirosław Zarotyński Company, reserves the copyright of drawings, descriptions, 3D models, renderings, graphics, content contained in offers, attachments to offers and all other documents. Its content is the intellectual property of ZANO Mirosław Zarotyński company. The use of author's ideas, solutions, copying, distribution of photos, graphics or fragments of graphics, descriptive texts, for profit, without the permission of the author - ZANO Mirosław Zarotyński company - is prohibited and constitutes a copyright infringement and is punishable.

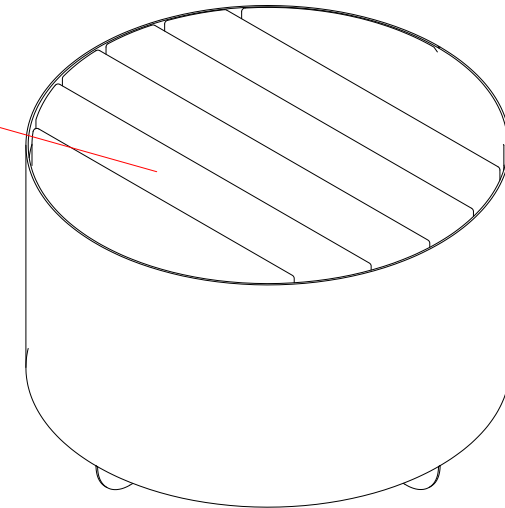
FRONT VIEW



SIDE VIEW

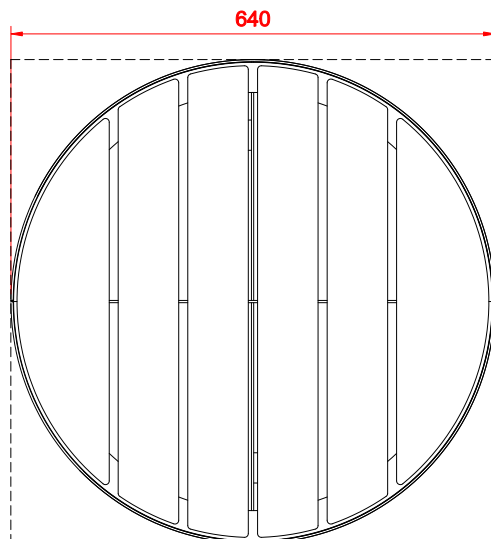


ISOMETRIC VIEW

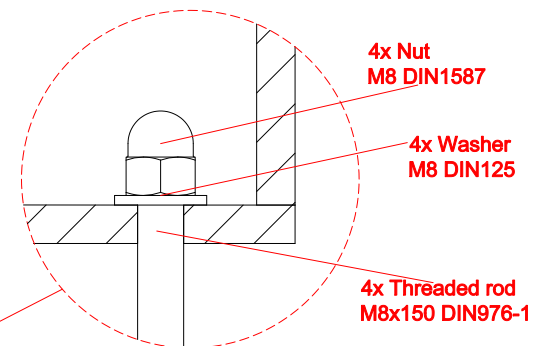
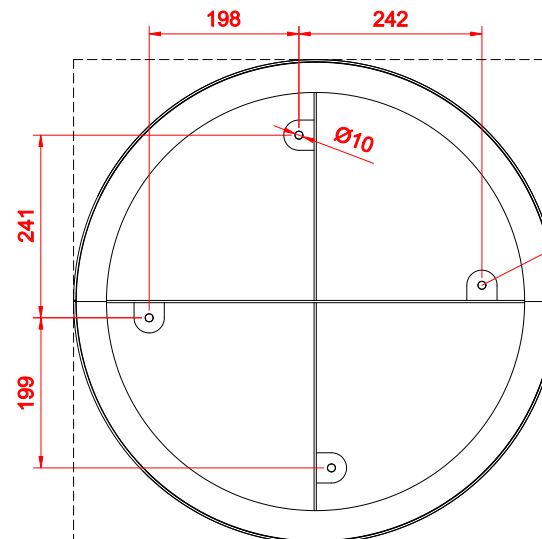


Steel types:
- Construction steel (S235JR, DC01)
galvanized and powder coated
according to RAL palette
- Stainless steel (1.4301) brushed

TOP VIEW



MOUNTING HOLES SPACING



Dimensions given in [mm]

Universe seat 02.455.1



ZANO Street Furniture
Lindegó 7A, 30-148
Cracow, Poland

phone: +48 12 200 20 53
email: office@zano.pl

In accordance with the Polish Law on Copyright and Related Rights of 04.02.1994 (Official Journal of Laws No. 24, Item 83, corrected: Journal of Laws No. 43, Item 170) and in accordance with the EU copyright legislation including all EU directives and regulations on copyright, Zano Miroslaw Zarotyński Company, reserves the copyright of drawings, descriptions, 3D models, renderings, graphics, content contained in offers, attachments to offers and all other documents. Its content is the intellectual property of ZANO Miroslaw Zarotyński company. The use of author's ideas, solutions, copying, distribution of photos, graphics or fragments of graphics, descriptive texts, for profit, without the permission of the author - ZANO Miroslaw Zarotyński company - is prohibited and constitutes a copyright infringement and is punishable.

Number:	180321-v1	
Sheet:	A4	
Scale:	1:10	
Mass:	with soft wood	30 kg
	with hard wood	34 kg