

GENERAL TECHNICAL DATA

dimensions:

- height: 16 1/8 inches
- width: 35 7/16 inches
- depth: 35 7/16 inches

- weight:**
- softwood 171 lb
 - hardwood 185 lb

- materials:**
- stainless or carbon steel
 - softwood or hardwood

DESCRIPTION

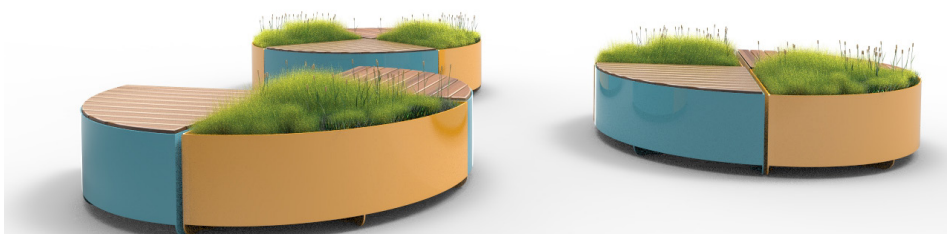
The structure is bolted from 0 1/8 mm thick bent steel sheets of ASTM A36, galvanised and powder-coated to RAL colour, or entirely from AISI 304SS ground stainless steel. The bottom of the planter has four holes for water drainage. The planter is fitted with a steel insert riveted in four parts.

All items of street furniture must be properly anchored according to the manufacturer's technical instructions. The manufacturer cannot be held responsible for damage caused by negligent use or failure to follow the instructions.



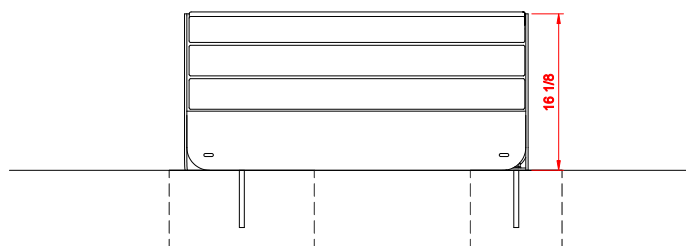
Filip Babiarz

product:
ORBIT bench 02.450.1
version: 2
designer: Filip Babiarz



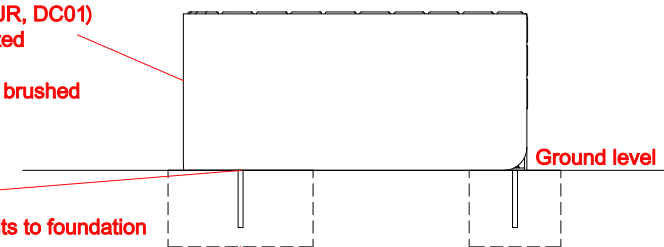
In accordance with the Polish Law on Copyright and Related Rights of 04.02.1994 (Official Journal of Laws No. 24, item 83, corrected: Journal of Laws No. 43, item 170) and in accordance with the EU copyright legislation including all EU directives and regulations on copyright, Zano Mirosław Zarotyński Company, reserves the copyright of drawings, descriptions, 3D models, renderings, graphics, content contained in offers, attachments to offers and all other documents. Its content is the intellectual property of ZANO Mirosław Zarotyński company. The use of author's ideas, solutions, copying, distribution of photos, graphics or fragments of graphics, descriptive texts, for profit, without the permission of the author - ZANO Mirosław Zarotyński company - is prohibited and constitutes a copyright infringement and is punishable.

FRONT VIEW



SIDE VIEW

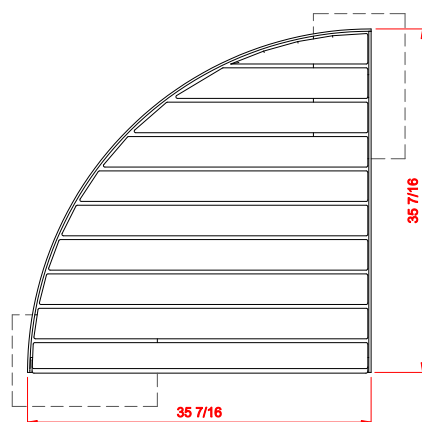
- Steel types:
- Construction steel (S235JR, DC01) galvanized and powder coated according to RAL palette
 - Stainless steel (1.4301) brushed



- Installation:
- Attached by bolts to foundation

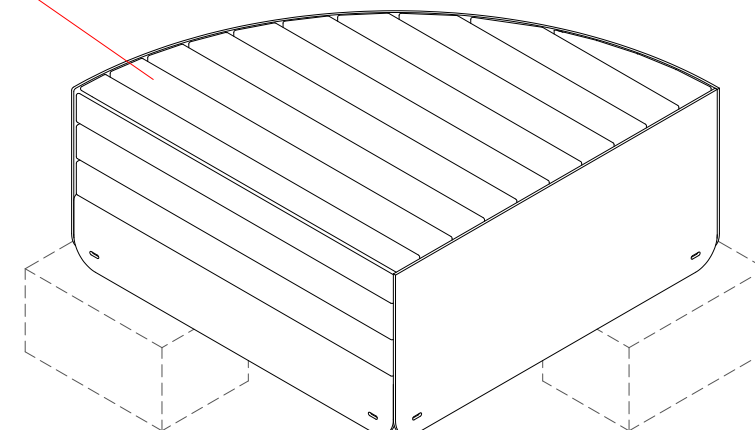
Exemplary concrete foundation

TOP VIEW

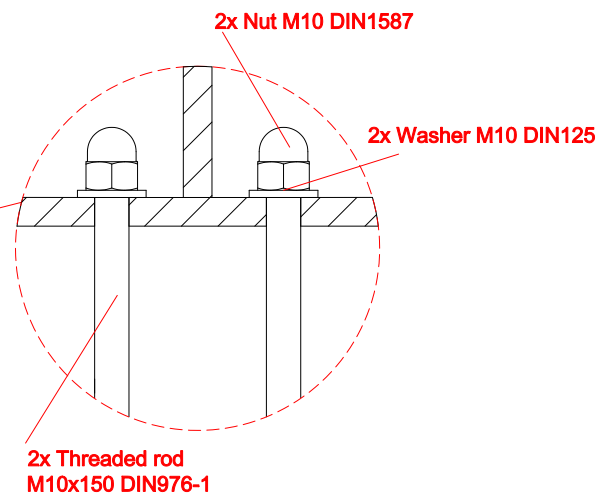
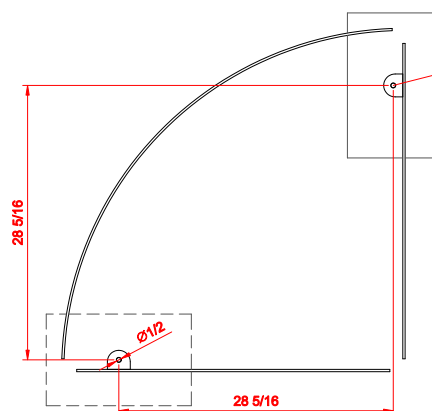


- Wood types:
- Soft wood, lacquered
 - Hard wood, oiled

ISOMETRIC VIEW



MOUNTING HOLES SPACING



Dimensions given in [inches]

Orbit Bench 02.450.1



ul. Lindego 7a,
30-148 Cracow
Poland

phone: +48 12 200 20 53
email: office@zano.pl

In accordance with the Polish Law on Copyright and Related Rights of 04.02.1994 (Official Journal of Laws No. 24, item 83, corrected: Journal of Laws No. 43, item 170) and in accordance with the EU copyright legislation including all EU directives and regulations on copyright, Zano Miroslaw Zarotyński Company reserves the copyright of drawings, descriptions, 3D models, renderings, graphics, content contained in offers, attachments to offers and all other documents. Its content is the intellectual property of ZANO Miroslaw Zarotyński company. The use of author's ideas, solutions, copying, distribution of photos, graphics or fragments of graphics, descriptive texts, for profit, without the permission of the author - ZANO Miroslaw Zarotyński company - is prohibited and constitutes a copyright infringement and is punishable.

| | | |
|---------|----------------|--------|
| Number: | 190719-v2 | |
| Sheet: | A4 | |
| Scale: | 1:20 | |
| Mass: | with soft wood | 171 lb |
| | with hard wood | 189 lb |