



### GENERAL TECHNICAL DATA:

#### dimensions:

- height: 17 13/32"
- width: 70 55/64"
- depth: 21 21/32"

#### weight:

- 45 kg

#### materials:

- powder coated cast iron according to RAL palette or stainless steel brushed
- hardwood or softwood

### DESCRIPTION:

The bent welded structure made of 1 21/32" diameter steel pipe made of carbon steel s235Jr galvanized and powder coated according to RAL palette or all stainless steel 1.4301 ground. Bench structure connected with wooden planks. Bench seat using 4 wooden planks with rectangular cross-section of 3 47/64 x 1 1/2" and length of 70 55/64". European coniferous wood impregnated and varnished twice or exotic wood impregnated and oiled twice.

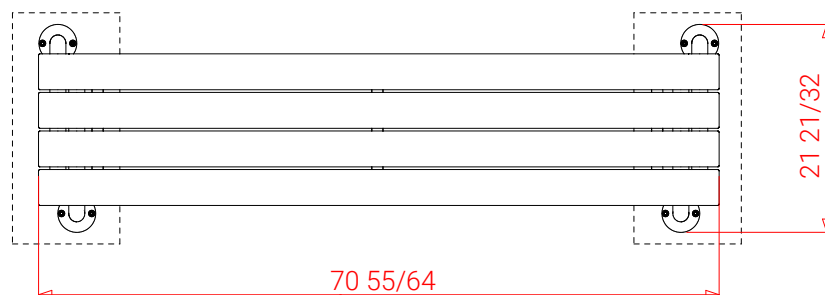
All street furniture elements must be properly anchored according to the manufacturer's technical instructions. The manufacturer is not liable for damage caused by negligent use or failure to follow instructions.



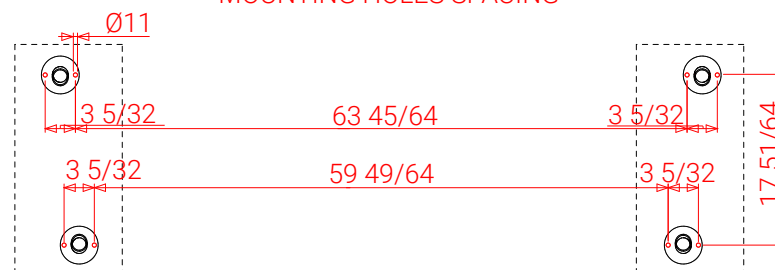
product:  
Flex bench  
02.418  
designer: T. Szpytma

In accordance with the Polish Law on Copyright and Related Rights of 04.02.1994 (Official Journal of Laws No. 24, item 83, corrected: Journal of Laws No. 43, item 170) and in accordance with the EU copyright legislation including all EU directives and regulations on copyright, Zano Mirosław Zarotynski Company, reserves the copyright of drawings, descriptions, 3D models, renderings, graphics, content contained in offers, attachments to offers and all other documents. Its content is the intellectual property of ZANO Mirosław Zarotynski company. The use of author's ideas, solutions, copying, distribution of photos, graphics or fragments of graphics, descriptive texts, for profit, without the permission of the author - ZANO Mirosław Zarotynski company - is prohibited and constitutes a copyright infringement and is punishable.

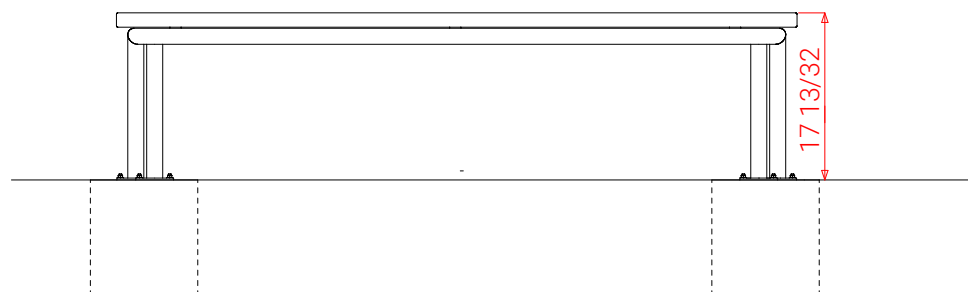
TOP VIEW



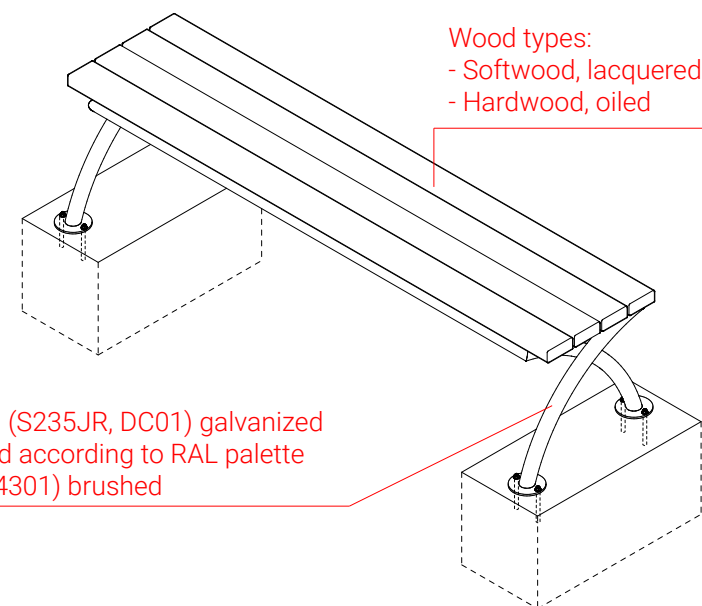
MOUNTING HOLES SPACING



FRONT VIEW



ISOMETRIC VIEW

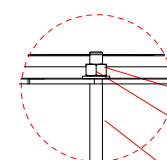
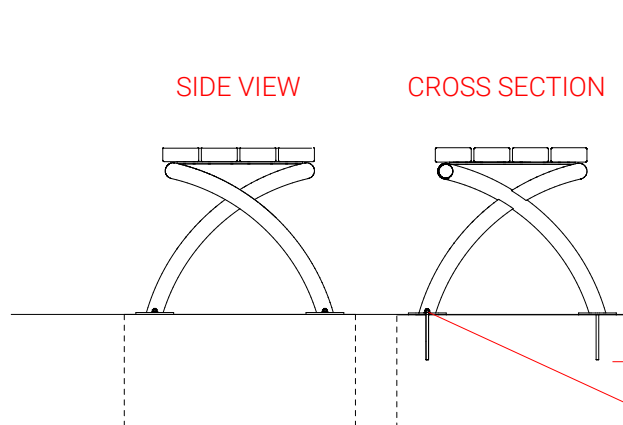


Wood types:  
 - Softwood, lacquered  
 - Hardwood, oiled

Steel types:  
 - Construction steel (S235JR, DC01) galvanized and powder coated according to RAL palette  
 - Stainless steel (1.4301) brushed

SIDE VIEW

CROSS SECTION



8x Nut M10  
 DIN1587

8x Washer  
 M10 DIN 125

8x Threaded rod  
 M10x125 DIN 976-1

Ground level

Exemplary concrete foundation

Installation:  
 Attached by bolts to foundation

Dimensions give in [inches]

Flex Bench  
 02.418

In accordance with the Polish Law on Copyright and Related Rights of 04.02.1994 (Official Journal of Laws No. 24, Item 83, corrected: Journal of Laws No. 43, Item 170) and in accordance with the EU copyright legislation including all EU directives and regulations on copyright, Zano Mirosław Zarotyński Company, reserves the copyright of drawings, descriptions, 3D models, renderings, graphics, content contained in offers, attachments to offers and all other documents. Its content is the intellectual property of ZANO Mirosław Zarotyński company. The use of author's ideas, solutions, copying, distribution of photos, graphics or fragments of graphics, descriptive texts, for profit, without the permission of the author - ZANO Mirosław Zarotyński company - is prohibited and constitutes a copyright infringement and is punishable.



ZANO Street Furniture  
 Lindego 7A, 30-148  
 Cracow, Poland

phone: +48 12 200 20 53  
 email: office@zano.pl

Number: 281022-V1

Sheet: A4

Scale: 1:20

Mass: 32 kg