



GENERAL TECHNICAL DATA

dimensions:

- height: 17 23/32"
- width: 17 23/32"
- depth: 17 23/32"

weight:

- 154 lb

materials:

- softwood, lacquered or hardwood, oiled
- stainless or construction steel

DESCRIPTION:

Bolted structure made from 5/64" and 25/64" thick bent steel sheets in carbon steel ASTM A36 galvanised and powder-coated to RAL, or entirely in stainless steel AISI 304SS polished. The pot has ten wooden planks, eight of 1 1/2" x 3 11/32" section and 16 47/64" length and two of 1 1/2" x 1 1/2" section and 16 47/64" length. One drainage hole has been created in the bottom of the pot for water drainage. It is recommended that the pot is lined with foil and, for outdoor use, the pot is insulated with polystyrene. The pot does not have a steel insert as standard.

All landscaping elements must be properly anchored according to the manufacturer's technical instructions. The manufacturer cannot be held liable for damage caused by negligent use or failure to follow the instructions.

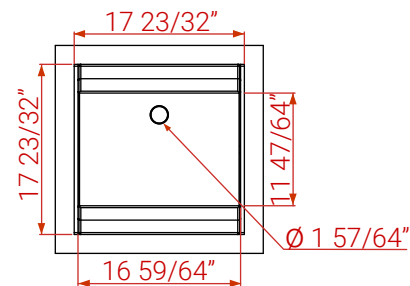


M. Wełmiński

product:
Planters Simple 06.040.S
designer: Michał
Wełmiński

In accordance with the Polish Law on Copyright and Related Rights of 04.02.1994 (Official Journal of Laws No. 24, item 83, corrected: Journal of Laws No. 43, item 170) and in accordance with the EU copyright legislation including all EU directives and regulations on copyright, Zano Miroslaw Zarotynski Company, reserves the copyright of drawings, descriptions, 3D models, renderings, graphics, content contained in offers, attachments to offers and all other documents. Its content is the intellectual property of ZANO Miroslaw Zarotynski company. The use of author's ideas, solutions, copying, distribution of photos, graphics or fragments of graphics, descriptive texts, for profit, without the permission of the author - ZANO Miroslaw Zarotynski company - is prohibited and constitutes a copyright infringement and is punishable.

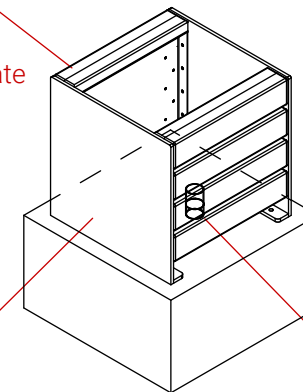
TOP VIEW



ISOMETRIC VIEW

Wood types:

- Softwood, lacquered
- Hardwood, oiled
- High pressure laminate



Drainage hole

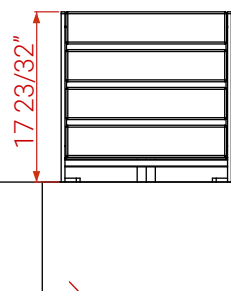
Steel types:

- Carbon steel ASTM A36 galvanized and powder coated according to RAL palette
- Stainless steel AISI 304SS brushed

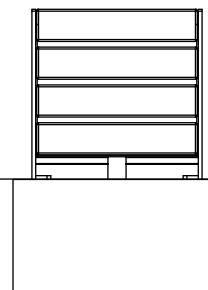
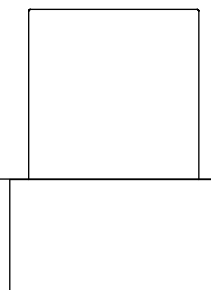
FRONT VIEW

BACK VIEW

SIDE VIEW



Exemplary concrete foundation



Ground level

Dimensions given in [in]

Donica Simple 06.040.S

In accordance with the Polish Law on Copyright and Related Rights of 04.02.1994 (Official Journal of Laws No. 24, item 83, corrected: Journal of Laws No. 43, item 170) and in accordance with the EU copyright legislation including all EU directives and regulations on copyright, Zano Miroslaw Zarotyfeld Company, reserves the copyright of drawings, descriptions, 3D models, renderings, graphics, content contained in offers, attachments to offers and all other documents. Its content is the intellectual property of ZANO Miroslaw Zarotyfeld company. The use of author's ideas, solutions, copying, distribution of photos, graphics or fragments of graphics, descriptive texts, for profit, without the permission of the author - ZANO Miroslaw Zarotyfeld company - is prohibited and constitutes a copyright infringement and is punishable.



ZANO Street Furniture
Lindego 7A, 30-148
Cracow, Poland

phone: +48 12 200 20 63
email: office@zano.pl

Number: 020822-V1

Sheet: A4

Scale: 1:20

Weight: 154 lb