

## GENERAL TECHNICAL DATA

### dimensions:

- height: 18 1/8 inches
- width: 19 11/16 inches
- depth: 21 3/8 inches

- weight:**
- with softwood 68 lb
  - with hardwood 83 lb

- materials:**
- stainless or carbon steel
  - softwood or hardwood

## DESCRIPTION

Welded construction combined with wooden planks. Welded construction of steel sheets, 0<sup>25</sup>/<sub>64</sub>" and 0<sup>5</sup>/<sub>32</sub>" thick, made of carbon steel ASTM A36 galvanized and powder coated in accordance with RAL palette, or entirely of stainless steel AISI 304SS polished.

The seat and back of the bench are made of wooden planks with a rectangular cross-section measuring 1<sup>1</sup>/<sub>2</sub>" x 1<sup>1</sup>/<sub>2</sub>". The bench has 24 planks with a length of 19<sup>11</sup>/<sub>16</sub>". Softwood impregnated and varnished twice or hardwood impregnated and oiled twice.

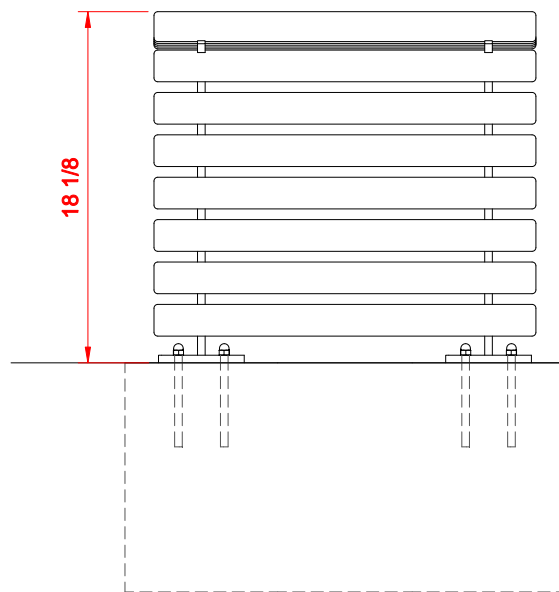
All items of street furniture must be properly anchored according to the manufacturer's technical instructions. The manufacturer is not liable for damage caused by negligent use or failure to follow instructions.



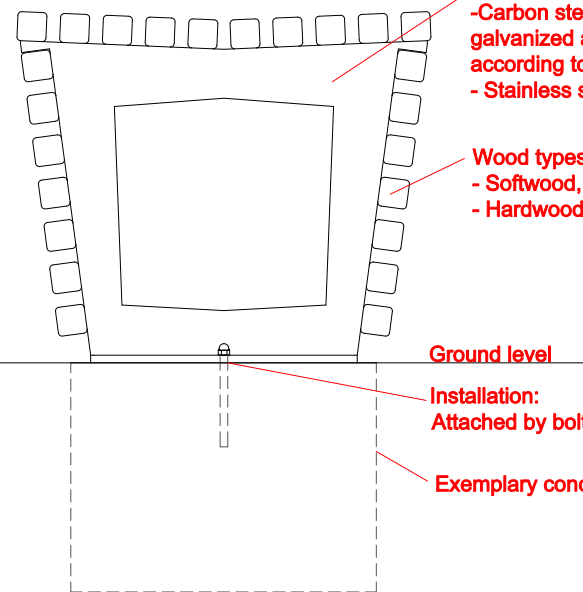
product: FLASH seat 02.825.1  
version: 1

In accordance with the Polish Law on Copyright and Related Rights of 04.02.1994 (Official Journal of Laws No. 24, item 83, corrected: Journal of Laws No. 43, item 170) and in accordance with the EU copyright legislation including all EU directives and regulations on copyright, Zano Miroslaw Zarotynski Company, reserves the copyright of drawings, descriptions, 3D models, renderings, graphics, content contained in offers, attachments to offers and all other documents. Its content is the intellectual property of ZANO Miroslaw Zarotynski company. The use of author's ideas, solutions, copying, distribution of photos, graphics or fragments of graphics, descriptive texts, for profit, without the permission of the author - ZANO Miroslaw Zarotynski company - is prohibited and constitutes a copyright infringement and is punishable.

FRONT VIEW



SIDE VIEW



Steel types:  
 - Carbon steel ASTM A36  
 galvanized and powder coated  
 according to RAL palette  
 - Stainless steel AISI 304SS brushed

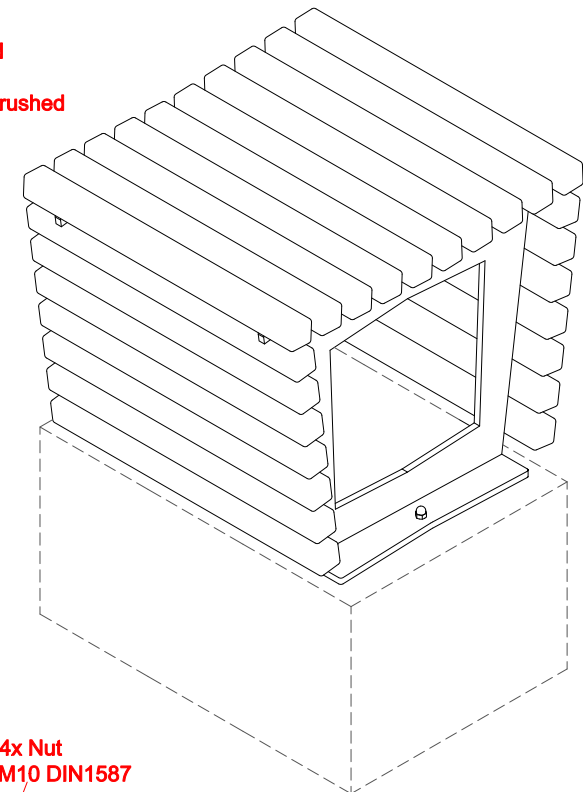
Wood types:  
 - Softwood, lacquered  
 - Hardwood, oiled

Ground level

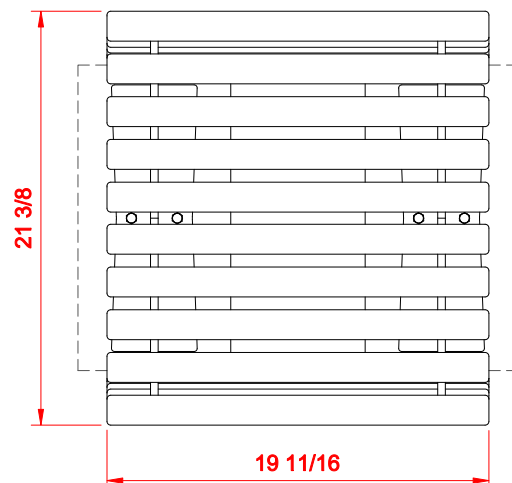
Installation:  
 Attached by bolts to foundation

Exemplary concrete foundation

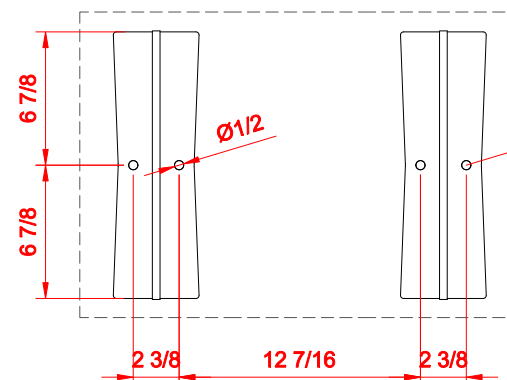
ISOMETRIC VIEW



TOP VIEW



MOUNTING HOLES SPACING



4x Nut  
 M10 DIN1587

4x Washer  
 M10 DIN125

4x Threaded rod  
 M10x150 DIN976-1

Dimensions given in [inches]

## Flash Seat 02.825.1

In accordance with the Polish Law on Copyright and Related Rights of 04.02.1984 (Official Journal of Laws No. 24, Item 83, corrected: Journal of Laws No. 43, Item 170) and in accordance with the EU copyright legislation including all EU directives and regulations on copyright, Zano Mirosław Zarzyński Company, reserves the copyright of drawings, descriptions, 3D models, renderings, graphics, content contained in offers, attachments to offers and all other documents. Its content is the intellectual property of ZANO Mirosław Zarzyński company. The use of author's ideas, solutions, copying, distribution of photos, graphics or fragments of graphics, descriptive texts, for profit, without the permission of the author - ZANO Mirosław Zarzyński company - is prohibited and constitutes a copyright infringement and is punishable.



ZANO Street Furniture  
 Lindego 7A, 30-148  
 Cracow, Poland  
 phone: +48 12 200 20 53  
 email: office@zano.pl

Number: 280918-v1

Sheet: A4

Scale: 1:10

Mass:	with soft wood	68 lb
	with hard wood	83 lb