

GENERAL TECHNICAL DATA

dimensions:

- height: 55 cm
- width: 40 cm
- depth: 40 cm

weight:

- 20 kg

materials:

- stainless or carbon steel

DESCRIPTION:

Riveted structure made of bent steel sheets, 2 mm thick of carbon steel s235Jr galvanized and powder coated according to RAL palette RAL or entirely of stainless steel 1.4301 ground. The flower pot has four wooden planks with a section of 40 mm x 30 mm and a length of 544 mm. One drainage hole has been created in the bottom of the pot for drainage of water. It is recommended to pad the pot with foil and, in the case of outdoor use insulating the pot with styrofoam. As standard the pot does not have a steel insert.

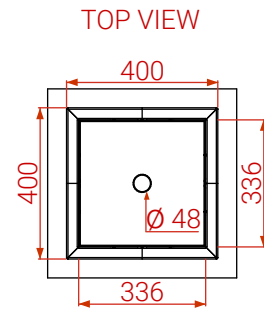
All landscaping elements must be properly anchored in accordance with the manufacturer's technical instructions manufacturer's technical instructions. The manufacturer is not responsible responsible for damage caused by careless use or failure to follow instructions instructions.



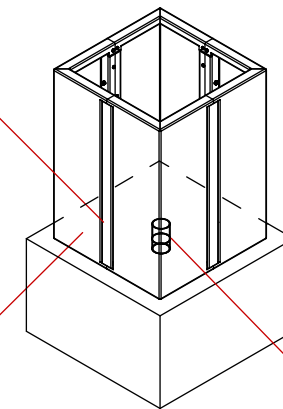
M. Wełmiński

product:
Planters Agawa
06.020.1.S
designer: Michał
Wełmiński

In accordance with the Polish Law on Copyright and Related Rights of 04.02.1994 (Official Journal of Laws No. 24, item 83, corrected: Journal of Laws No. 43, item 170) and in accordance with the EU copyright legislation including all EU directives and regulations on copyright, Zano Miroslaw Zarotynski Company, reserves the copyright of drawings, descriptions, 3D models, renderings, graphics, content contained in offers, attachments to offers and all other documents. Its content is the intellectual property of ZANO Miroslaw Zarotynski company. The use of author's ideas, solutions, copying, distribution of photos, graphics or fragments of graphics, descriptive texts, for profit, without the permission of the author - ZANO Miroslaw Zarotynski company - is prohibited and constitutes a copyright infringement and is punishable.



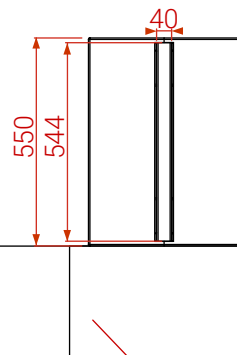
ISOMETRIC VIEW



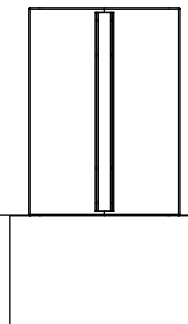
Wood types:
 - Softwood, lacquered
 - Hardwood, oiled

Drainage hole

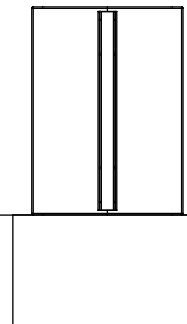
FRONT VIEW



BACK VIEW



SIDE VIEW



Steel types:
 - Construction steel (S235JR, DC01) galvanized and powder coated according to RAL palette
 - Stainless steel (1.4301) brushed

Ground level

Exemplary concrete foundation

Dimensions given in [mm]

Planters Agawa 06.020.1.S

In accordance with the Polish Law on Copyright and Related Rights of 04.02.1994 (Official Journal of Laws No. 24, item 83, corrected: Journal of Laws No. 43, item 170) and in accordance with the EU copyright legislation including all EU directives and regulations on copyright, Zano Miroslaw Zarotynski Company, reserves the copyright of drawings, descriptions, 3D models, renderings, graphics, content contained in offers, attachments to offers and all other documents. Its content is the intellectual property of ZANO Miroslaw Zarotynski company. The use of author's ideas, solutions, copying, distribution of photos, graphics or fragments of graphics, descriptive texts, for profit, without the permission of the author - ZANO Miroslaw Zarotynski company - is prohibited and constitutes a copyright infringement and is punishable.



ZANO Street Furniture
 Lindego 7A, 30-148
 Cracow, Poland

phone: +48 12 200 20 53
 email: office@zano.pl

Number: 260722-V1

Sheet: A4

Scale: 1:20

Weight: 20 kg

