

GENERAL TECHNICAL DATA

dimensions:

- height: 17 13/16 inches
- width: 19 1/16 inches
- depth: 19 11/16 inches

- weight:**
- with softwood 41 lb
 - with hardwood 59 lb

- materials:**
- stainless or carbon steel
 - softwood or hardwood

- capacity:** - 15,58 US gallon

DESCRIPTION

Welded structure made of steel sheets, joined with planks. The structure is bent, 0 5/64" thick, from carbon steel ASTM A36 galvanized and powder-coated to RAL colour, or entirely from stainless steel AISI 304SS ground. There is a drainage hole in the bottom of the pot for draining excess water. The flower pot does not have a steel insert.

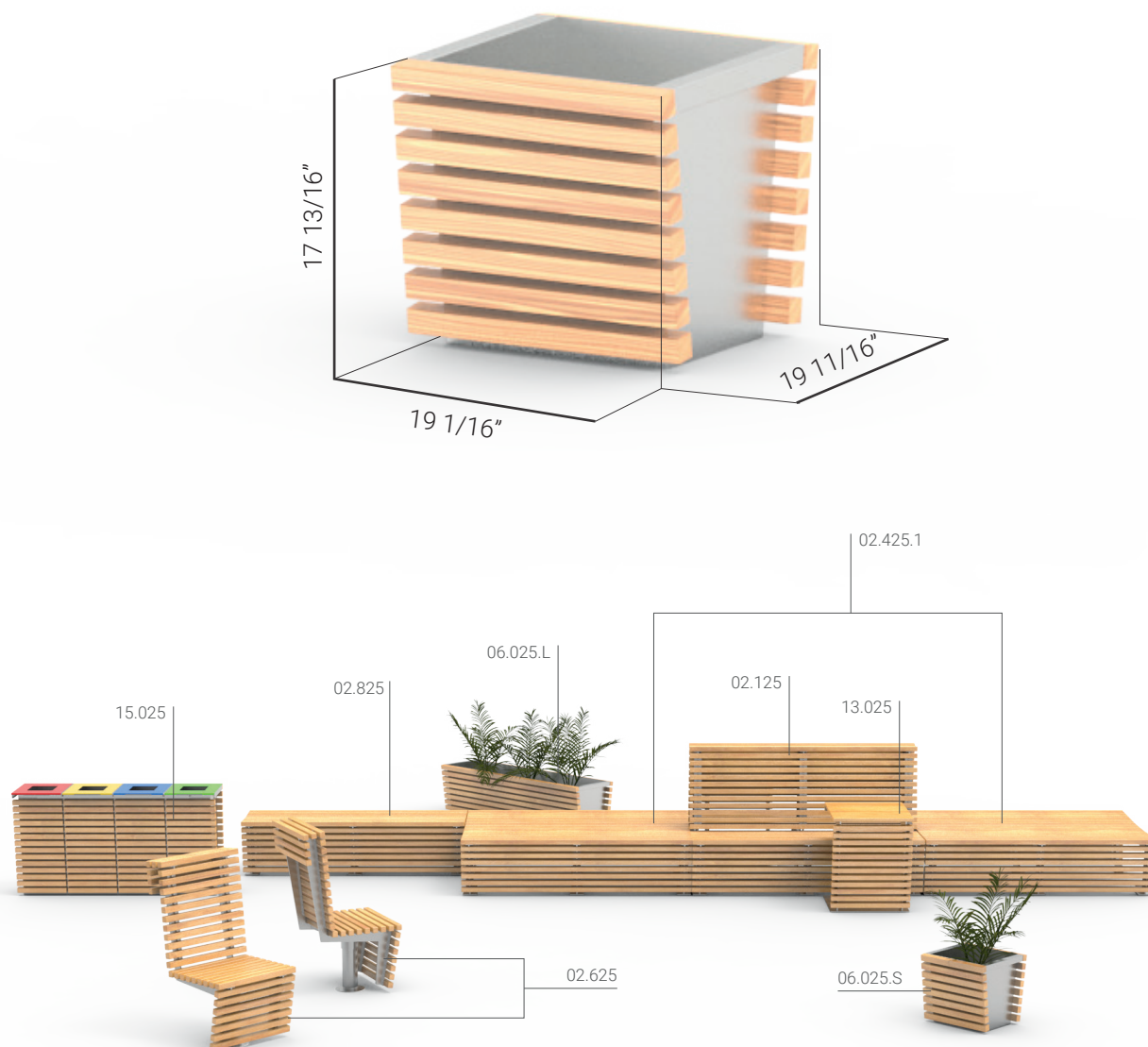
Wooden planks of rectangular cross-section, 1 1/2" x 1 1/2". The bench has 16 planks with a length of 19 11/16". Softwood impregnated and varnished twice or hardwood impregnated and oiled twice.

All items of street furniture must be properly anchored according to the manufacturer's technical instructions. The manufacturer is not liable for damage caused by negligent use or failure to follow instructions.

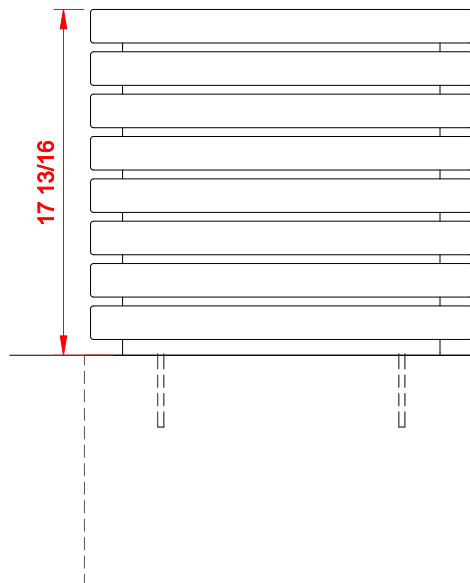


product:
FLASH planter 06.025.S
version: 1
designer: Mateusz Welmiński

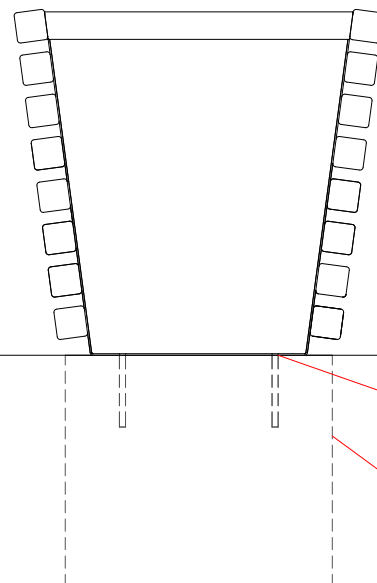
In accordance with the Polish Law on Copyright and Related Rights of 04.02.1994 (Official Journal of Laws No. 24, item 83, corrected: Journal of Laws No. 43, item 170) and in accordance with the EU copyright legislation including all EU directives and regulations on copyright, Zano Mirosław Zarotyński Company, reserves the copyright of drawings, descriptions, 3D models, renderings, graphics, content contained in offers, attachments to offers and all other documents. Its content is the intellectual property of ZANO Mirosław Zarotyński company. The use of author's ideas, solutions, copying, distribution of photos, graphics or fragments of graphics, descriptive texts, for profit, without the permission of the author - ZANO Mirosław Zarotyński company - is prohibited and constitutes a copyright infringement and is punishable.



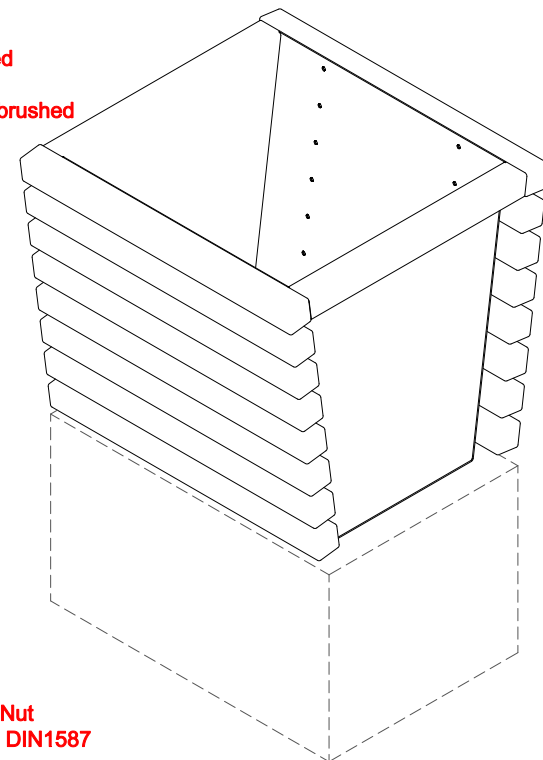
FRONT VIEW



SIDE VIEW



ISOMETRIC VIEW



Steel types:
 - Carbon steel ASTM A36
 galvanized and powder coated
 according to RAL palette
 - Stainless steel AISI 304SS brushed

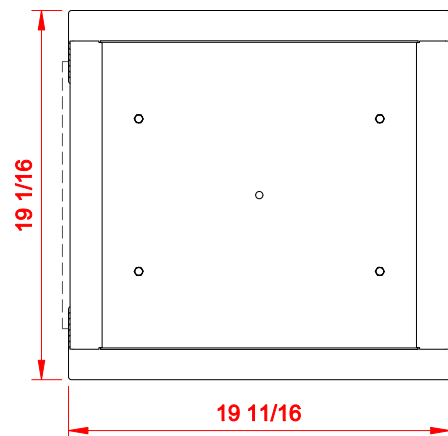
Wood types:
 - Softwood, lacquered
 - Hardwood, oiled

Ground level

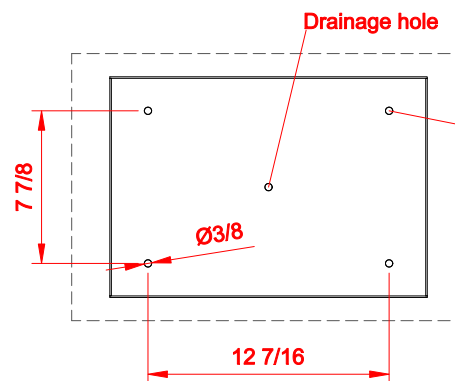
Installation:
 Attached by bolts to foundation

Exemplary concrete foundation

TOP VIEW



MOUNTING HOLES SPACING



4x Nut
 M8 DIN1587

4x Washer
 M8 DIN125

4x Threaded rod
 M8x150 DIN976-1

Dimensions given in [inches]

Flash Planter 06.025.S

In accordance with the Polish Law on Copyright and Related Rights of 04.02.1994 (Official Journal of Laws No. 24, Item 83, corrected: Journal of Laws No. 43, Item 170) and in accordance with the EU copyright legislation including all EU directives and regulations on copyright, Zano Miroslaw Zarotyński Company, reserves the copyright of drawings, descriptions, 3D models, renderings, graphics, content contained in offers, attachments to offers and all other documents. Its content is the intellectual property of ZANO Miroslaw Zarotyński company. The use of author's ideas, solutions, copying, distribution of photos, graphics or fragments of graphics, descriptive texts, for profit, without the permission of the author - ZANO Miroslaw Zarotyński company - is prohibited and constitutes a copyright infringement and is punishable.



ZANO Street Furniture
 Lindego 7A, 30-148
 Cracow, Poland
 phone: +48 12 200 20 53
 email: office@zano.pl

Number:	091112-v1	
Sheet:	A4	
Scale:	1:10	
Mass:	with soft wood	41 lb
	with hard wood	59 lb