

## GENERAL TECHNICAL DATA

### dimensions:

- height: 55 cm
- width: 40 cm
- depth: 40 cm

### weight:

- 20 kg

### materials:

- stainless or carbon steel

## DESCRIPTION:

Riveted structure made of bent steel sheets, 2 mm thick of carbon steel s235Jr galvanized and powder coated according to RAL palette RAL or entirely of stainless steel 1.4301 ground. One drainage hole has been created in the bottom of the pot for drainage of water. It is recommended to pad the pot with foil and, in the case of outdoor use insulating the pot with styrofoam. As standard the pot does not have a steel insert.

All landscaping elements must be properly anchored in accordance with the manufacturer's technical instructions. The manufacturer is not responsible for damage caused by careless use or failure to follow instructions.

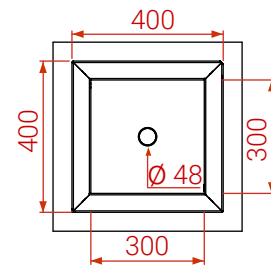


*M. Welmiński*

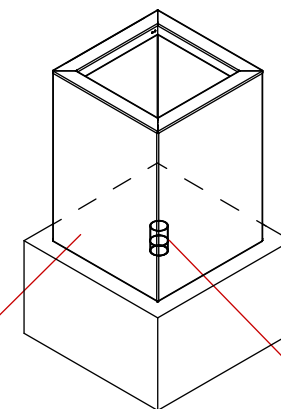
product:  
Planters Agawa  
06.020.2.S  
designer: Michał  
Welmiński

In accordance with the Polish Law on Copyright and Related Rights of 04.02.1994 (Official Journal of Laws No. 24, item 83, corrected: Journal of Laws No. 43, item 170) and in accordance with the EU copyright legislation including all EU directives and regulations on copyright, Zano Mirosław Zarotyński Company, reserves the copyright of drawings, descriptions, 3D models, renderings, graphics, content contained in offers, attachments to offers and all other documents. Its content is the intellectual property of ZANO Mirosław Zarotyński company. The use of author's ideas, solutions, copying, distribution of photos, graphics or fragments of graphics, descriptive texts, for profit, without the permission of the author - ZANO Mirosław Zarotyński company - is prohibited and constitutes a copyright infringement and is punishable.

TOP VIEW

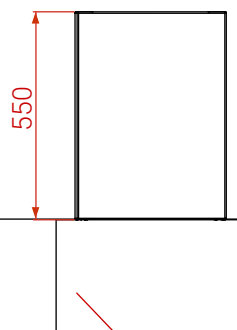


ISOMETRIC VIEW



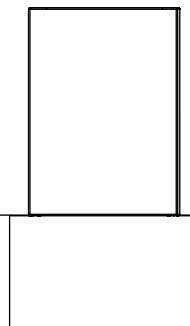
Drainage hole

FRONT VIEW

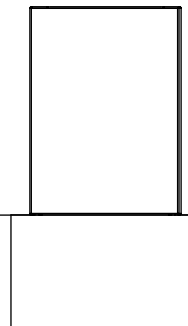


Exemplary concrete foundation

BACK VIEW



SIDE VIEW



Steel types:

- Construction steel (S235JR, DC01) galvanized and powder coated according to RAL palette
- Stainless steel (1.4301) brushed

Ground level

Dimensions given in [mm]

Planters Agawa 06.020.2.S

In accordance with the Polish Law on Copyright and Related Rights of 04.02.1994 (Official Journal of Laws No. 24, item 83, corrected: Journal of Laws No. 43, item 170) and in accordance with the EU copyright legislation including all EU directives and regulations on copyright, Zano Miroslaw Zarotyfeld Company, reserves the copyright of drawings, descriptions, 3D models, renderings, graphics, content contained in offers, attachments to offers and all other documents. Its content is the intellectual property of ZANO Miroslaw Zarotyfeld company. The use of author's ideas, solutions, copying, distribution of photos, graphics or fragments of graphics, descriptive texts, for profit, without the permission of the author - ZANO Miroslaw Zarotyfeld company - is prohibited and constitutes a copyright infringement and is punishable.



ZANO Street Furniture  
Lindego 7A, 30-148  
Cracow, Poland

phone: +48 12 200 20 53  
email: office@zano.pl

Number: 280722-V1

Sheet: A4

Scale: 1:20

Weight: 20 kg

